



Merrydowns

14th Annual ON FARM RAM SALE

ON FARM
OPEN DAY
22 November
1-4pm

213 Rams Offered: 90 Southdowns/123 Romneys

Tuesday 29 November 2022

Vendors: Blair & Sally Robertson,
348 Koi Rd
RD1 Gore
Ph 03 207 6851 or 027 4444085

Inspection from 10am - Sale starts 1pm



Welcome

Welcome to “Merrydowns” 14th annual on farm ram sale. With the ever increasing number of sheep breeds available in the current market we think it is important that the commercial farmer has the option to be able to purchase **pure bred Romney and Southdown rams** – an option which “Merrydowns” provides. We continue to focus on all of the commercial traits, carcass confirmation, quality, fertility, lambing ease and quality wool. This year we again side sampled the Romney Sale Rams to test their wool for micron, this year the average micron is 36.6, curvature average is 54.7 which has significantly improved from last year and comfort factor average is 19.1. The explanations for each can be found in the catalogue after the introduction.

Our Romney and Southdown Studs continue to be SIL recorded; these are used as a culling tool only, our linkages with other breeders are minimal. We are solely focussed on producing sheep with the commercial traits of; lambing percent to the ram, ensuring that the ewes have the capacity to hold and rear their lambs, top quality wool and weights, longevity, structural soundness,

constitution, growth rate, early maturity, actual fertility and quality first.

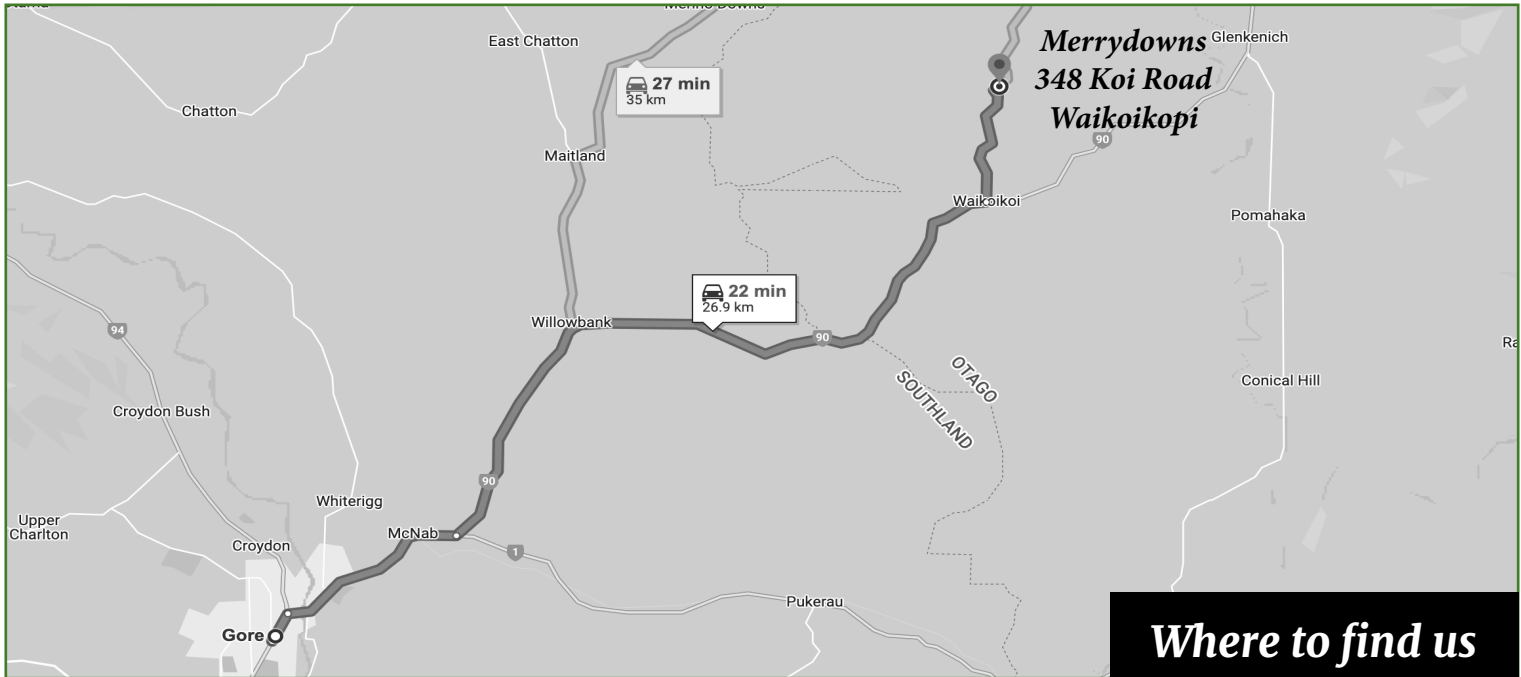
We eye muscle scanned 174 Southdown ram hoggets on the 5 April 2022 (the average birth date was 15 September 2021); the average live weight was 57.4 kg’s, they averaged 19.3 EMA with a top EMA scan of 24.5. The Romney ram lambs were shorn on the 10 February and then again on the 7 August 2022.

Please note the conditions of sale under ram transfers – it now reads as follows; Romney and Southdown rams purchased for breeding operations – registered or unregistered - will be a minimum of \$3,000.

We look forward to seeing you on the 29 November 2022.

Kind Regards

Blair, Sally, Jess, Jack and Stella Robertson



Where to find us

Definition of Wool Fibre Characteristics

Mean Fibre Diameter (MFD)

The Wool Industry has chosen to define Fibre Diameter in terms of the average thickness or width of all the fibres that are measured. This is measured in Microns (μ). One micron is 1/1000th of a metre.

Comfort Factor (CF)

The ability to wear wool fibres next to skin has been associated with fibre diameter. It is the ends of the fibres which protrude from the yarn which irritate the nerve endings in the skin. Researchers have established that once the % of fibres coarser than 30μ exceeds 5% the fabric will become prickly to wear. The comfort factor is the % of fibres $<30\mu$. So, in order to wear next to skin we need to have 95% of fibres $\leq 30\mu$. A comfort factor of 95%+ can be achieved by either having a finer micron or a lower CVD.

Fibre Curvature

The crimp of wool fibres has an impact on efficiency in top making and spinning, yarn properties and the structural and tactile properties of fabrics. This characteristic is of considerably less direct importance in processing and product performance than

fibre fineness or fibre length. However, if its impact can be reliably predicted, this may well provide opportunities for improving the quality of yarns and fabrics and for reducing production costs. High curvature fibres generally have a better ability to fill space and therefore are described as bulky and can provide more warmth with less weight. Fibre curvature is related to crimp and therefore the measurement of fibre curvature of raw wool provides an alternative to measuring fibre crimp. Defining fibre curvature is even more complex than defining fibre fineness. This is because curvature exists in 3 dimensions (see Figure 5). Even though fibres curve in 3 dimensions the measurement of Fibre curvature is in made in two dimensions. In practice we measure the angle of intersection of two lines at right angle to the fibre and 1 mm apart. The unit of this measure is degrees/mm. Curvature decreases as the arc approaches a straight line. So a highly crimped (curved) fibre will have a high degree of curvature, and a straight fibre will have a low degree of curvature.



NZWTA

Conditions of Sale

- Stud Ram Transfers:** Romney and Southdown purchased for breeding operations, registered or unregistered will be a minimum of \$3000.
- Buyers Registration:** A buyers number system will operate at the sale. Therefore it will be necessary for all prospective purchasers to register prior to the commencement of sale.
- Conditions:** This sale will be conducted under the usual conditions as set down by the New Zealand Stock and Station agents. A copy of which will be posted in the office.
- GST:** All lots are sold exclusive of GST.
- Disclaimer:** While all care and responsibility has been taken by the vendors and PGG Wrightson's no responsibility can be taken for any errors or omissions.
- Insurance:** All care will be taken with the sheep awaiting delivery but they become the responsibility of the purchaser at the fall of the hammer. Therefore insurance is strongly advised and representatives will be in attendance.
- Health and Safety Regulations:** Visitors are reminded of health and safety regulations. They are requested to take all care and responsibility for all actions whilst on the property.
- Rebate:** A 6% rebate is offered by PGG Wrightson's to all approved non participating companies who must register intending buyers at least 24 hours prior to sale.
- Selling order:** The vendor reserves the right to; alter the order, replace or withdraw lots.

Lots Index

Romney Rams

Lots 1- 33

Lots 64 - 93

Lots 124 - 153

Lots 184 - 213

Southdown Rams

Lots 34 - 63

Lots 94 - 123

Lots 154 - 183

Prefix Abbreviations

AU..... Aurora
BL..... Banklea
BRF..... Brookfield
CD Clifton Downs
CHA Chandpara
GP Gatton Park
EB Edenbank
FAR..... Farview
GP Gatton Park
GH Glenhope
HE..... Hermiston
HCT..... Hillcroft
HF..... Holly Farm
HUN..... Huruniu
KT Kiwitahi
KD Kirkdale
KTI Kikitangeo
MA..... Mana
MAC..... Maclaka
MAK..... Mangakura

MAP Mapua
MD Merrydowns
MV..... Merryvale
MTA Mt Annan
ND Nedelle Downs
OF..... Offord
ORR..... Okaruru
OMI..... Omihi
RW Rawahi
RK Ruakiwi
SP Southern Pastures
STP Stormy Point
TEU Te Ohu
TOT Totaranui
TRD..... Tralee
TU..... Turanganui
W Waio
WD Waidale
WIM..... Waimai
WLH..... Willowhaugh

Say hello to
your local
AonAgri
broker today.

AonAgri brokers have worked with farms, buyers, and industry members across New Zealand for a number of years. Our dedicated brokers are real humans who live locally in your community and value the importance of making sure your Ram is properly covered.

Say hello to your local AonAgri team today and find the right cover for your farm.

03 208 8800 aon.co.nz

AONAgri



SIRE	MERRYDOWNS SD 176/16 TW
-------------	-------------------------

NZM- W+M+W	RANK	Number of Progeny
1460	1	432

Sire of Sire:
MAC 14/13 TW

Sire of Dam:
MD 208/08 TW

Sire:
4/15 TW

Dam:
MD 451/10 TW

Dam of Sire:
MD 706/13 TW

Dam of Dam:
MD 39/03 TW

Comment: Thick grunty sound ram. 2 sons retained.

SIRE	MERRYDOWNS SD 858/17 TW
-------------	-------------------------

NZM- W+M+W	RANK	Number of Progeny
1099	4	210

Sire of Sire:
MD 435/10 TR

Sire of Dam:
MAC 14/13 TW

Sire:
338/15 TW

Dam:
MD 297/15 TW

Dam of Sire:
MD 550/10 TW

Dam of Dam:
MD 216/13

Comment: Well balanced, great carcasse and sound. Supreme champion Wanaka. 1 Son retained.

SIRE	KIRKDALE SD 36/18 TW	
-------------	----------------------	--

NZM- W+M+W	RANK	Number of Progeny
576	11	511

Sire of Sire:
ND 02/11

Sire of Dam:
KD 300/08

Sire:
ND216/14

Dam:
KD 226/11

Dam of Sire:
ND 141/09

Dam of Dam:
KD 03/05

Comment: Imported from Tasmania. Extremely sound with longevity. 3 sons retained.

SIRE	MERRYDOWNS SD 395/18 TR	
-------------	-------------------------	--

NZM- W+M+W	RANK	Number of Progeny
1282	3	207

Sire of Sire:
MD 4/2015 TW

Sire of Dam:
MD 287/09 TW

Sire:
176/16 TW

Dam:
MD 465/11 TW

Dam of Sire:
MD 451/10 TW

Dam of Dam:
MD 541/05 TW

Comment: Extremely well bred, exceptional figures.

SIRE	TRALEE SD 9/19 TR	
-------------	-------------------	--

NZM- W+M+W	RANK	Number of Progeny
550	12	181

Sire of Sire:
WLH 127/14 TW

Sire of Dam:
CD 250/11

Sire:
462/16 TW

Dam:
TR 125/15

Dam of Sire:
CD 346/14

Dam of Dam:
TR 202/11

Comment: Purchased for \$6000. Breeding well.

SIRE	MERRYDOWNS SD 67/19 TW	
-------------	------------------------	--

NZM- W+M+W	RANK	Number of Progeny
739	9	200

Sire of Sire:
TR 74/14 TW

Sire of Dam:
MD 338/15 TW

Sire:
760/17 TW

Dam:
MD 830/17 TW

Dam of Sire:
WD 752/13

Dam of Dam:
MD 238/13 TR

Comment: Thick, grunty very high quality.

SIRE	MERRYDOWNS SD 191/19 TW
-------------	-------------------------

NZM- W+M+W	RANK	Number of Progeny
901	6	74

Sire of Sire:
MD 338/15 TW

Sire of Dam:
MD 228/15 TW

Sire:
858/17

Dam:
MD 675/16

Dam of Sire:
MD 297/15 TW

Dam of Dam:
MD 815/13 TW

Comment: Extremely good carcasse and structural soundness. 1 exceptional keeper retained.

SIRE	MERRYDOWNS SD 281/19 TW
-------------	-------------------------

NZM- W+M+W	RANK	Number of Progeny
899	7	115

Sire of Sire:
MD 435/10 TR

Sire of Dam:
MD 187/15

Sire:
K7/16

Dam:
MD 533/16 TR

Dam of Sire:
HF 115/12

Dam of Dam:
MD 377/13 TR

Comment: Clean shoulders, and high quality.

SIRE	MERRYDOWNS SD 643/19 TW
-------------	-------------------------

NZM- W+M+W	RANK	Number of Progeny
729	10	59

Sire of Sire:
MD 4/15 TW

Sire of Dam:
MD 435/10 TR

Sire:
176/16 TW

Dam:
MD 778/16

Dam of Sire:
MD 451/10 TW

Dam of Dam:
MD 94/14 TW

Comment: Thick grunty and sound, high quality.

SIRE	MERRYDOWNS SD 714/19 TW
-------------	-------------------------

NZM- W+M+W	RANK	Number of Progeny
978	5	138

Sire of Sire:
MD 4/15 TW

Sire of Dam:
MD 435/10 TR

Sire:
618/16 TW

Dam:
MD 216/16 TW

Dam of Sire:
MD 404/12 TR

Dam of Dam:
MD 170/13 TW

Comment: All breeds champion Gore. Unfortunately lost fighting.

SIRE

MERRYDOWNS SD 1100/19 TW

NZM-
W+M+W

RANK

Number of Progeny

1403

2

205

Sire of Sire:

MD 435/10 TR

Sire of Dam:

MAC 14/13 TW

Sire:

K7/16

Dam:

MD 80/16 TW

Dam of Sire:

HF 115/12

Dam of Dam:

MD 190/14 TR

Comment: Exceptional ram, breeding well.

SIRE	HILLCROFT 38/15 TW	
-------------	--------------------	--

NZM- W+M+W	RANK	Number of Progeny
2776	2	17

Sire of Sire:
WT 523/09

Sire of Dam:
HCT 73/12

Sire:
WIM347/12 TW

Dam:
HCT 104/13 TW

Dam of Sire:
WIM 96/10

Dam of Dam:
HCT 53/10 TW

Comment: Facial eczema tested at 0.5. 1 son retained.

SIRE	WAIMAI 1166/15	
-------------	----------------	--

NZM- W+M+W	RANK	Number of Progeny
2969	1	720

Sire of Sire:
WIM 106/10 TW

Sire of Dam:
WIM 17/08 TW

Sire:
WIM289/13 TW

Dam:
WIM 850/13 TW 111

Dam of Sire:
WIM 795/06 TW 2332322

Dam of Dam:
WIM 728/10 22

Comment: Facial eczema tested at 0.6. Top breeding ram. 1 son retained.

SIRE	MERRYDOWNS 1624/17 TW
-------------	-----------------------

NZM- W+M+W	RANK	Number of Progeny
1873	7	328

SIRE	MERRYDOWNS 1014/18 TW
-------------	-----------------------

NZM- W+M+W	RANK	Number of Progeny
1337	13	110

Sire of Sire:
MD 2204/12 TW

Sire of Dam:
RK 591/09 TW

Sire of Sire:
FAR 98/14 TW

Sire of Dam:
MD 1433/11 TW

Sire:
MD1439/15 TW

Dam:
MD 2643/13 TW 223

Sire:
FAR40/16 TW

Dam:
MD 1652/13 TW 2122

Dam of Sire:
MD 1852/12 TW 2221

Dam of Dam:
TOT 171/10 2223

Dam of Sire:
FAR 128/14 TW 22

Dam of Dam:
MD 1609/11 TW 222

Comment: Thick well balanced, good quality, 3 sons retained.

Comment: Moderate framed, quality,sound.

SIRE	MERRYDOWNS 1065/18 TW
-------------	-----------------------

NZM- W+M+W	RANK	Number of Progeny
1271	14	212

SIRE	MERRYDOWNS 1149/18 TW
-------------	-----------------------

NZM- W+M+W	RANK	Number of Progeny
1703	10	87

Sire of Sire:
FAR 98/14 TW

Sire of Dam:
W 442/13 TW

Sire of Sire:
W 834/06 TW

Sire of Dam:
MD 960/13 TW

Sire:
FAR40/16 TW

Dam:
MD 1080/15 22222

Sire:
W442/13 TW

Dam:
MD 1416/16 22222

Dam of Sire:
FAR 128/14 TW 22

Dam of Dam:
MD 2055/13 TW 1

Dam of Sire:
W 26/08 22222

Dam of Dam:
MD 2263/13 TW 112

Comment: Thick, grunty, sound.

Comment: Extremely good carcass sheep.

SIRE	MERRYDOWNS 1585/18 TW
-------------	-----------------------

NZM- W+M+W	RANK	Number of Progeny
1723	8	199

SIRE	MERRYDOWNS 2036/18 TW
-------------	-----------------------

NZM- W+M+W	RANK	Number of Progeny
1536	12	44

Sire of Sire:
W 109/13 TW

Sire of Dam:
W 442/13 TW

Sire of Sire:
W 442/13 TW

Sire of Dam:
MD 1431/11 TR

Sire:
MD902/16 TW

Dam:
MD 1147/16 TW 2

Sire:
MD1043/16 TW

Dam:
MD 1198/13 TW 2222

Dam of Sire:
MD 1947/14 TW 22

Dam of Dam:
MD 1418/14 TW 22

Dam of Sire:
MD 1935/14 TW 21211

Dam of Dam:
BL 2526/09 TW 22222222

Comment: Moderate framed, quality,sound. Top breeding ram. 3 sons retained.

Comment: Extremely high quality, long second shear medium to strong wool.

SIRE	RUAKIWI 07/19	
-------------	---------------	--

NZM- W+M+W	RANK	Number of Progeny
2627	4	193

Sire of Sire:
RK 93/15 TR

Sire of Dam:
RK 590/09 TW

Sire:
RK338/17 TW

Dam:
RK 138/11 TW 2212212

Dam of Sire:
RK 277/14 TW 12

Dam of Dam:
RK 90/07 TW 2222

Comment: New sire has bred extremely well. Purchased with an index of 2406. 2 sons retained

SIRE	MERRYVALE 7/19 TW	
-------------	-------------------	--

NZM- W+M+W	RANK	Number of Progeny
1720	9	72

Sire of Sire:
MD 1986/11 TW

Sire of Dam:
WD 99/15

Sire:
MD2273/15

Dam:
WD 57/17 TW 22

Dam of Sire:
MD 2134/12 21223

Dam of Dam:
WD 116/14

Comment: Ranked 1st of his year with an index of 2408.

SIRE	EDEN BANK 60/19 TW	
-------------	--------------------	--

NZM- W+M+W	RANK	Number of Progeny
556	17	188

Sire of Sire:
AU 233/12 TW

Sire of Dam:
EB 37/14

Sire:
MD802/14 TW

Dam:
EB 110/15 TW 2223

Dam of Sire:
MD 1112/12 TW 22221

Dam of Dam:
EB 275/08 2222

Comment: New sire used across 2 tooth ewes. Purchased with an index of 1362.

SIRE	MERRYVALE 101/19 TR	
-------------	---------------------	--

NZM- W+M+W	RANK	Number of Progeny
2298	6	128

Sire of Sire:
MD 1986/11 TW

Sire of Dam:
MA 3/15 TW

Sire:
MD2273/15

Dam:
WD 87/17 TW 3

Dam of Sire:
MD 2134/12 21223

Dam of Dam:
WD 34/14

Comment: Ranked 2nd of his year with an index of 2180.

SIRE	MANA 110/19 TW	
-------------	----------------	--

NZM- W+M+W	RANK	Number of Progeny
1662	11	194

Sire of Sire:
BL 2044/14 TW

Sire of Dam:
TEU 6019/11 TW

Sire:
MA94/16 TW

Dam:
MA 479/14 TW 12122

Dam of Sire:
STP 4551/14 TW 1222

Dam of Dam:
MA 405/12 TR 22322

Comment: New sire used across 2 tooth ewes. Purchased with an index of 2761. 1 son retained.

SIRE	RUAKIWI 393/19 TW	
-------------	-------------------	--

NZM- W+M+W	RANK	Number of Progeny
1044	16	180

Sire of Sire:
RK 81/13 TR

Sire of Dam:
RK 93/15 TR

Sire:
RK284/17 TW

Dam:
RK 302/17 TW 2

Dam of Sire:
RK 910/10 TW 12222222

Dam of Dam:
RK 89/13 TW 2222

Comment: New sire used across 2 tooth ewes. Purchased with an index of 2047.

SIRE	MANA 815/19 TW	
-------------	----------------	--

NZM- W+M+W	RANK	Number of Progeny
467	18	197

Sire of Sire:
PA 675/15 TW

Sire of Dam:
TU 5681/10 TW

Sire:
MA406/17 TW

Dam:
MA 83/13 TW 12222

Dam of Sire:
MA 567/15 2222

Dam of Dam:
MA 182/08 22222

Comment: New sire used across 2 tooth ewes. Purchased with an index of 2431.

SIRE	MERRYDOWNS 1529/19 TW	
-------------	-----------------------	--

NZM- W+M+W	RANK	Number of Progeny
2752	3	153

Sire of Sire:
WIM 289/13 TW

Sire of Dam:
MD 2204/12 TW

Sire:
WIM1166/15

Dam:
MD 1351/17 TW 22

Dam of Sire:
WIM 850/13 TW 111

Dam of Dam:
MD 900/15 TW 2121

Comment: Extremely good carcass sheep, thick and grunty.

SIRE	MERRYDOWNS 1888/19 TW
-------------	-----------------------

NZM- W+M+W	RANK	Number of Progeny
2329	5	110

Sire of Sire:

MD 1439/15 TW

Sire of Dam:

W 442/13 TW

Sire:

MD1624/17 TW

Dam:

MD 951/16 TW 222

Dam of Sire:

MD 2643/13 TW 223

Dam of Dam:

MD 1219/14 TW 222

Comment: Real grunter, sound as a bell, quality plus.

SIRE	MERRYDOWNS 1897/19 TW
-------------	-----------------------

NZM- W+M+W	RANK	Number of Progeny
1211	15	146

Sire of Sire:

MD 1986/11 TW

Sire of Dam:

MD 1292/14 TW

Sire:

MD2273/15

Dam:

MD 1053/17 TW 2232

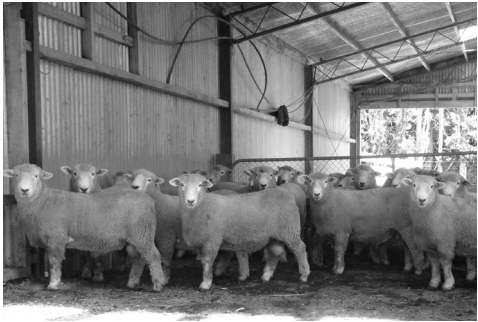
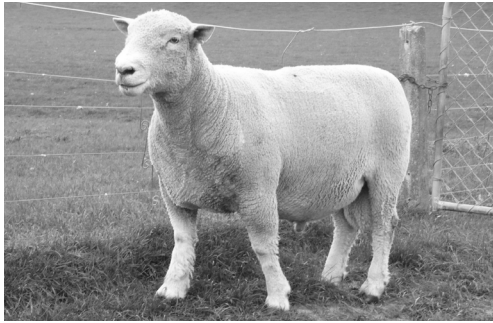
Dam of Sire:

MD 2134/12 21223

Dam of Dam:

MD 919/14 TW 12

Comment: All Breeds champion Gore.





Lot 1	MERRYDOWNS 2353/21 TW			
--------------	-----------------------	--	--	--

EBV	2411	4.19	6.96	0.13
	MW+M+W	WWTgBV	LW8gBV	NLBgBV
RANK	49/643	24/643	98/643	531/643

NZWTA Wool Testing Results	Wool Actual	MFD	CofV	Curv
	2.5	34.6	17.4	54.5

Sire of Sire:
RK 338/17 TW

Sire of Dam:
MD 911/14 TW

Sire:
RK 07/19

Dam:
MD 1678/16 TW 0.1222

Dam of Sire:
RK 138/11 TW 0.122223122

Dam of Dam:
MD 2278/13 TW 0.222

Purchaser: _____ Price: _____

Lot 2	MERRYVALE 131/21 TW			
--------------	---------------------	--	--	--

EBV	2095	2.44	3.56	0.13
	MW+M+W	WWTgBV	LW8gBV	NLBgBV
RANK	26/109	60/109	78/109	88/109

NZWTA Wool Testing Results	Wool Actual	MFD	CofV	Curv
	2.4	34.9	21.7	62.1

Sire of Sire:
MD 2273/15

Sire of Dam:
RW 984/12 TW

Sire:
MD 1897/19 TW

Dam:
WD 447/17 0.122

Dam of Sire:
MD 1053/17 TW 0.223

Dam of Dam:
WD 583/12 TW 0.2221

Purchaser: _____ Price: _____

Lot 3

MERRYDOWNS 1993/21 TW

EBV	2763	3.79	5.72	0.14
	MW+M+W	WWTgBV	LW8gBV	NLBgBV
RANK	1/643	57/643	222/643	499/643

NZWTA Wool Testing Results	Wool Actual	MFD	CofV	Curv
	2.7	35.3	16.6	50.7

Sire of Sire:

RK 338/17 TW

Sire of Dam:

MD 960/13 TW

Sire:

RK 07/19

Dam:

MD 1421/16 TW 0.2222

Dam of Sire:

RK 138/11 TW 0.122223122

Dam of Dam:

MD 1907/13 TW 0.2222

Purchaser: _____ Price: _____

Lot 4

EBV				
	MW+M+W	WWTgBV	LW8gBV	NLBgBV
RANK				

NZWTA Wool Testing Results	Wool Actual	MFD	CofV	Curv

Sire of Sire:**Sire of Dam:****Sire:****Dam:****Dam of Sire:****Dam of Dam:**

Purchaser: _____ Price: _____

Withdrawn

Lot 5

MERRYDOWNS 2339/21 TW

EBV	1572	3.13	3.36	0.12
	MW+M+W	WWTgBV	LW8gBV	NLBgBV
RANK	366/643	166/643	487/643	558/643

NZWTA Wool Testing Results	Wool Actual	MFD	CofV	Curv
	2.5	34.3	19.4	42.2

Sire of Sire:

MD 2273/15

Sire of Dam:

MD 1292/14 TW

Sire:

MV 07/19 TW

Dam:

MD 1990/17 TW 0.222

Dam of Sire:

WD 57/17 TW 0.22

Dam of Dam:

MD 1298/12 TW 0.12222

Purchaser: _____ Price: _____

Lot 6

MERRYDOWNS 2729/21 TW

EBV	2518	2.34	5.5	0.28
	MW+M+W	WWTgBV	LW8gBV	NLBgBV
RANK	26/643	348/643	252/643	63/643

NZWTA Wool Testing Results	Wool Actual	MFD	CofV	Curv
	2.4	34.2	19	68.1

Sire of Sire:

MD 1624/17 TR

Sire of Dam:

MD 1539/15 TW

Sire:

MD 1888/19 TW

Dam:

MD 1120/17 TR 0.222

Dam of Sire:

MD 951/16 TW 0.222

Dam of Dam:

OF 223/11 0.12323

Purchaser: _____ Price: _____

Lot 7

EBV				
	MW+M+W	WWTgBV	LW8gBV	NLBgBV
RANK				

NZWTA Wool Testing Results	Wool Actual	MFD	CofV	Curv

Sire of Sire:

Sire of Dam:

Sire:

Dam:

Dam of Sire:

Dam of Dam:

Purchaser: _____ Price: _____

Lot 8

MERRYDOWNS 1821/21 TW

EBV	2379	4.32	6.07	0.09
	MW+M+W	WWTgBV	LW8gBV	NLBgBV
RANK	62/643	22/643	181/643	601/643

NZWTA Wool Testing Results	Wool Actual	MFD	CofV	Curv
	2.8	36.1	18.7	52.4

Sire of Sire:

Sire of Dam:

WIM 1166/15

MD 1292/14 TW

Sire:

Dam:

MD 1529/19 TW

MD 1395/16 TW 0.2212

Dam of Sire:

Dam of Dam:

MD 1351/17 TW 0.22

MD 833/12 TW 0.122

Purchaser: _____ Price: _____

Lot 9

MERRYDOWNS 1613/21

EBV	2003	2.77	4.65	0.05
	MW+M+W	WWTgBV	LW8gBV	NLBgBV
RANK	182/643	246/643	352/643	631/643

NZWTA Wool Testing Results	Wool Actual	MFD	CofV	Curv
	2.6	33.1	18.3	46

Sire of Sire:

RK 284/17 TW

Sire of Dam:

WIM 1166/15

Sire:

RK 393/19 TW

Dam:

MD 2205/19 TW 0.1

Dam of Sire:

RK 302/17 TW 0.223

Dam of Dam:

MD 1480/16 TW 0.1222

Purchaser: _____ Price: _____

Lot 10

MERRYDOWNS 1984/21 TW

EBV	1875	3.36	5.95	0.17
	MW+M+W	WWTgBV	LW8gBV	NLBgBV
RANK	240/643	123/643	192/643	367/643

NZWTA Wool Testing Results	Wool Actual	MFD	CofV	Curv
	2.4	31.7	19.5	48.2

Sire of Sire:

MD 2273/15

Sire of Dam:

WIM 1166/15

Sire:

MD 1897/19 TW

Dam:

MD 1943/18 TR 0.22

Dam of Sire:

MD 1053/17 TW 0.223

Dam of Dam:

MD 1906/16 TR 0.3222

Purchaser: _____ Price: _____

Lot 11

MERRYVALE 27/21

EBV	1321	0.81	1.82	0.14
	MW+M+W	WWTgBV	LW8gBV	NLBgBV
RANK	76/109	102/109	97/109	85/109

NZWTA Wool Testing Results	Wool Actual	MFD	CofV	Curv
	2.5	38	16.1	69.6

Sire of Sire:

MD 802/14 TW

Sire of Dam:

MD 1537/15 TW

Sire:

EB 60/19 TW

Dam:

MV 200/19 TW 0.1

Dam of Sire:

EB 110/15 TW 0.22232

Dam of Dam:

WD 309/17 0.222

Purchaser: _____ Price: _____

Lot 12

MERRYDOWNS 1121/21 TW

EBV	2161	3.59	6.25	0.16
	MW+M+W	WWTgBV	LW8gBV	NLBgBV
RANK	120/643	80/643	169/643	400/643

NZWTA Wool Testing Results	Wool Actual	MFD	CofV	Curv
	2.6	34.1	22.2	59.6

Sire of Sire:

MD 2273/15

Sire of Dam:

WIM 1166/15

Sire:

MD 1897/19 TW

Dam:

MD 1260/18 TW 0.12

Dam of Sire:

MD 1053/17 TW 0.223

Dam of Dam:

MD 2108/16 TW 0.2233

Purchaser: _____ Price: _____

Lot 13

MERRYDOWNS 1651/21 TW

EBV	1475	2.06	5.27	0.13
	MW+M+W	WWTgBV	LW8gBV	NLBgBV
RANK	405/643	414/643	278/643	519/643

NZWTA Wool Testing Results	Wool Actual	MFD	CofV	Curv
	2.6	33.5	19.1	60.8

Sire of Sire:

MD 2273/15

Sire of Dam:

KTI D314/16 TW

Sire:

MD 1897/19 TW

Dam:

KTI C200/18 0.12

Dam of Sire:

MD 1053/17 TW 0.223

Dam of Dam:

KTI K879/14 TW 0.1111

Purchaser: _____ Price: _____

Lot 14

MERRYVALE 32/21

EBV	1923	5.13	11.06	0.17
	MW+M+W	WWTgBV	LW8gBV	NLBgBV
RANK	36/109	2/109	1/109	69/109

NZWTA Wool Testing Results	Wool Actual	MFD	CofV	Curv
	2.6	35.8	20.2	52.3

Sire of Sire:

MA 94/16 TW

Sire of Dam:

MD 1537/15 TW

Sire:

MA 110/19 TW

Dam:

MV 144/19 TW 0.1

Dam of Sire:

MA 479/14 TW 0.12122

Dam of Dam:

WD 97/17 TW 0.221

Purchaser: _____ Price: _____

Lot 15

MERRYVALE 104/21 TW

EBV	2403	3.71	8.32	0.34
	MW+M+W	WWTgBV	LW8gBV	NLBgBV
RANK	13/109	19/109	6/109	1/109

NZWTA Wool Testing Results	Wool Actual	MFD	CofV	Curv
	2.6	35	22	39.8

Sire of Sire:

MD 1439/15 TW

Sire of Dam:

MA 03/15 TW

Sire:

MD 1624/17 TW

Dam:

WD 364/17 TW 0.222

Dam of Sire:

MD 2643/13 TW 0.223

Dam of Dam:

WD 227/14 TW 0.223

Purchaser: _____ Price: _____

Lot 16

MERRYDOWNS 2177/21

EBV	2530	2.71	5.06	0.22
	MW+M+W	WWTgBV	LW8gBV	NLBgBV
RANK	23/643	263/643	297/643	204/643

NZWTA Wool Testing Results	Wool Actual	MFD	CofV	Curv
	2.7	39.4	19.6	59.5

Sire of Sire:

RK 338/17 TW

Sire of Dam:

W 442/13 TW

Sire:

RK 07/19

Dam:

MD 1057/16 TW 0.2221

Dam of Sire:

RK 138/11 TW 0.122223122

Dam of Dam:

MD 1144/14 TR 0.2222

Purchaser: _____ Price: _____

Lot 17

MERRYDOWNS 2243/21 TW

EBV	2705	6	12.14	0.18
	MW+M+W	WWTgBV	LW8gBV	NLBgBV
RANK	2/643	2/643	2/643	356/643

NZWTA Wool Testing Results	Wool Actual	MFD	CofV	Curv
	2.1	35.3	20.6	49.8

Sire of Sire:

WIM 1166/15

Sire of Dam:

MD 1986/11 TW

Sire:

MD 1529/19 TW

Dam:

MD 2336/15 TW 0.32322

Dam of Sire:

MD 1351/17 TW 0.22

Dam of Dam:

MD 1344/12 TW 0.22221

Purchaser: _____ Price: _____

Lot 18

MERRYDOWNS 1734/21

EBV	1435	3.51	7.75	0.22
	MW+M+W	WWTgBV	LW8gBV	NLBgBV
RANK	426/643	89/643	47/643	189/643

NZWTA Wool Testing Results	Wool Actual	MFD	CofV	Curv
	2.3	36.3	17.4	66.4

Sire of Sire:

MA 94/16 TW

Sire of Dam:

MD 902/16 TW

Sire:

MA 110/19 TW

Dam:

MD 2013/19 TW 0.1

Dam of Sire:

MA 479/14 TW 0.12122

Dam of Dam:

MD 1759/16 TW 0.12

Purchaser: _____ Price: _____

Lot 19

MERRYDOWNS 2268/21

EBV	2073	3.03	6.44	0.2
	MW+M+W	WWTgBV	LW8gBV	NLBgBV
RANK	153/643	187/643	152/643	280/643

NZWTA Wool Testing Results	Wool Actual	MFD	CofV	Curv
	2.3	35.9	15.7	52.4

Sire of Sire:

MD 1624/17 TW

Sire of Dam:

MD 1292/14 TW

Sire:

MD 1888/19 TW

Dam:

MD 1269/18 TW 0.21

Dam of Sire:

MD 951/16 TW 0.222

Dam of Dam:

MD 1859/16 TR 0.223

Purchaser: _____ Price: _____

Lot 20

MERRYDOWNS 2424/21 TW

EBV	2175	2.08	6.25	0.25
	MW+M+W	WWTgBV	LW8gBV	NLBgBV
RANK	116/643	410/643	168/643	107/643

NZWTA Wool Testing Results	Wool Actual	MFD	CofV	Curv
	2.5	35.9	18.4	49

Sire of Sire:

FAR 40/16 TW

Sire of Dam:

WIM 1166/15

Sire:

MD 1065/18 TW

Dam:

MD 1358/18 TW 0.22

Dam of Sire:

MD 1080/15 0.22222

Dam of Dam:

MD 1661/16 TW 0.2233

Purchaser: _____ Price: _____

Lot 21

MERRYDOWNS 2473/21 TW

EBV	2429	3.25	4.73	0.13
	MW+M+W	WWTgBV	LW8gBV	NLBgBV
RANK	43/643	137/643	341/643	521/643

NZWTA Wool Testing Results	Wool Actual	MFD	CofV	Curv
	2.3	34.3	16.5	63

Sire of Sire:

WIM 1166/15

Sire of Dam:

MD 1388/14 TW

Sire:

MD 1529/19 TW

Dam:

MD 1597/16 TW .22.2

Dam of Sire:

MD 1351/17 TW 0.22

Dam of Dam:

TOT 663/10 TW 0.12232

Purchaser: _____ Price: _____

Lot 22

MERRYDOWNS 2533/21

EBV	2519	3.36	7.34	0.22
	MW+M+W	WWTgBV	LW8gBV	NLBgBV
RANK	25/643	121/643	71/643	182/643

NZWTA Wool Testing Results	Wool Actual	MFD	CofV	Curv
	2.4	35.1	18.4	56

Sire of Sire:

MD 1624/17 TW

Sire of Dam:

WIM 1166/15

Sire:

MD 1888/19 TW

Dam:

MD 1261/18 TW 0.21

Dam of Sire:

MD 951/16 TW 0.222

Dam of Dam:

MD 2014/16 TW 0.2231

Purchaser: _____ Price: _____

Lot 23

MERRYDOWNS 1547/21

EBV	1793	3.19	6.14	0.22
	MW+M+W	WWTgBV	LW8gBV	NLBgBV
RANK	274/643	150/643	175/643	199/643

NZWTA Wool Testing Results	Wool Actual	MFD	CofV	Curv
	2.5	39.5	17.3	60.8

Sire of Sire:

MA 94/16 TW

Sire of Dam:

WIM 1166/15

Sire:

MA 110/19 TW

Dam:

MD 1306/19 TW 0.1

Dam of Sire:

MA 479/14 TW 0.12122

Dam of Dam:

MD 2172/17 TW 0.222

Purchaser: _____ Price: _____

Lot 24

MERRYDOWNS 1482/21 TW

EBV	1515	2.21	4.34	0.11
	MW+M+W	WWTgBV	LW8gBV	NLBgBV
RANK	391/643	376/643	390/643	564/643

NZWTA Wool Testing Results	Wool Actual	MFD	CofV	Curv
	3	39.1	18.8	50.8

Sire of Sire:

RK 284/17 TW

Sire of Dam:

MD 1292/14 TW

Sire:

RK 393/19 TW

Dam:

MD 1324/19 TW 0.2

Dam of Sire:

RK 302/17 TW 0.223

Dam of Dam:

MD 1342/15 TW 0.1223

Purchaser: _____ Price: _____

Lot 25

MERRYDOWNS 1862/21 TW

EBV	2336	4.41	8.76	0.15
	MW+M+W	WWTgBV	LW8gBV	NLBgBV
RANK	71/643	15/643	18/643	461/643

NZWTA Wool Testing Results	Wool Actual	MFD	CofV	Curv
	2.2	33.8	18.4	46.6

Sire of Sire:

WIM 1166/15

Sire of Dam:

MD 1986/11 TW

Sire:

MD 1529/19 TW

Dam:

MD 2128/15 TW 0.22132

Dam of Sire:

MD 1351/17 TW 0.22

Dam of Dam:

MD 2309/12 TW 0.3222

Purchaser: _____ Price: _____

Lot 26

EBV				
	MW+M+W	WWTgBV	LW8gBV	NLBgBV
RANK				

NZWTA Wool Testing Results	Wool Actual	MFD	CofV	Curv

Sire of Sire:**Sire of Dam:****Sire:****Dam:****Dam of Sire:****Dam of Dam:**

Purchaser: _____ Price: _____

Withdrawn

Lot 27

MERRYDOWNS 1795/21 TW

EBV	2505	2.67	4.78	0.25
	MW+M+W	WWTgBV	LW8gBV	NLBgBV
RANK	29/643	268/643	332/643	123/643

NZWTA Wool Testing Results	Wool Actual	MFD	CofV	Curv
	2.4	38	17.6	49.6

Sire of Sire:

WIM 289/13 TW

Sire of Dam:

MD 1465/16

Sire:

WIM 1166/15

Dam:

MD 1100/18 0.22

Dam of Sire:

WIM 850/13 TW 11110

Dam of Dam:

MD 974/16 TW 0.1223

Purchaser: _____ Price: _____

Lot 28

MERRYDOWNS 2536/21 TW

EBV	1832	1.59	2.75	0.28
	MW+M+W	WWTgBV	LW8gBV	NLBgBV
RANK	258/643	503/643	530/643	62/643

NZWTA Wool Testing Results	Wool Actual	MFD	CofV	Curv
	2.2	36.2	18.1	50.6

Sire of Sire:

MD 1624/17 TW

Sire of Dam:

MD 1465/16

Sire:

MD 1888/19 TW

Dam:

MD 1634/18 TW 0.22

Dam of Sire:

MD 951/16 TW 0.222

Dam of Dam:

BL 2526/09 TW 122222221

Purchaser: _____ Price: _____

Lot 29

MERRYDOWNS 2390/21 TW

EBV	1738	3.74	7.36	0.22
	MW+M+W	WWTgBV	LW8gBV	NLBgBV
RANK	296/643	61/643	70/643	214/643

NZWTA Wool Testing Results	Wool Actual	MFD	CofV	Curv
	2	33	20.3	63.1

Sire of Sire:

RK 338/17 TW

Sire of Dam:

MD 1043/16 TW

Sire:

RK07/19

Dam:

MD 2193/18 TW 0.22

Dam of Sire:

RK 138/11 TW 0.122223122

Dam of Dam:

MD 1596/16 TW 0.223

Purchaser: _____ Price: _____

Lot 30

MERRYDOWNS 2247/21 TW

EBV	2377	3.64	7.18	0.22
	MW+M+W	WWTgBV	LW8gBV	NLBgBV
RANK	63/643	71/643	83/643	184/643

NZWTA Wool Testing Results	Wool Actual	MFD	CofV	Curv
	2.5	36.7	19.2	59.7

Sire of Sire:

WIM 289/13 TW

Sire of Dam:

MD 2273/15

Sire:

WIM 1166/15

Dam:

MD 2348/18 TR 0.22

Dam of Sire:

WIM 850/13 TW 11110

Dam of Dam:

MD 1327/15 TW 0.33

Purchaser: _____ Price: _____

Lot 31

MERRYDOWNS 1313/21 TR

EBV	2452	3.63	6.51	0.33
	MW+M+W	WWTgBV	LW8gBV	NLBgBV
RANK	40/643	72/643	148/643	8/643

NZWTA Wool Testing Results	Wool Actual	MFD	CofV	Curv
	2.7	39.9	18.8	70.1

Sire of Sire:

MA 94/16 TW

Sire of Dam:

WIM 1166/15

Sire:

MA 110/19 TW

Dam:

MD 2212/19 TW 0.3

Dam of Sire:

MA 479/14 TW 0.12122

Dam of Dam:

MD 1356/17 TW 0.2

Purchaser: _____ Price: _____

Lot 32

MERRYVALE 63/21 TR

EBV	1569	2.78	6.13	0.08
	MW+M+W	WWTgBV	LW8gBV	NLBgBV
RANK	59/109	49/109	34/109	106/109

NZWTA Wool Testing Results	Wool Actual	MFD	CofV	Curv
	2.2	34.9	15.5	47

Sire of Sire:

RK 284/17 TW

Sire of Dam:

WIM 1166/15

Sire:

RK 393/19 TW

Dam:

MV 170/19 TW 0.1

Dam of Sire:

RK 302/17 TW 0.223

Dam of Dam:

MV 06/15 TW 0.22221

Purchaser: _____ Price: _____

Lot 33**MERRYDOWNS 1845/21 TW**

EBV	2347	3.58	6.63	0.21
	MW+M+W	WWTgBV	LW8gBV	NLBgBV
RANK	67/643	83/643	133/643	215/643

NZWTA Wool Testing Results	Wool Actual	MFD	CofV	Curv
	2.2	35.2	19.8	67.2

Sire of Sire:

WIM 289/13 TW

Sire:

WIM 1166/15

Dam of Sire:

WIM 850/13 TW 11110

Purchaser: _____**Sire of Dam:**

MD 1465/16

Dam:

MD 2229/18 TW 0.22

Dam of Dam:

MD 886/12 TR 0.22222

Price: _____Taking agribusiness to
the next level

At AgriFocus we are specialist farm accountants and are committed to helping our clients achieve their financial and business goals.

Our team have a rural background and understand the demands of a farm business. By treating each client as an individual, we can better understand their business and can work together to:

- Improve profit and cashflow
- Create wealth
- Minimise taxation
- Put you in control of your business

We offer:

- A full range of accounting services
- Large number of on-farm meetings
- Farm succession planning
- Experts at assisting with the start-up of new farming businesses

Contact Brett or our Invercargill or Gore
offices today.

Brett McDonough B. Com. Ag. (VFM)
0276 815 162
Brett@agrifocus.co.nz

(03) 2142234
admin@agrifocus.co.nz

Lot 34

MERRYDOWNS SD 1009/21 TW

EBV	1179	2.51	4.93	0.17	21.2
	NZTW	WWTgBV	LW8gBV	NLBgBV	EMA Actual
RANK	45/465	164/465	126/465	32/465	27/174

Sire of Sire:

HF K7/16 TW

Sire of Dam:

MD 338/15 TW

Sire:

MD 1100/19 TW

Dam:

MD 472/18 TW 0.32

Dam of Sire:

MD 80/16

Dam of Dam:

MD 222/13 TW 0.22221

Purchaser: _____ Price: _____

Lot 35

MERRYDOWNS SD 193/21

EBV	1053	2.78	4.37	0.08	21.5
	NZTW	WWTgBV	LW8gBV	NLBgBV	EMA Actual
RANK	95/465	112/465	187/465	251/465	20/174

Sire of Sire:

WD 760/17 TW

Sire of Dam:

MD 618/16 TW

Sire:

MD 67/19 TW

Dam:

MD 261/18 TW 0.21

Dam of Sire:

MD 830/17 TW

Dam of Dam:

MD 112/15 TW 0.22122

Purchaser: _____ Price: _____

Lot 36

MERRYDOWNS SD 489/21 TW

EBV	808	2.39	4.62	0.03	20.4
	NZTW	WWTgBV	LW8gBV	NLBgBV	EMA Actual
RANK	264/465	192/465	161/465	372/465	47/174

Sire of Sire:

WD 760/17 TW

Sire of Dam:

MAC 14/13

Sire:

MD 67/19 TW

Dam:

MD 224/16 TW 0.3122

Dam of Sire:

MD 830/17 TW

Dam of Dam:

MD 528/14 TW 0.1

Purchaser: _____ Price: _____

Lot 37

MERRYDOWNS SD 587/21 TW

EBV	1097	3.43	5.8	0.05	23.6
	NZTW	WWTgBV	LW8gBV	NLBgBV	EMA Actual
RANK	73/465	29/465	49/465	330/465	3/174

Sire of Sire:

WD 760/17 TW

Sire of Dam:

MAC 14/13 TW

Sire:

MD 67/19 TW

Dam:

MD 43/16 TW 0.2122

Dam of Sire:

MD 830/17 TW

Dam of Dam:

MD 56/14 TW 0.2

Purchaser: _____ Price: _____

Lot 38

MERRYDOWNS SD 478/21 TW

EBV	1270	3.33	6.72	0.11	22.4
	NZTW	WWTgBV	LW8gBV	NLBgBV	EMA Actual
RANK	20/465	41/465	20/465	137/465	9/174

Sire of Sire:

WD 760/17 TW

Sire of Dam:

MD 04/15 TR

Sire:

MD 67/19 TW

Dam:

MD 281/16 TW 0.2122

Dam of Sire:

MD 830/17 TW

Dam of Dam:

MD 238/10 TW 0.2221321

Purchaser: _____ Price: _____

Lot 39

MERRYDOWNS SD 15/21 TW

EBV	974	2.31	4.35	0.02	20.7
	NZTW	WWTgBV	LW8gBV	NLBgBV	EMA Actual
RANK	142/465	210/465	194/465	398/465	37/174

Sire of Sire:

MD 618/16 TW

Sire of Dam:

WLH 231/16 TW

Sire:

MD 714/19 TW

Dam:

MD 573/18 TW 0.12

Dam of Sire:

MD 216/16 TW

Dam of Dam:

MD 606/16 TW 0.2222

Purchaser: _____ Price: _____

Lot 40

MERRYDOWNS SD 764/21 TW

EBV	1313	3.71	7.79	0.16	18.1
	NZTW	WWTgBV	LW8gBV	NLBgBV	EMA Actual
RANK	15/465	12/465	4/465	49/465	125/174

Sire of Sire:
HF K7/16 TW

Sire of Dam:
MD 176/16 TR

Sire:
MD 281/19 TW

Dam:
MD 866/18 TR 0.12

Dam of Sire:
MD 533/16

Dam of Dam:
MD 433/11 TW 0.222213

Purchaser: _____ Price: _____

Lot 41

MERRYDOWNS SD 559/21 TW

EBV	1134	3.12	6.1	0.01	20.9
	NZTW	WWTgBV	LW8gBV	NLBgBV	EMA Actual
RANK	62/465	68/465	39/465	409/465	32/174

Sire of Sire:
HF K7/16 TW

Sire of Dam:
MD 276/15 TW

Sire:
MD 281/19 TW

Dam:
MD 458/16 TR 0.2212

Dam of Sire:
MD 533/16

Dam of Dam:
MD 692/13 TW 0.12

Purchaser: _____ Price: _____

Lot 42

MERRYDOWNS SD 1201/21 TW

EBV	943	3.35	6.12	0.11	22.4
	NZTW	WWTgBV	LW8gBV	NLBgBV	EMA Actual
RANK	156/465	37/465	37/465	147/465	9/174

Sire of Sire:

ND216/14 TW

Sire of Dam:

WD 760/17 TW

Sire:

KD 36/18 TW

Dam:

MD 201/19 0.2

Dam of Sire:

KD 226/11

Dam of Dam:

MD 153/17 TW 0.233

Purchaser: _____ Price: _____

Lot 43

MERRYDOWNS SD 54/21 TW

EBV	970	3.48	6.38	0.09	18.4
	NZTW	WWTgBV	LW8gBV	NLBgBV	EMA Actual
RANK	143/465	22/465	28/465	192/465	117/174

Sire of Sire:

ND216/14 TW

Sire of Dam:

WD 760/17 TW

Sire:

KD 36/18 TW

Dam:

MD 58/19 0.2

Dam of Sire:

KD 226/11

Dam of Dam:

MD 278/17 TW 0.2

Purchaser: _____ Price: _____

Lot 44

MERRYDOWNS SD 548/21 TW

EBV	884	2.06	4.66	0.07	20.1
	NZTW	WWTgBV	LW8gBV	NLBgBV	EMA Actual
RANK	196/465	274/465	154/465	291/465	56/174

Sire of Sire:

WD 760/17 TW

Sire of Dam:

MD 435/10

Sire:

MD 67/19 TW

Dam:

MD 607/16 TW .22.2

Dam of Sire:

MD 830/17 TW

Dam of Dam:

MD 454/13 TR 0.2131

Purchaser: _____ Price: _____

Lot 45

MERRYDOWNS SD 1159/21 TW

EBV	1002	2.81	4.99	0.09	19.7
	NZTW	WWTgBV	LW8gBV	NLBgBV	EMA Actual
RANK	120/465	109/465	119/465	233/465	70/174

Sire of Sire:

MD 858/17

Sire of Dam:

MD 435/10 TR

Sire:

MD 191/19 TW

Dam:

MD 524/15 0.11332

Dam of Sire:

MD 675/16

Dam of Dam:

MD 676/11 TR 0.32331

Purchaser: _____ Price: _____

Lot 46

MERRYDOWNS SD 435/21

EBV	722	2.11	3.78	-0.04	19.3
	NZTW	WWTgBV	LW8gBV	NLBgBV	EMA Actual
RANK	328/465	259/465	271/465	460/465	82/174

Sire of Sire:
CD 462/16 TW

Sire of Dam:
MD 858/17

Sire:
TRD 09/19 TR

Dam:
MD 268/19 TW 0.1

Dam of Sire:
TRD 125/15

Dam of Dam:
MD 632/15 0.122

Purchaser: _____ Price: _____

Lot 47

MERRYDOWNS SD 1199/21 TW

EBV	1400	3.34	5.44	0.15	19.2
	NZTW	WWTgBV	LW8gBV	NLBgBV	EMA Actual
RANK	6/465	40/465	77/465	64/465	87/174

Sire of Sire:
HF K7/16 TW

Sire of Dam:
MD 04/15 TW

Sire:
MD 1100/19 TW

Dam:
MD 42/17 TW 0.232

Dam of Sire:
MD 80/16

Dam of Dam:
MD 137/13 TW 0.21222

Purchaser: _____ Price: _____

Lot 48

MERRYDOWNS SD 196/21

EBV	824	2.31	5.16	0	19.2
	NZTW	WWTgBV	LW8gBV	NLBgBV	EMA Actual
RANK	247/465	212/465	104/465	425/465	87/174

Sire of Sire:

WD 760/17 TW

Sire of Dam:

MD 435/10 TW

Sire:

MD 67/19 TW

Dam:

MD 190/16 TW 0.1321

Dam of Sire:

MD 830/17 TW

Dam of Dam:

MD 871/13 TR 0.22

Purchaser: _____ Price: _____

Lot 49

MERRYDOWNS SD 560/21 TW

EBV	881	2.44	4.08	0.01	15.2
	NZTW	WWTgBV	LW8gBV	NLBgBV	EMA Actual
RANK	197/465	184/465	234/465	409/465	168/174

Sire of Sire:

HF K7/16 TW

Sire of Dam:

MD 276/15 TW

Sire:

MD 281/19 TW

Dam:

MD 458/16 TR 0.2212

Dam of Sire:

MD 533/16

Dam of Dam:

MD 692/13 TW 0.12

Purchaser: _____ Price: _____

Lot 50

MERRYDOWNS SD 133/21 TW

EBV	629	1.53	2.31	0.03	20.4
	NZTW	WWTgBV	LW8gBV	NLBgBV	EMA Actual
RANK	380/465	388/465	409/465	385/465	47/174

Sire of Sire:

CD 462/16 TW

Sire of Dam:

WD 760/17 TW

Sire:

TRD 09/19 TR

Dam:

MD 09/19 TW 0.2

Dam of Sire:

TRD 125/15

Dam of Dam:

MD 409/17 TW 0.12

Purchaser: _____ Price: _____

Lot 51

MERRYDOWNS SD 327/21 TW

EBV	684	2.51	5.71	0.09	20.6
	NZTW	WWTgBV	LW8gBV	NLBgBV	EMA Actual
RANK	352/465	165/465	57/465	226/465	39/174

Sire of Sire:

ND216/14 TW

Sire of Dam:

WD 808/17 TR

Sire:

KD 36/18 TW

Dam:

MD 109/19 0.2

Dam of Sire:

KD 226/11

Dam of Dam:

MD 663/17 0.332

Purchaser: _____ Price: _____

Lot 52

MERRYDOWNS SD 893/21

EBV	697	2.01	3.49	0.04	18.6
	NZTW	WWTgBV	LW8gBV	NLBgBV	EMA Actual
RANK	342/465	286/465	297/465	363/465	110/174

Sire of Sire:

WD 760/17 TW

Sire of Dam:

MD 276/15 TW

Sire:

MD 67/19 TW

Dam:

MD 233/16 TW 0.3121

Dam of Sire:

MD 830/17 TW

Dam of Dam:

MD 741/13 TW 0.122

Purchaser: _____ Price: _____

Lot 53

MERRYDOWNS SD 879/21 TW

EBV	962	2.68	5.24	0.15	18.6
	NZTW	WWTgBV	LW8gBV	NLBgBV	EMA Actual
RANK	145/465	132/465	96/465	69/465	110/174

Sire of Sire:

MD 618/16 TW

Sire of Dam:

WD 760/17 TW

Sire:

MD 714/19 TW

Dam:

MD 472/19 TW 0.2

Dam of Sire:

MD 216/16 TW

Dam of Dam:

MD 560/17 TW 0.212

Purchaser: _____ Price: _____

Lot 54

MERRYDOWNS SD 09/21 TW

EBV	984	3.46	7.09	0.1	18.1
	NZTW	WWTgBV	LW8gBV	NLBgBV	EMA Actual
RANK	131/465	26/465	15/465	171/465	125/174

Sire of Sire:

ND216/14 TW

Sire of Dam:

MD 176/16 TW

Sire:

KD 36/18 TW

Dam:

MD 208/19 0.2

Dam of Sire:

KD 226/11

Dam of Dam:

MD 292/16 TW 0.2233

Purchaser: _____ Price: _____

Lot 55

MERRYDOWNS SD 228/21 TW

EBV	1163	3.9	7.34	0.02	19.2
	NZTW	WWTgBV	LW8gBV	NLBgBV	EMA Actual
RANK	53/465	5/465	6/465	404/465	87/174

Sire of Sire:

MD 338/15 TW

Sire of Dam:

WLH 70/16 TW

Sire:

MD 858/17

Dam:

MD 129/18 TW 0.12

Dam of Sire:

MD 297/15 TW

Dam of Dam:

MD 282/16 TW 0.2222

Purchaser: _____ Price: _____

Lot 56

MERRYDOWNS SD 690/21 TW

EBV	1264	2.82	4.98	0.09	20.6
	NZTW	WWTgBV	LW8gBV	NLBgBV	EMA Actual
RANK	22/465	108/465	120/465	214/465	39/174

Sire of Sire:

HF K7/16 TW

Sire of Dam:

MD 338/15 TW

Sire:

MD 1100/19 TW

Dam:

MD 299/18 TW 0.22

Dam of Sire:

MD 80/16

Dam of Dam:

MD 576/15 TW 0.12

Purchaser: _____ Price: _____

Lot 57

MERRYDOWNS SD 561/21 TW

EBV	759	2.2	3.69	0.11	19.6
	NZTW	WWTgBV	LW8gBV	NLBgBV	EMA Actual
RANK	296/465	238/465	281/465	154/465	76/174

Sire of Sire:

WD 760/17 TW

Sire of Dam:

MAC 14/13 TW

Sire:

MD 67/19 TW

Dam:

MD 424/18 TW 0.22

Dam of Sire:

MD 830/17 TW

Dam of Dam:

MD 136/10 TW .2.31312

Purchaser: _____ Price: _____

Lot 58

MERRYDOWNS SD 1284/21 TW

EBV	1326	3.44	5.78	0.11	19
	NZTW	WWTgBV	LW8gBV	NLBgBV	EMA Actual
RANK	13/465	27/465	52/465	143/465	99/174

Sire of Sire:

HF K7/16 TW

Sire of Dam:

WLH 70/16 TW

Sire:

MD 1100/19 TW

Dam:

MD 684/18 TW 0.22

Dam of Sire:

MD 80/16

Dam of Dam:

MD 446/16 TW 0.3

Purchaser: _____ Price: _____

Lot 59

MERRYDOWNS SD 580/21

EBV	985	2.39	4.32	0.04	18.7
	NZTW	WWTgBV	LW8gBV	NLBgBV	EMA Actual
RANK	130/465	191/465	197/465	365/465	107/174

Sire of Sire:

MD 618/16 TW

Sire of Dam:

WLH 231/16 TW

Sire:

MD 714/19 TW

Dam:

MD 571/18 TW 0.21

Dam of Sire:

MD 216/16 TW

Dam of Dam:

MD 321/16 TW 0.1233

Purchaser: _____ Price: _____

Lot 60

MERRYDOWNS SD 789/21 TW

EBV	1211	2.94	5.42	0.14	18.4
	NZTW	WWTgBV	LW8gBV	NLBgBV	EMA Actual
RANK	35/465	92/465	78/465	77/465	117/174

Sire of Sire:
HF K7/16 TW

Sire of Dam:
MD 564/15

Sire:
MD 1100/19 TW

Dam:
MD 223/16 TW 0.2222

Dam of Sire:
MD 80/16

Dam of Dam:
MD 137/13 TW 0.21222

Purchaser: _____ Price: _____

Lot 61

MERRYDOWNS SD 295/21 TW

EBV	1204	3.23	5.8	0.11	22
	NZTW	WWTgBV	LW8gBV	NLBgBV	EMA Actual
RANK	37/465	50/465	50/465	145/465	14/174

Sire of Sire:
WD 760/17 TW

Sire of Dam:
MD 176/16 TW

Sire:
MD 67/19 TW

Dam:
MD 904/18 TW 0.32

Dam of Sire:
MD 830/17 TW

Dam of Dam:
MD 121/14 TW 0.112

Purchaser: _____ Price: _____

Lot 62

MERRYDOWNS SD 221/21

EBV	833	1.6	3.18	0.03	20.4
	NZTW	WWTgBV	LW8gBV	NLBgBV	EMA Actual
RANK	241/465	374/465	335/465	375/465	47/174

Sire of Sire:

CD 462/16 TW

Sire of Dam:

HF K7/16 TW

Sire:

TRD '09/19 TR

Dam:

MD 774/19 TW 0.1

Dam of Sire:

TRD 125/15

Dam of Dam:

MD 29/14 0.21223

Purchaser: _____ Price: _____

Lot 63

MERRYDOWNS SD 437/21 TW

EBV	1091	3.9	7.4	0.08	19.2
	NZTW	WWTgBV	LW8gBV	NLBgBV	EMA Actual
RANK	77/465	6/465	5/465	236/465	87/174

Sire of Sire:

ND216/14 TW

Sire of Dam:

MD 176/16 TW

Sire:

KD 36/18

Dam:

MD 402/19 0.2

Dam of Sire:

KD 226/11

Dam of Dam:

MD 445/15 TW 0.21211

Purchaser: _____ Price: _____

Lot 64

EBV				
	MW+M+W	WWTgBV	LW8gBV	NL3gBV
RANK				

NZWTA Wool Testing Results	Wool Actual	MFD	CV	Curv

Sire of Sire:

Sire of Dam:

Sire:

Dam:

Dam of Sire:

Dam of Dam:

Purchaser:

Price:

Off the
IT
Grid
Services

Please feel free to contact Matt on
022 500 8623 or look us up on facebook
search for
'Off the Grid IT Services'

Lot 65

MERRYDOWNS 2679/21 TW

EBV	2241	3.19	7.6	0.23
	MW+M+W	WWTgBV	LW8gBV	NLBgBV
RANK	101/643	152/643	53/643	151/643

NZWTA Wool Testing Results	Wool Actual	MFD	CofV	Curv
	2.5	38.2	18.5	52.3

Sire of Sire:

MD 1624/17 TW

Sire of Dam:

WIM 1166/15

Sire:

MD 1888/19 TW

Dam:

MD 1339/18 TW 0.22

Dam of Sire:

MD 951/16 TW 0.222

Dam of Dam:

MD 1613/16 0.213

Purchaser: _____ Price: _____

Lot 66

MERRYDOWNS 2357/21 TW

EBV	1963	2.49	8.12	0.22
	MW+M+W	WWTgBV	LW8gBV	NLBgBV
RANK	199/643	315/643	36/643	188/643

NZWTA Wool Testing Results	Wool Actual	MFD	CofV	Curv
	2.8	38	18.2	49.5

Sire of Sire:

FAR 40/16 TW

Sire of Dam:

WIM 1166/15

Sire:

MD 1065/18 TW

Dam:

MD 1571/18 TW 0.22

Dam of Sire:

MD 1080/15 0.22222

Dam of Dam:

MD 2005/16 TW 0.22

Purchaser: _____ Price: _____

Lot 67

MERRYDOWNS 2376/21 TW

EBV	1467	3.68	5.88	0.18
	MW+M+W	WWTgBV	LW8gBV	NLBgBV
RANK	415/643	63/643	203/643	347/643

NZWTA Wool Testing Results	Wool Actual	MFD	CofV	Curv
	2.6	37.5	17.4	64.8

Sire of Sire:

MD 2273/15

Sire of Dam:

MD 1439/15 TW

Sire:

MV07/19 TW

Dam:

MD 1386/17 TW .2.2

Dam of Sire:

WD 57/17 TW 0.22

Dam of Dam:

MD 1606/13 TR 0.2222

Purchaser: _____ Price: _____

Lot 68

MERRYDOWNS 2043/21 TW

EBV	1645	4.87	9.36	0.15
	MW+M+W	WWTgBV	LW8gBV	NLBgBV
RANK	332/643	6/643	10/643	431/643

NZWTA Wool Testing Results	Wool Actual	MFD	CofV	Curv
	2.7	33.3	21.1	60

Sire of Sire:

MD 2273/15

Sire of Dam:

MD 1043/16 TW

Sire:

MV 07/19 TW

Dam:

MD 2322/18 TW 0.12

Dam of Sire:

WD 57/17 TW 0.22

Dam of Dam:

MD 1438/11 TR ..22122

Purchaser: _____ Price: _____

Lot 69

MERRYDOWNS 2331/21 TW

EBV	2076	3.04	4.84	0.13
	MW+M+W	WWTgBV	LW8gBV	NLBgBV
RANK	151/643	182/643	326/643	512/643

NZWTA Wool Testing Results	Wool Actual	MFD	CofV	Curv
	2.8	37.1	21.2	69.2

Sire of Sire:

MD 2273/15

Sire of Dam:

WIM 1166/15

Sire:

MD 1897/19 TW

Dam:

MD 1210/17 TW 0.212

Dam of Sire:

MD 1053/17 TW 0.223

Dam of Dam:

MD 1510/14 TW 0.1222

Purchaser: _____ Price: _____

Lot 70

MERRYDOWNS 2069/21 TW

EBV	1970	3.16	5.93	0.16
	MW+M+W	WWTgBV	LW8gBV	NLBgBV
RANK	197/643	157/643	195/643	410/643

NZWTA Wool Testing Results	Wool Actual	MFD	CofV	Curv
	2.5	37	17.6	62

Sire of Sire:

MD 2273/15

Sire of Dam:

MD 1292/14 TW

Sire:

MV 101/19 TR

Dam:

MD 1690/18 TW 0.22

Dam of Sire:

WD 87/17 TW 0.3

Dam of Dam:

MD 1007/16 TR 0.212

Purchaser: _____ Price: _____

Lot 71

MERRYDOWNS 1281/21 TW

EBV	1686	2.61	5.79	0.21
	MW+M+W	WWTgBV	LW8gBV	NLBgBV
RANK	318/643	284/643	214/643	235/643

NZWTA Wool Testing Results	Wool Actual	MFD	CofV	Curv
	2.2	37.2	17.7	60.1

Sire of Sire:

MD 2273/15

Sire of Dam:

W 109/13 TW

Sire:

MV 101/19 TR

Dam:

MD 901/16 0.2232

Dam of Sire:

WD 87/17 TW 0.3

Dam of Dam:

MD 1896/14 TW 0.122

Purchaser: _____ Price: _____

Lot 72

MERRYDOWNS 2335/21 TW

EBV	1935	4.59	8.52	0.21
	MW+M+W	WWTgBV	LW8gBV	NLBgBV
RANK	212/643	11/643	24/643	217/643

NZWTA Wool Testing Results	Wool Actual	MFD	CofV	Curv
	3	37.7	17.8	61.8

Sire of Sire:

MD 2273/15

Sire of Dam:

MD 1465/16

Sire:

MV 07/19 TW

Dam:

MD 1470/18 TR 0.22

Dam of Sire:

WD 57/17 TW 0.22

Dam of Dam:

MD 1032/16 0.312

Purchaser: _____ Price: _____

Lot 73

MERRYDOWNS 2204/21

EBV	1471	2.62	4.86	0.12
	MW+M+W	WWTgBV	LW8gBV	NLBgBV
RANK	411/643	280/643	323/643	557/643

NZWTA Wool Testing Results	Wool Actual	MFD	CofV	Curv
	2.5	35.2	17.2	49.5

Sire of Sire:

RK 338/17 TW

Sire of Dam:

MD 802/14 TW

Sire:

RK 07/19

Dam:

MD 1821/16 TW 0.1221

Dam of Sire:

RK 138/11 TW 0.122223122

Dam of Dam:

MD 1517/11 TW 0.122221

Purchaser: _____ Price: _____

Lot 74

MERRYDOWNS 2216/21 TW

EBV	2507	4.18	6.77	0.11
	MW+M+W	WWTgBV	LW8gBV	NLBgBV
RANK	28/643	25/643	122/643	566/643

NZWTA Wool Testing Results	Wool Actual	MFD	CofV	Curv
	2.5	35.2	19.4	68.5

Sire of Sire:

WIM 1166/15

Sire of Dam:

MD 1537/15 TW

Sire:

MD 1529/19 TW

Dam:

MD 1025/17 TW 0.222

Dam of Sire:

MD 1351/17 TW 0.22

Dam of Dam:

MD 1502/14 TW 0.22322

Purchaser: _____ Price: _____

Lot 75

MERRYDOWNS 2250/21 TW

EBV	2116	2.93	5.2	0.17
	MW+M+W	WWTgBV	LW8gBV	NLBgBV
RANK	134/643	213/643	285/643	359/643

NZWTA Wool Testing Results	Wool Actual	MFD	CofV	Curv
	2.4	37	19.8	56.9

Sire of Sire:

MD 2273/15

Sire of Dam:

WIM 1166/15

Sire:

MD 1897/19 TW

Dam:

MD 1565/17 TW 0.222

Dam of Sire:

MD 1053/17 TW 0.223

Dam of Dam:

MD 882/15 TW 0.21

Purchaser: _____ Price: _____

Lot 76

MERRYDOWNS 1974/21 TW

EBV	1890	3.02	4.76	0.12
	MW+M+W	WWTgBV	LW8gBV	NLBgBV
RANK	229/643	189/643	335/643	550/643

NZWTA Wool Testing Results	Wool Actual	MFD	CofV	Curv
	2.5	37.9	18.9	51.9

Sire of Sire:

RK 338/17 TW

Sire of Dam:

MD 1537/15 TW

Sire:

RK 07/19

Dam:

MD 2172/17 TW 0.222

Dam of Sire:

RK 138/11 TW 0.122223122

Dam of Dam:

MD 1653/12 TR 0.22222

Purchaser: _____ Price: _____

Lot 77

MERRYDOWNS 2023/21 TW

EBV	2166	3.21	4.65	0.14
	MW+M+W	WWTgBV	LW8gBV	NLBgBV
RANK	118/643	146/643	353/643	481/643

NZWTA Wool Testing Results	Wool Actual	MFD	CofV	Curv
	2.6	37.4	18.1	38.3

Sire of Sire:

RK 338/17 TW

Sire of Dam:

MD 1292/14 TW

Sire:

RK 07/19

Dam:

MD 1963/16 TR 0.2212

Dam of Sire:

RK 138/11 TW 0.122223122

Dam of Dam:

MD 1877/12 TW 0.2332

Purchaser: _____ Price: _____

Lot 78

MERRYDOWNS 1369/21 TW

EBV	1920	2.3	4.16	0.16
	MW+M+W	WWTgBV	LW8gBV	NLBgBV
RANK	219/643	357/643	403/643	417/643

NZWTA Wool Testing Results	Wool Actual	MFD	CofV	Curv
	2.5	38	16.7	52.6

Sire of Sire:

RK 284/17 TW

Sire of Dam:

MD 1624/17 TW

Sire:

RK 393/19 TW

Dam:

MD 1769/19 TW 0.2

Dam of Sire:

RK 302/17 TW 0.223

Dam of Dam:

MD 1285/16 TW 0.222

Purchaser: _____ Price: _____

Lot 79

MERRYDOWNS 2340/21

EBV	1745	2.55	2.37	0.1
	MW+M+W	WWTgBV	LW8gBV	NLBgBV
RANK	291/643	298/643	562/643	584/643

NZWTA Wool Testing Results	Wool Actual	MFD	CofV	Curv
	2.3	32.6	20.5	59.1

Sire of Sire:

MD 2273/15

Sire of Dam:

MD 1537/15 TW

Sire:

MV 07/19 TW

Dam:

MD 1049/17 TR 0.221

Dam of Sire:

WD 57/17 TW 0.22

Dam of Dam:

MD 1065/13 TW 0.223213

Purchaser: _____ Price: _____

Lot 80

MERRYDOWNS 1946/21 TW

EBV	2468	3.18	4.8	0.17
	MW+M+W	WWTgBV	LW8gBV	NLBgBV
RANK	38/643	156/643	329/643	372/643

NZWTA Wool Testing Results	Wool Actual	MFD	CofV	Curv
	2.8	35.8	18.9	56.4

Sire of Sire:

MD 2273/15

Sire of Dam:

MD 902/16 TW

Sire:

MV 101/19 TR

Dam:

MD 1619/18 TW 0.22

Dam of Sire:

WD 87/17 TW 0.3

Dam of Dam:

MD 1379/15 0.22

Purchaser: _____ Price: _____

Lot 81

MERRYDOWNS 1840/21

EBV	1084	2.11	3.4	0.05
	MW+M+W	WWTgBV	LW8gBV	NLBgBV
RANK	545/643	399/643	485/643	632/643

NZWTA Wool Testing Results	Wool Actual	MFD	CofV	Curv
	2.7	37.2	19.9	53.8

Sire of Sire:

MD 2273/15

Sire of Dam:

ORR 71/14 TR

Sire:

MD 1897/19 TW

Dam:

MD 2054/17 TW 0.121

Dam of Sire:

MD 1053/17 TW 0.223

Dam of Dam:

MD 2159/15 TW 0.2222

Purchaser: _____ Price: _____

Lot 82

MERRYDOWNS 1282/21 TR

EBV	1622	3.88	9.59	0.18
	MW+M+W	WWTgBV	LW8gBV	NLBgBV
RANK	343/643	42/643	8/643	350/643

NZWTA Wool Testing Results	Wool Actual	MFD	CofV	Curv
	2.5	40.9	17	52.1

Sire of Sire:

MD 1624/17 TW

Sire of Dam:

ORR 71/14 TR

Sire:

MD 1888/19 TW

Dam:

MD 1324/16 TW 0.2223

Dam of Sire:

MD 951/16 TW 0.222

Dam of Dam:

MD 2019/12 TW 0.2222

Purchaser: _____ Price: _____

Lot 83

MERRYDOWNS 2144/21 TW

EBV	1574	4.93	10.11	0.11
	MW+M+W	WWTgBV	LW8gBV	NLBgBV
RANK	365/643	5/643	6/643	568/643

NZWTA Wool Testing Results	Wool Actual	MFD	CofV	Curv
	2.4	36.1	18.5	79.9

Sire of Sire:

MD 2273/15

Sire of Dam:

MD 1292/14 TW

Sire:

MV 101/19 TR

Dam:

MD 1722/17 TW 0.122

Dam of Sire:

WD 87/17 TW 0.3

Dam of Dam:

MD 968/14 TW 0.222222

Purchaser: _____ Price: _____

Lot 84

MERRYDOWNS 1716/21 TW

EBV	1262	2.4	6.54	0.23
	MW+M+W	WWTgBV	LW8gBV	NLBgBV
RANK	487/643	336/643	145/643	167/643

NZWTA Wool Testing Results	Wool Actual	MFD	CofV	Curv
	1.9	36.8	16.5	52.4

Sire of Sire:

MD 802/14 TW

Sire of Dam:

WIM 1166/15

Sire:

EB 60/19 TW

Dam:

MD 1743/19 TR 0.2

Dam of Sire:

EB 110/15 TW 0.22232

Dam of Dam:

MD 2100/15 TW 0.2132

Purchaser: _____ Price: _____

Lot 85

MERRYDOWNS 2178/21 TW

EBV	2265	3.38	4.4	0.14
	MW+M+W	WWTgBV	LW8gBV	NLBgBV
RANK	96/643	119/643	380/643	471/643

NZWTA Wool Testing Results	Wool Actual	MFD	CofV	Curv
	2.5	37	18.5	52.7

Sire of Sire:

RK 338/17 TW

Sire of Dam:

MD 960/13 TW

Sire:

RK 07/19

Dam:

MD 1416/16 0.2222

Dam of Sire:

RK 138/11 TW 0.122223122

Dam of Dam:

MD 2263/13 TW 0.11

Purchaser: _____ Price: _____

Lot 86

MERRYDOWNS 1898/21 TW

EBV	2498	3.41	4.94	0.17
	MW+M+W	WWTgBV	LW8gBV	NLBgBV
RANK	31/643	110/643	310/643	369/643

NZWTA Wool Testing Results	Wool Actual	MFD	CofV	Curv
	2.7	35.5	18.4	51.6

Sire of Sire:

WIM 1166/15

Sire of Dam:

MD 1388/14 TW

Sire:

MD 1529/19 TW

Dam:

MD 928/17 TR 0.222

Dam of Sire:

MD 1351/17 TW 0.22

Dam of Dam:

MD 2348/13 TW 0.22322

Purchaser: _____ Price: _____

Lot 87

MERRYDOWNS 2577/21 TR

EBV	2225	2.99	4.18	0.22
	MW+M+W	WWTgBV	LW8gBV	NLBgBV
RANK	104/643	195/643	398/643	205/643

NZWTA Wool Testing Results	Wool Actual	MFD	CofV	Curv
	2.3	35.3	20.3	54.2

Sire of Sire:

MD 2273/15

Sire of Dam:

WIM 1166/15

Sire:

MD 1897/19 TW

Dam:

MD 1465/17 TW 0.233

Dam of Sire:

MD 1053/17 TW 0.223

Dam of Dam:

MD 1911/15 TR 0.2222

Purchaser: _____ Price: _____

Lot 88

MERRYVALE 113/21

EBV	2623	3.42	5.5	0.17
	MW+M+W	WWTgBV	LW8gBV	NLBgBV
RANK	4/109	26/109	49/109	68/109

NZWTA Wool Testing Results	Wool Actual	MFD	CofV	Curv
	2.7	37.7	17.7	49.4

Sire of Sire:

WIM 289/13 TW

Sire of Dam:

MD 2204/12 TW

Sire:

WIM 1166/15

Dam:

MV11/17 TR 0.221

Dam of Sire:

WIM 850/13 TW 11110

Dam of Dam:

MD 2163/12 TW ..23333

Purchaser: _____ Price: _____

Lot 89

MERRYDOWNS 2704/21 TW

EBV	2465	4.7	8.37	0.14
	MW+M+W	WWTgBV	LW8gBV	NLBgBV
RANK	39/643	10/643	29/643	478/643

NZWTA Wool Testing Results	Wool Actual	MFD	CofV	Curv
	2.3	32.7	18.2	60.1

Sire of Sire:

WIM 289/13 TW

Sire of Dam:

MD 2273/15

Sire:

WIM 1166/15

Dam:

MD 1091/18 0.22

Dam of Sire:

WIM 850/13 TW 11110

Dam of Dam:

MD 1753/16 TW 0.1

Purchaser: _____ Price: _____

Lot 90

MERRYDOWNS 1575/21 TW

EBV	1329	2.8	5.22	0.13
	MW+M+W	WWTgBV	LW8gBV	NLBgBV
RANK	459/643	237/643	282/643	507/643

NZWTA Wool Testing Results	Wool Actual	MFD	CofV	Curv
	2.7	40.5	20.5	57.1

Sire of Sire:

MA 406/17 TW

Sire of Dam:

MD 1537/15 TW

Sire:

MA 815/19 TW

Dam:

MD 2026/19 TW 0.2

Dam of Sire:

MA 83/13 TW 0.12222

Dam of Dam:

MD 1148/17 TW 0.223

Purchaser: _____ Price: _____

Lot 91

MERRYDOWNS 1899/21 TW

EBV	2632	3.94	5.92	0.17
	MW+M+W	WWTgBV	LW8gBV	NLBgBV
RANK	6/643	38/643	198/643	369/643

NZWTA Wool Testing Results	Wool Actual	MFD	CofV	Curv
	2.5	33.9	19.7	59

Sire of Sire:

WIM 1166/15

Sire of Dam:

MD 1388/14 TW

Sire:

MD 1529/19 TW

Dam:

MD 928/17 TR 0.222

Dam of Sire:

MD 1351/17 TW 0.22

Dam of Dam:

MD 2348/13 TW 0.22322

Purchaser: _____ Price: _____

Lot 92

MERRYDOWNS 2191/21 TR

EBV	2324	3.04	4.5	0.23
	MW+M+W	WWTgBV	LW8gBV	NLBgBV
RANK	79/643	184/643	368/643	170/643

NZWTA Wool Testing Results	Wool Actual	MFD	CofV	Curv
	2.7	38.1	19.8	63.2

Sire of Sire:

RK 338/17 TW

Sire of Dam:

MD 2273/15

Sire:

RK 07/19w

Dam:

MD 2324/18 TR 0.23

Dam of Sire:

RK 138/11 TW 0.122223122

Dam of Dam:

MD 1166/15 TW .23.12

Purchaser: _____ Price: _____

Lot 93

MERRYDOWNS 1936/21 TW

EBV	2379	4.7	7.17	0.14
	MW+M+W	WWTgBV	LW8gBV	NLBgBV
RANK	60/643	9/643	84/643	464/643

NZWTA Wool Testing Results	Wool Actual	MFD	CofV	Curv
	2.5	35.1	16.3	70.5

Sire of Sire:

WIM 1166/15

Sire of Dam:

MD 2273/15

Sire:

MD 1529/19 TW

Dam:

MD 1404/17 TW 0.222

Dam of Sire:

MD 1351/17 TW 0.22

Dam of Dam:

MD 1178/14 TW 0.222

Purchaser: _____ Price: _____

Merrydowns
Romney and Southdown Stud
Blair & Sally Robertson
348 Koi Rd
RD1 Gore

Lot 94

MERRYDOWNS SD 595/21 TW

EBV	867	2.67	5.42	0.09	17
	NZTW	WWTgBV	LW8gBV	NLBgBV	EMA Actual
RANK	206/465	133/465	79/465	205/465	143/174

Sire of Sire:

ND216/14 TW

Sire of Dam:

MD 618/16 TW

Sire:

KD 36/18

Dam:

MD 759/19 0.2

Dam of Sire:

KD 226/11

Dam of Dam:

MD 240/16 TW 0.22

Purchaser: _____ Price: _____

Lot 95

MERRYDOWNS SD 1117/21 TW

EBV	1149	2.39	4.91	0.17	17
	NZTW	WWTgBV	LW8gBV	NLBgBV	EMA Actual
RANK	58/465	190/465	128/465	30/465	143/174

Sire of Sire:

HF K7/16 TW

Sire of Dam:

MD 334/10 TW

Sire:

MD 1100/19 TW

Dam:

MD 209/15 TW 0.13232

Dam of Sire:

MD 80/16

Dam of Dam:

MD 104/12 TW 0.0213

Purchaser: _____ Price: _____

Lot 96

MERRYDOWNS SD 618/21 TW

EBV	1219	3.91	7.13	0.01	20.7
	NZTW	WWTgBV	LW8gBV	NLBgBV	EMA Actual
RANK	32/465	4/465	13/465	412/465	37/174

Sire of Sire:
MD 858/17

Sire of Dam:
WLH 70/16 TW

Sire:
MD 191/19 TW

Dam:
MD 371/18 0.22

Dam of Sire:
MD 675/16

Dam of Dam:
MD 216/16 TW 0.22

Purchaser: _____ Price: _____

Lot 97

MERRYDOWNS SD 511/21 TW

EBV	1286	2.6	5.37	0.19	21.7
	NZTW	WWTgBV	LW8gBV	NLBgBV	EMA Actual
RANK	17/465	146/465	85/465	20/465	16/174

Sire of Sire:
HF K7/16 TW

Sire of Dam:
MD 334/10 TW

Sire:
MD 1100/19 TW

Dam:
MD 274/15 TW 0.22222

Dam of Sire:
MD 80/16

Dam of Dam:
MD 10/10 TW 0.22422232

Purchaser: _____ Price: _____

Lot 98

MERRYDOWNS SD 245/21 TW

EBV	921	2.67	4.59	0.02	21.2
	NZTW	WWTgBV	LW8gBV	NLBgBV	EMA Actual
RANK	165/465	134/465	165/465	403/465	27/174

Sire of Sire:
MD 858/17

Sire of Dam:
MAC 14/13 TW

Sire:
MD 191/19 TW

Dam:
MD 524/18 0.22

Dam of Sire:
MD 675/16

Dam of Dam:
MD 852/11 TW 0.232212

Purchaser: _____ Price: _____

Lot 99

MERRYDOWNS SD 520/21

EBV	974	2.44	4.21	0.1	19
	NZTW	WWTgBV	LW8gBV	NLBgBV	EMA Actual
RANK	140/465	182/465	219/465	164/465	99/174

Sire of Sire:
HF K7/16

Sire of Dam:
MD 338/15 TW

Sire:
MD 1100/19 TW

Dam:
MD 339/18 TW 0.21

Dam of Sire:
MD 80/16

Dam of Dam:
MD 137/14 TW 0.222233

Purchaser: _____ Price: _____

Lot 100

MERRYDOWNS SD 111/21

EBV	1058	2.52	5.1	0	22.4
	NZTW	WWTgBV	LW8gBV	NLBgBV	EMA Actual
RANK	91/465	163/465	110/465	422/465	9/174

Sire of Sire:
HF K7/16 TW

Sire of Dam:
MD 04/15 TW

Sire:
MD 281/19 TW

Dam:
MD 285/17 TR 0.021

Dam of Sire:
MD 533/16

Dam of Dam:
MD 94/14 TW 0.1123

Purchaser: _____ Price: _____

Lot 101

MERRYDOWNS SD 372/21 TW

EBV	1165	3.64	6.4	0.08	21.5
	NZTW	WWTgBV	LW8gBV	NLBgBV	EMA Actual
RANK	52/465	15/465	27/465	249/465	20/174

Sire of Sire:
MD 338/15 TW

Sire of Dam:
MTA 22/15 TW

Sire:
MD 858/17

Dam:
MD 113/17 TW 0.212

Dam of Sire:
MD 297/15 TW

Dam of Dam:
MD 813/11 0.22222

Purchaser: _____ Price: _____

Lot 102

MERRYDOWNS SD 920/21

EBV	685	2.46	5.2	0.08	16.5
	NZTW	WWTgBV	LW8gBV	NLBgBV	EMA Actual
RANK	349/465	177/465	101/465	260/465	156/174

Sire of Sire:
ND216/14

Sire of Dam:
MD 618/16 TW

Sire:
KD 36/18 TW

Dam:
MD 765/19 0.1

Dam of Sire:
KD 226/11

Dam of Dam:
MD 129/13 TW 0.22222

Purchaser: _____ Price: _____

Lot 103

MERRYDOWNS SD 108/21

EBV	1118	2.54	4.65	0.04	18.2
	NZTW	WWTgBV	LW8gBV	NLBgBV	EMA Actual
RANK	67/465	158/465	158/465	355/465	122/174

Sire of Sire:
HF K7/16 TW

Sire of Dam:
WLH 231/16 TW

Sire:
MD 1100/19 TW

Dam:
MD 295/18 TW 0.21

Dam of Sire:
MD 80/16

Dam of Dam:
MD 241/16 TW 0.2222

Purchaser: _____ Price: _____

Lot 104

MERRYDOWNS SD 172/21 TW

EBV	865	3.01	5.32	0.02	17.4
	NZTW	WWTgBV	LW8gBV	NLBgBV	EMA Actual
RANK	208/465	85/465	88/465	402/465	136/174

Sire of Sire:

WD 760/17 TW

Sire of Dam:

MAC 14/13 TW

Sire:

MD 67/19 TW

Dam:

MD 297/15 TW 0.12222

Dam of Sire:

MD 830/17 TW

Dam of Dam:

MD 216/13 TW 0.22

Purchaser: _____ Price: _____

Lot 105

MERRYDOWNS SD 299/21

EBV	612	1.77	2.5	0.1	19.3
	NZTW	WWTgBV	LW8gBV	NLBgBV	EMA Actual
RANK	385/465	339/465	396/465	167/465	82/174

Sire of Sire:

WD 760/17 TW

Sire of Dam:

MD 176/16 TW

Sire:

MD 67/19 TW

Dam:

MD 666/18 TW 0.21

Dam of Sire:

MD 830/17 TW

Dam of Dam:

MD 540/15 TW 0.23231

Purchaser: _____ Price: _____

Lot 106

MERRYDOWNS SD 141/21 TW

EBV	660	2.49	4.76	0.07	20.5
	NZTW	WWTgBV	LW8gBV	NLBgBV	EMA Actual
RANK	367/465	170/465	147/465	293/465	46/174

Sire of Sire:

ND216/14 TW

Sire of Dam:

WD 760/17 TW

Sire:

KD 36/18 TW

Dam:

MD 207/19 0.2

Dam of Sire:

KD 226/11

Dam of Dam:

MD 595/17 TW 0.222

Purchaser: _____ Price: _____

Lot 107

MERRYDOWNS SD 268/21 TW

EBV	707	1.75	3.94	-0.01	17.4
	NZTW	WWTgBV	LW8gBV	NLBgBV	EMA Actual
RANK	337/465	345/465	246/465	431/465	136/174

Sire of Sire:

MD 858/17 TR

Sire of Dam:

MD 435/10 TW

Sire:

MD 191/19 TW

Dam:

MD 122/15 0.21212

Dam of Sire:

MD 675/16

Dam of Dam:

MD 212/10 TR 0.2202312

Purchaser: _____ Price: _____

Lot 108

MERRYDOWNS SD 809/21 TW

EBV	898	2.46	5	0.04	15.9
	NZTW	WWTgBV	LW8gBV	NLBgBV	EMA Actual
RANK	182/465	178/465	116/465	359/465	164/174

Sire of Sire:
HF K7/16 TW

Sire of Dam:
MD 338/15 TW

Sire:
MD 281/19 TW

Dam:
MD 631/18 TR 0.12

Dam of Sire:
MD 533/16

Dam of Dam:
MD 562/15 TW 0.112

Purchaser: _____ Price: _____

Lot 109

MERRYDOWNS SD 598/21 TR

EBV	846	2.13	3.75	0.06	20
	NZTW	WWTgBV	LW8gBV	NLBgBV	EMA Actual
RANK	227/465	249/465	276/465	295/465	62/174

Sire of Sire:
CD 462/16 TW

Sire of Dam:
WD 760/17 TW

Sire:
TRD '09/19 TR

Dam:
MD 680/19 TW 0.3

Dam of Sire:
TRD 125/15

Dam of Dam:
MD 544/17 TW 0.123

Purchaser: _____ Price: _____

Lot 110

MERRYDOWNS SD 220/21

EBV	889	2.19	4.86	0.12	21.5
	NZTW	WWTgBV	LW8gBV	NLBgBV	EMA Actual
RANK	190/465	239/465	134/465	123/465	20/174

Sire of Sire:

MD 618/16 TW

Sire of Dam:

WD 808/17 TW

Sire:

MD 714/19 TW

Dam:

MD 669/19 TW 0.1

Dam of Sire:

MD 216/16 TW

Dam of Dam:

MD 191/17 0.2

Purchaser: _____ Price: _____

Lot 111

MERRYDOWNS SD 642/21 TW

EBV	1378	3.7	6.83	0.09	21.2
	NZTW	WWTgBV	LW8gBV	NLBgBV	EMA Actual
RANK	7/465	13/465	18/465	216/465	27/174

Sire of Sire:

MD 618/16 TW

Sire of Dam:

WLH 70/16 TW

Sire:

MD 714/19 TW

Dam:

MD 56/18 TW 0.22

Dam of Sire:

MD 216/16 TW

Dam of Dam:

MD 136/16 TW 0.1211

Purchaser: _____ Price: _____

Lot 112

MERRYDOWNS SD 451/21 TW

EBV	981	2.52	5.02	0.05	20.6
	NZTW	WWTgBV	LW8gBV	NLBgBV	EMA Actual
RANK	134/465	162/465	114/465	327/465	39/174

Sire of Sire:
HF K7/16 TW

Sire of Dam:
MD 04/15 TW

Sire:
MD 281/19 TW

Dam:
MD 411/17 TR 0.122

Dam of Sire:
MD 533/16

Dam of Dam:
MD 549/14 TW 0.12

Purchaser: _____ Price: _____

Lot 113

MERRYDOWNS SD 557/21 TW

EBV	1063	3.22	6.1	0.12	19.2
	NZTW	WWTgBV	LW8gBV	NLBgBV	EMA Actual
RANK	89/465	55/465	38/465	127/465	87/174

Sire of Sire:
MD 176/16 TW

Sire of Dam:
MAC 14/13 TW

Sire:
MD 395/18 TR

Dam:
MD 686/15 TW 0.10132

Dam of Sire:
MD 465/11 TW

Dam of Dam:
MD 304/12 TR

Purchaser: _____ Price: _____

Lot 114

MERRYDOWNS SD 41/21

EBV	961	2.33	5.02	0.15	24.5
	NZTW	WWTgBV	LW8gBV	NLBgBV	EMA Actual
RANK	148/465	207/465	113/465	58/465	1/174

Sire of Sire:

MD 618/16 TW

Sire of Dam:

MTA 22/15

Sire:

MD 714/19 TW

Dam:

MD 768/17 TW 0.221

Dam of Sire:

MD 216/16 TW

Dam of Dam:

MD 458/12 0.0313

Purchaser: _____ Price: _____

Lot 115

MERRYDOWNS SD 112/21 TW

EBV	792	1.46	2.64	0.07	20
	NZTW	WWTgBV	LW8gBV	NLBgBV	EMA Actual
RANK	273/465	399/465	386/465	273/465	62/174

Sire of Sire:

CD 462/16 TW

Sire of Dam:

HF K7/16 TW

Sire:

TRD 09/19 TR

Dam:

MD 320/19 TW 0.2

Dam of Sire:

TRD 125/15

Dam of Dam:

MD 97/16 .22.2

Purchaser: _____ Price: _____

Lot 116

MERRYDOWNS SD 93/21 TW

EBV	1152	2.98	5.52	0.15	20.8
	NZTW	WWTgBV	LW8gBV	NLBgBV	EMA Actual
RANK	56/465	90/465	72/465	65/465	33/174

Sire of Sire:

MD 176/16 TW

Sire of Dam:

WLH 231/16 TW

Sire:

MD 395/18 TR

Dam:

MD 55/18 TW 0.22

Dam of Sire:

MD 465/11 TW

Dam of Dam:

MD 95/16 TW 0.12

Purchaser: _____ Price: _____

Lot 117

MERRYDOWNS SD 653/21 TW

EBV	1198	3.31	5.38	0.11	20.1
	NZTW	WWTgBV	LW8gBV	NLBgBV	EMA Actual
RANK	38/465	43/465	84/465	132/465	56/174

Sire of Sire:

MD 618/16 TW

Sire of Dam:

WLH 70/16 TW

Sire:

MD 714/19 TW

Dam:

MD 618/18 TW 0.22

Dam of Sire:

MD 216/16 TW

Dam of Dam:

MD 322/16 TW 0.2

Purchaser: _____ Price: _____

Lot 118

MERRYDOWNS SD 1162/21 TR

EBV	1175	2.85	4.91	0.2	18.4
	NZTW	WWTgBV	LW8gBV	NLBgBV	EMA Actual
RANK	47/465	103/465	129/465	14/465	117/174

Sire of Sire:

WD 760/17 TW

Sire of Dam:

MD 04/15 TW

Sire:

MD 67/19 TW

Dam:

MD 10/17 TW 0.333

Dam of Sire:

MD 830/17 TW

Dam of Dam:

MD 685/13 TW 0.1313

Purchaser: _____ Price: _____

Lot 119

MERRYDOWNS SD 480/21

EBV	750	1.83	3.65	-0.01	20
	NZTW	WWTgBV	LW8gBV	NLBgBV	EMA Actual
RANK	306/465	319/465	286/465	433/465	62/174

Sire of Sire:

CD 462/16 TW

Sire of Dam:

MD 858/17

Sire:

TRD '09/19 TR

Dam:

MD 909/19 TW 0.1

Dam of Sire:

TRD 125/15

Dam of Dam:

MD 647/16 0.1212

Purchaser: _____ Price: _____

Lot 120

MERRYDOWNS SD 727/21 TW

EBV	979	2.94	4.27	-0.02	19.5
	NZTW	WWTgBV	LW8gBV	NLBgBV	EMA Actual
RANK	138/465	93/465	210/465	444/465	79/174

Sire of Sire:

MD 338/15 TW

Sire of Dam:

WLH 231/16 TW

Sire:

MD 858/17

Dam:

MD 308/18 TW 0.22

Dam of Sire:

MD 297/15 TW

Dam of Dam:

MD 588/16 TW 0.2

Purchaser: _____ Price: _____

Lot 121

MERRYDOWNS SD 916/21 TW

EBV	1373	3.87	7.28	0.19	18
	NZTW	WWTgBV	LW8gBV	NLBgBV	EMA Actual
RANK	9/465	8/465	9/465	22/465	131/174

Sire of Sire:

MD 618/16 TW

Sire of Dam:

WD 760/17 TW

Sire:

MD 714/19 TW

Dam:

MD 570/19 TW 0.3

Dam of Sire:

MD 216/16 TW

Dam of Dam:

MD 113/17 TW 0.212

Purchaser: _____ Price: _____

Lot 122

MERRYDOWNS SD 65/21 TW

EBV	854	2.04	2.91	0.09	21.2
	NZTW	WWTgBV	LW8gBV	NLBgBV	EMA Actual
RANK	223/465	279/465	364/465	209/465	27/174

Sire of Sire:

WD 760/17 TW

Sire of Dam:

MAC 14/13 TW

Sire:

MD 67/19 TW

Dam:

MD 323/15 TW 0.22122

Dam of Sire:

MD 830/17 TW

Dam of Dam:

MD 200/13 TW 0.22

Purchaser: _____ Price: _____

Lot 123

MERRYDOWNS SD 368/21

EBV	1037	2.8	5.15	-0.04	24.3
	NZTW	WWTgBV	LW8gBV	NLBgBV	EMA Actual
RANK	107/465	110/465	105/465	459/465	2/174

Sire of Sire:

CD 462/16 TW

Sire of Dam:

MD 858/17

Sire:

TRD 09/19 TR

Dam:

MD 435/19 TW 0.1

Dam of Sire:

TRD 125/15

Dam of Dam:

MD 285/14 0.122222

Purchaser: _____ Price: _____

Lot 124**MERRYDOWNS 1889/21 TW**

EBV	2594	3.59	5.46	0.16
	MW+M+W	WWTgBV	LW8gBV	NLBgBV
RANK	9/643	78/643	258/643	398/643

NZWTA Wool Testing Results	Wool Actual	MFD	CofV	Curv
	2.9	36.2	17	59.2

Sire of Sire:

RK 338/17 TW

Sire of Dam:

GP 3/15 TW

Sire:

RK 07/9

Dam:

MD 2202/17 TW 0.212

Dam of Sire:

RK 138/11 TW 0.122223122

Dam of Dam:

MD 1926/14 TW 0.22131

Purchaser: _____ Price: _____



Lot 125	MERRYDOWNS 2302/21 TW			
----------------	-----------------------	--	--	--

EBV	1632	1.86	4.61	0.1
	MW+M+W	WWTgBV	LW8gBV	NLBgBV
RANK	336/643	461/643	358/643	590/643

NZWTA Wool Testing Results	Wool Actual	MFD	CofV	Curv
	2.2	35.8	17.9	48.3

Sire of Sire:
MD 902/16 TW

Sire of Dam:
FAR 40/16 TW

Sire:
MD 1585/18 TW

Dam:
MD 2025/18 TW 0.12

Dam of Sire:
MD 1147/16 TW 0.2

Dam of Dam:
MD 1540/15 0.12

Purchaser: _____ Price: _____

Lot 126	MERRYDOWNS 1750/21 TW			
----------------	-----------------------	--	--	--

EBV	1696	2.54	5.12	0.28
	MW+M+W	WWTgBV	LW8gBV	NLBgBV
RANK	313/643	299/643	293/643	52/643

NZWTA Wool Testing Results	Wool Actual	MFD	CofV	Curv
	2.5	35.4	21.1	67.7

Sire of Sire:
MA 94/16 TW

Sire of Dam:
W 442/13 TW

Sire:
MA 110/19 TW

Dam:
MD 1990/19 TW 0.2

Dam of Sire:
MA 479/14 TW 0.12122

Dam of Dam:
MD 1132/17 TW 0.22

Purchaser: _____ Price: _____

Lot 127	MERRYDOWNS 2428/21 TW
----------------	------------------------------

EBV	2033	2.53	4.43	0.22
	MW+M+W	WWTgBV	LW8gBV	NLBgBV
RANK	168/643	302/643	376/643	191/643

NZWTA Wool Testing Results	Wool Actual	MFD	CofV	Curv
	2.3	37	15.9	48.7

Sire of Sire:
RK 338/17 TW

Sire of Dam:
MD 954/16 TW

Sire:
RK 07/19

Dam:
MD 1819/18 TW 0.22

Dam of Sire:
RK 138/11 TW 0.122223122

Dam of Dam:
MD 2302/13 TW 0.222222

Purchaser: _____ Price: _____

Lot 128	MERRYDOWNS 2596/21 TW
----------------	------------------------------

EBV	1906	0.6	1.82	0.26
	MW+M+W	WWTgBV	LW8gBV	NLBgBV
RANK	224/643	602/643	594/643	82/643

NZWTA Wool Testing Results	Wool Actual	MFD	CofV	Curv
	2.6	40.4	18.8	57.9

Sire of Sire:
MD 1624/17 TW

Sire of Dam:
FAR 40/16 TW

Sire:
MD 1888/19 TW

Dam:
MD 2138/18 TW 0.22

Dam of Sire:
MD 951/16 TW 0.222

Dam of Dam:
MD 835/12 TW 0.22222

Purchaser: _____ Price: _____

Lot 129	MERRYDOWNS 2033/21 TR			
----------------	-----------------------	--	--	--

EBV	1519	2.93	6.36	0.31
	MW+M+W	WWTgBV	LW8gBV	NLBgBV
RANK	390/643	209/643	160/643	20/643

NZWTA Wool Testing Results	Wool Actual	MFD	CofV	Curv
	2.3	34.8	17.4	53

Sire of Sire:
MD 1439/15 TW

Sire of Dam:
MD 2273/15

Sire:
MD 1624/17 TW

Dam:
MD 1642/18 TW 0.23

Dam of Sire:
MD 2643/13 TW 0.223

Dam of Dam:
MD 2378/15 TW 0.2222

Purchaser: _____ Price: _____

Lot 130	MERRYDOWNS 2245/21 TW			
----------------	-----------------------	--	--	--

EBV	2100	2.8	4.65	0.18
	MW+M+W	WWTgBV	LW8gBV	NLBgBV
RANK	143/643	240/643	354/643	340/643

NZWTA Wool Testing Results	Wool Actual	MFD	CofV	Curv
	2.3	36	17.1	54.4

Sire of Sire:
RK 338/17 TW

Sire of Dam:
MD 1043/16 TW

Sire:
RK 07/19

Dam:
MD 1420/18 TW 0.12

Dam of Sire:
RK 138/11 TW 0.122223122

Dam of Dam:
MD 847/15 TW 0.22

Purchaser: _____ Price: _____

Lot 131

MERRYDOWNS 2542/21 TR

EBV	2330	2.36	4.51	0.26
	MW+M+W	WWTgBV	LW8gBV	NLBgBV
RANK	75/643	342/643	366/643	99/643

NZWTA Wool Testing Results	Wool Actual	MFD	CofV	Curv
	2.7	41.3	19.2	62.2

Sire of Sire:

RK 338/17 TW

Sire of Dam:

W 109/13 TW

Sire:

RK 07/19

Dam:

MD 1009/15 TW 0.22223

Dam of Sire:

RK 138/11 TW 0.122223122

Dam of Dam:

MD 1697/13 TW 0.2

Purchaser: _____ Price: _____

Lot 132

MERRYDOWNS 2170/21 TW

EBV	2620	2.75	5.59	0.24
	MW+M+W	WWTgBV	LW8gBV	NLBgBV
RANK	7/643	254/643	239/643	140/643

NZWTA Wool Testing Results	Wool Actual	MFD	CofV	Curv
	2.4	36.7	16.7	45.3

Sire of Sire:

MD 1624/17 TW

Sire of Dam:

WIM 1166/15

Sire:

MD 1888/19 TW

Dam:

MD 1492/18 0.22

Dam of Sire:

MD 951/16 TW 0.222

Dam of Dam:

MD 1884/16 0.122

Purchaser: _____ Price: _____

Lot 133

MERRYDOWNS 1338/21 TW

EBV	1939	2.08	4.27	0.22
	MW+M+W	WWTgBV	LW8gBV	NLBgBV
RANK	210/643	408/643	392/643	207/643

NZWTA Wool Testing Results	Wool Actual	MFD	CofV	Curv
	2.9	41.3	17.7	38.7

Sire of Sire:
MD 802/14 TW

Sire of Dam:
WIM 1166/15

Sire:
EB 60/19 TW

Dam:
MD 2083/19 0.2

Dam of Sire:
EB 110/15 TW 0.22232

Dam of Dam:
MD 2088/15 TW 0.1212

Purchaser: _____ Price: _____

Lot 134

MERRYDOWNS 1416/21 TR

EBV	1557	0.94	2.87	0.35
	MW+M+W	WWTgBV	LW8gBV	NLBgBV
RANK	372/643	585/643	519/643	4/643

NZWTA Wool Testing Results	Wool Actual	MFD	CofV	Curv
	2.5	40.5	22.5	64.4

Sire of Sire:
MD 802/14 TW

Sire of Dam:
MD 1624/17 TW

Sire:
EB 60/19 TW

Dam:
MD 1377/19 TR 0.3

Dam of Sire:
EB 110/15 TW 0.22232

Dam of Dam:
MD 1052/15 TW 0.2331

Purchaser: _____ Price: _____

Lot 135

MERRYDOWNS 2721/21 TW

EBV	2538	2.19	4.09	0.2
	MW+M+W	WWTgBV	LW8gBV	NLBgBV
RANK	17/643	386/643	407/643	256/643

NZWTA Wool Testing Results	Wool Actual	MFD	CofV	Curv
	2.4	34.7	19	57.8

Sire of Sire:

WIM 1166/15

Sire of Dam:

FAR 40/16 TW

Sire:

MD 1529/19 TW

Dam:

MD 2467/18 TR 0.22

Dam of Sire:

MD 1351/17 TW 0.22

Dam of Dam:

MD 2220/13 TW 0.122312

Purchaser: _____ Price: _____

Lot 136

MERRYDOWNS 1581/21

EBV	2231	2.77	4.89	0.28
	MW+M+W	WWTgBV	LW8gBV	NLBgBV
RANK	102/643	245/643	320/643	56/643

NZWTA Wool Testing Results	Wool Actual	MFD	CofV	Curv
	2.5	32.5	22.3	64.7

Sire of Sire:

MA 94/16 TW

Sire of Dam:

WIM 1166/15

Sire:

MA 110/19 TW

Dam:

MD 2144/19 TW 0.1

Dam of Sire:

MA 479/14 TW 0.12122

Dam of Dam:

MD 1034/17 TW 0.23

Purchaser: _____ Price: _____

Lot 137

MERRYDOWNS 2653/21 TW

EBV	1721	3.86	6.93	0.21
	MW+M+W	WWTgBV	LW8gBV	NLBgBV
RANK	307/643	45/643	104/643	220/643

NZWTA Wool Testing Results	Wool Actual	MFD	CofV	Curv
	2.4	33.4	21.9	46.6

Sire of Sire:

MD 2273/15

Sire of Dam:

MD 1043/16 TW

Sire:

MV 07/19 TW

Dam:

MD 2271/18 TR 0.12

Dam of Sire:

WD 57/17 TW 0.22

Dam of Dam:

MD 1202/15 TW 0.23

Purchaser: _____ Price: _____

Lot 138

MERRYDOWNS 1660/21

EBV	1543	3.41	7.78	0.26
	MW+M+W	WWTgBV	LW8gBV	NLBgBV
RANK	382/643	111/643	45/643	101/643

NZWTA Wool Testing Results	Wool Actual	MFD	CofV	Curv
	2.5	36.1	18.9	73.9

Sire of Sire:

MA 94/16 TW

Sire of Dam:

WIM 1166/15

Sire:

MA 110/19 TW

Dam:

MD 1734/19 TW 0.1

Dam of Sire:

MA 479/14 TW 0.12122

Dam of Dam:

MD 1386/17 TW .2.2

Purchaser: _____ Price: _____

Lot 139

MERRYDOWNS 2612/21 TW

EBV	1789	3.83	7.56	0.14
	MW+M+W	WWTgBV	LW8gBV	NLBgBV
RANK	277/643	52/643	56/643	481/643

NZWTA Wool Testing Results	Wool Actual	MFD	CofV	Curv
	2.3	38.2	19.7	50.1

Sire of Sire:

RK 338/17 TW

Sire of Dam:

MD 954/16 TW

Sire:

RK 07/19

Dam:

MD 1142/18 TW 0.12

Dam of Sire:

RK 138/11 TW 0.122223122

Dam of Dam:

MD 1935/14 TW 0.21201

Purchaser: _____ Price: _____

Lot 140

MERRYDOWNS 1514/21 TR

EBV	1805	2.87	5.79	0.15
	MW+M+W	WWTgBV	LW8gBV	NLBgBV
RANK	270/643	221/643	212/643	457/643

NZWTA Wool Testing Results	Wool Actual	MFD	CofV	Curv
	2.7	40.2	16.5	46.1

Sire of Sire:

RK 284/17 TW

Sire of Dam:

WIM 1166/15

Sire:

RK 393/19 TW

Dam:

MD 1526/19 TW 0.3

Dam of Sire:

RK 302/17 TW 0.223

Dam of Dam:

MD 1092/17 TW 0.22

Purchaser: _____ Price: _____

Lot 141	MERRYDOWNS 1462/21 TW			
----------------	-----------------------	--	--	--

EBV	1973	1.83	0.77	0.28
	MW+M+W	WWTgBV	LW8gBV	NLBgBV
RANK	193/643	463/643	625/643	59/643

NZWTA Wool Testing Results	Wool Actual	MFD	CofV	Curv
	2.7	31.7	24.7	43.9

Sire of Sire:
MA 94/16 TW

Sire of Dam:
MD 1465/16

Sire:
MA 110/19 TW

Dam:
MD 1122/19 TW 0.2

Dam of Sire:
MA 479/14 TW 0.12122

Dam of Dam:
MD 1504/17 TW 0.222

Purchaser: _____ Price: _____

Lot 142	MERRYDOWNS 1483/21 TW			
----------------	-----------------------	--	--	--

EBV	1394	3	7.19	0.11
	MW+M+W	WWTgBV	LW8gBV	NLBgBV
RANK	439/643	192/643	81/643	564/643

NZWTA Wool Testing Results	Wool Actual	MFD	CofV	Curv
	3	36.7	18.7	42.9

Sire of Sire:
RK 284/17 TW

Sire of Dam:
MD 1292/14 TW

Sire:
RK 393/19 TW

Dam:
MD 1324/19 TW 0.2

Dam of Sire:
RK 302/17 TW 0.223

Dam of Dam:
MD 1342/15 TW 0.1223

Purchaser: _____ Price: _____

Lot 143	MERRYDOWNS 1542/21 TR			
----------------	-----------------------	--	--	--

EBV	1315	2.97	6.58	0.22
	MW+M+W	WWTgBV	LW8gBV	NLBgBV
RANK	466/643	201/643	141/643	208/643

NZWTA Wool Testing Results	Wool Actual	MFD	CofV	Curv
	2.7	36.9	18.5	38.9

Sire of Sire:
MA 406/17 TW

Sire of Dam:
WIM 1166/15

Sire:
MA 815/19 TW

Dam:
MD 1117/19 TW 0.3

Dam of Sire:
MA 83/13 TW 0.12222

Dam of Dam:
MD 1356/16 TW 0.1233

Purchaser: _____ Price: _____

Lot 144	MERRYDOWNS 1765/21 TW			
----------------	-----------------------	--	--	--

EBV	2275	3.76	6.95	0.27
	MW+M+W	WWTgBV	LW8gBV	NLBgBV
RANK	91/643	60/643	101/643	74/643

NZWTA Wool Testing Results	Wool Actual	MFD	CofV	Curv
	2.4	36.2	17.1	50.9

Sire of Sire:
WIM 1166/15

Sire of Dam:
MD 1519/14 TW

Sire:
MD 1529/19 TW

Dam:
MD 2150/15 TR 0.32332

Dam of Sire:
MD 1351/17 TW 0.22

Dam of Dam:
MD 1446/09 TW 0.12223

Purchaser: _____ Price: _____

Lot 145	MERRYDOWNS 1901/21 TW			
----------------	------------------------------	--	--	--

EBV	2534	3.04	7.56	0.21
	MW+M+W	WWTgBV	LW8gBV	NLBgBV
RANK	20/643	181/643	57/643	228/643

NZWTA Wool Testing Results	Wool Actual	MFD	CofV	Curv
	2.7	37.6	19.1	66.3

Sire of Sire:
WIM 289/13 TW

Sire of Dam:
FAR 40/16 TW

Sire:
WIM 1166/15

Dam:
MD 1991/18 TW 0.22

Dam of Sire:
WIM 850/13 TW 11110

Dam of Dam:
MD 1169/13 TW 0.222222

Purchaser: _____ Price: _____

Lot 146	MERRYDOWNS 1346/21			
----------------	---------------------------	--	--	--

EBV	1193	2.03	3.6	0.03
	MW+M+W	WWTgBV	LW8gBV	NLBgBV
RANK	507/643	420/643	459/643	638/643

NZWTA Wool Testing Results	Wool Actual	MFD	CofV	Curv
	2.4	33.4	19.5	55.4

Sire of Sire:
RK 284/17 TW

Sire of Dam:
HE 321/17 TW

Sire:
RK 393/19 TW

Dam:
MD 1905/19 TW 0.1

Dam of Sire:
RK 302/17 TW 0.223

Dam of Dam:
MD 1366/16 TW 0.2222

Purchaser: _____ Price: _____

Lot 147	MERRYDOWNS 2483/21 TW
----------------	------------------------------

EBV	2178	2.3	1.95	0.2
	MW+M+W	WWTgBV	LW8gBV	NLBgBV
RANK	115/643	358/643	586/643	289/643

NZWTA Wool Testing Results	Wool Actual	MFD	CofV	Curv
	2.5	37.4	19.6	58.5

Sire of Sire:
RK 338/17 TW

Sire of Dam:
MD 2273/15

Sire:
RK 07/19

Dam:
MD 1598/18 TR 0.12

Dam of Sire:
RK 138/11 TW 0.122223122

Dam of Dam:
MD 2278/15 0.232

Purchaser: _____ Price: _____

Lot 148	MERRYDOWNS 1764/21 TW
----------------	------------------------------

EBV	2557	3.84	5.95	0.27
	MW+M+W	WWTgBV	LW8gBV	NLBgBV
RANK	15/643	51/643	191/643	74/643

NZWTA Wool Testing Results	Wool Actual	MFD	CofV	Curv
	2.5	35.7	18.7	54

Sire of Sire:
WIM 1166/15

Sire of Dam:
MD 1519/14 TW

Sire:
MD 1529/19 TW

Dam:
MD 2150/15 TR 0.32332

Dam of Sire:
MD 1351/17 TW 0.22

Dam of Dam:
MD 1446/09 TW 0.12223

Purchaser: _____ Price: _____

Lot 149

MERRYDOWNS 2505/21 TR

EBV	2327	2.97	6.41	0.29
	MW+M+W	WWTgBV	LW8gBV	NLBgBV
RANK	77/643	202/643	156/643	45/643

NZWTA Wool Testing Results	Wool Actual	MFD	CofV	Curv
	2.4	37.2	20.5	59.2

Sire of Sire:

RK 338/17 TW

Sire of Dam:

W 442/13 TW

Sire:

RK 07/19

Dam:

MD 1815/18 TR 0.23

Dam of Sire:

RK 138/11 TW 0.122223122

Dam of Dam:

MD 1004/14 TW 0.22323

Purchaser: _____ Price: _____

Lot 150

MERRYDOWNS 2018/21 TW

EBV	1593	2.01	5.59	0.25
	MW+M+W	WWTgBV	LW8gBV	NLBgBV
RANK	358/643	425/643	240/643	121/643

NZWTA Wool Testing Results	Wool Actual	MFD	CofV	Curv
	2.5	36	21	57.8

Sire of Sire:

W 442/13 TW

Sire of Dam:

FAR 40/16 TW

Sire:

MD 1149/18 TW

Dam:

MD 1981/18 TR 0.22

Dam of Sire:

MD 1416/16 0.2222

Dam of Dam:

MD 1849/15 TW 0.2323

Purchaser: _____ Price: _____

Lot 151	MERRYDOWNS 2252/21 TW			
----------------	-----------------------	--	--	--

EBV	1742	3.39	7.23	0.17
	MW+M+W	WWTgBV	LW8gBV	NLBgBV
RANK	295/643	116/643	78/643	373/643

NZWTA Wool Testing Results	Wool Actual	MFD	CofV	Curv
	2.4	38.4	19.4	50.7

Sire of Sire:
RK 338/17 TW

Sire of Dam:
MD 1043/16 TW

Sire:
RK 07/19

Dam:
MD 1518/18 TW 0.12

Dam of Sire:
RK 138/11 TW 0.122223122

Dam of Dam:
MD 1960/13 TW 0.1222

Purchaser: _____ Price: _____

Lot 152	MERRYDOWNS 2081/21 TR			
----------------	-----------------------	--	--	--

EBV	2683	2.65	5.37	0.26
	MW+M+W	WWTgBV	LW8gBV	NLBgBV
RANK	4/643	271/643	268/643	93/643

NZWTA Wool Testing Results	Wool Actual	MFD	CofV	Curv
	2.9	42.3	19.8	58.7

Sire of Sire:
MD 1624/17 TW

Sire of Dam:
WIM 1166/15

Sire:
MD 1888/19 TW

Dam:
MD 1082/17 TW 0.223

Dam of Sire:
MD 951/16 TW 0.222

Dam of Dam:
MD 1826/14 TW 0.121

Purchaser: _____ Price: _____

Lot 153

MERRYDOWNS 1888/21 TW

EBV	2392	3.84	7.3	0.16
	MW+M+W	WWTgBV	LW8gBV	NLBgBV
RANK	52/643	50/643	73/643	398/643

NZWTA Wool Testing Results	Wool Actual	MFD	CofV	Curv
	3.2	41.3	18.6	48.1

Sire of Sire:

RK 338/17 TW

Sire of Dam:

GP 3/15 TW

Sire:

RK 07/19

Dam:

MD 2202/17 TW 0.212

Dam of Sire:

RK 138/11 TW 0.122223122 MD 1926/14 TW 0.22131

Dam of Dam:

Purchaser: _____ Price: _____



Lot 154

MERRYDOWNS SD 1056/21

EBV	950	3.56	6.5	-0.03	19.6
	NZTW	WWTgBV	LW8gBV	NLBgBV	EMA Actual
RANK	154/465	19/465	25/465	453/465	76/174

Sire of Sire:
ND216/14

Sire of Dam:
MD 858/17

Sire:
KD 36/18 TW

Dam:
MD 451/19 0.1

Dam of Sire:
KD 226/11

Dam of Dam:
MD 335/16 0.2221

Purchaser: _____ Price: _____

Lot 155

MERRYDOWNS SD 906/21 TW

EBV	841	2.29	4.26	0.03	17
	NZTW	WWTgBV	LW8gBV	NLBgBV	EMA Actual
RANK	231/465	215/465	212/465	383/465	143/174

Sire of Sire:
HF K7/16 TW

Sire of Dam:
MAC 14/13 TW

Sire:
MD 281/19 TW

Dam:
MD 25/16 TR 0.2222

Dam of Sire:
MD 533/16

Dam of Dam:
MD 249/14 TW 0.221121

Purchaser: _____ Price: _____

Lot 156

MERRYDOWNS SD 1190/21

EBV	857	2.85	4.11	0.02	19.8
	NZTW	WWTgBV	LW8gBV	NLBgBV	EMA Actual
RANK	218/465	104/465	232/465	406/465	67/174

Sire of Sire:
ND 216/14

Sire of Dam:
MD 858/17

Sire:
KD 36/18 TW

Dam:
MD 883/19 0.1

Dam of Sire:
KD 226/11

Dam of Dam:
MD 392/14 0.222222

Purchaser: _____ Price: _____

Lot 157

MERRYDOWNS SD 659/21 TW

EBV	1130	2.75	5.42	0.13	20.4
	NZTW	WWTgBV	LW8gBV	NLBgBV	EMA Actual
RANK	64/465	117/465	80/465	93/465	47/174

Sire of Sire:
MD 618/16 TW

Sire of Dam:
MTA 22/15

Sire:
MD 714/19 TW

Dam:
MD 444/17 TW 0.122

Dam of Sire:
MD 216/16 TW

Dam of Dam:
MD 547/11 0.232223

Purchaser: _____ Price: _____

Lot 158

MERRYDOWNS SD 330/21

EBV	669	1.22	2.84	0.06	20.2
	NZTW	WWTgBV	LW8gBV	NLBgBV	EMA Actual
RANK	358/465	424/465	371/465	312/465	53/174

Sire of Sire:

MD 618/16 TW

Sire of Dam:

CD 279/12 TR

Sire:

MD 714/19 TW

Dam:

MD 193/15 TW 0.21121

Dam of Sire:

MD 216/16 TW

Dam of Dam:

MD 140/10 .2.1313

Purchaser: _____ Price: _____

Lot 159

MERRYDOWNS SD 46/21 TW

EBV	1151	3.01	5.18	0.1	22.4
	NZTW	WWTgBV	LW8gBV	NLBgBV	EMA Actual
RANK	57/465	84/465	102/465	180/465	9/174

Sire of Sire:

MD 176/16 TW

Sire of Dam:

WLH 70/16 TW

Sire:

MD 643/19 TW

Dam:

MD 31/18 0.22

Dam of Sire:

MD 778/16 TW

Dam of Dam:

MD 172/16 TW 0.2

Purchaser: _____ Price: _____

Lot 160

MERRYDOWNS SD 458/21 TW

EBV	955	2.04	3.83	0.14	19.1
	NZTW	WWTgBV	LW8gBV	NLBgBV	EMA Actual
RANK	151/465	280/465	264/465	78/465	95/174

Sire of Sire:
HF K7/16 TW

Sire of Dam:
MD 435/10 TW

Sire:
MD 1100/19 TW

Dam:
MD 492/14 TW 0.122222

Dam of Sire:
MD 80/16

Dam of Dam:
MD 150/11 TR 0.22222

Purchaser: _____ Price: _____

Lot 161

MERRYDOWNS SD 215/21 TW

EBV	876	2.75	5.67	0.11	22.3
	NZTW	WWTgBV	LW8gBV	NLBgBV	EMA Actual
RANK	199/465	118/465	62/465	144/465	13/174

Sire of Sire:
ND216/14 TW

Sire of Dam:
HF K7/16 TW

Sire:
KD 36/18 TW

Dam:
MD 336/19 0.2

Dam of Sire:
KD 226/11

Dam of Dam:
MD 142/16 0.223

Purchaser: _____ Price: _____

Lot 162

MERRYDOWNS SD 1040/21 TW

EBV	962	3.86	7.24	0.05	17.9
	NZTW	WWTgBV	LW8gBV	NLBgBV	EMA Actual
RANK	146/465	10/465	10/465	334/465	132/174

Sire of Sire:

ND216/14 TW

Sire of Dam:

MD 858/17 TW

Sire:

KD 36/18 TW

Dam:

MD 293/19 0.2

Dam of Sire:

KD 226/11

Dam of Dam:

MD 120/14 0.222232

Purchaser: _____ Price: _____

Lot 163

MERRYDOWNS SD 1091/21

EBV	858	2.87	6.43	0.09	16.8
	NZTW	WWTgBV	LW8gBV	NLBgBV	EMA Actual
RANK	217/465	98/465	26/465	225/465	151/174

Sire of Sire:

ND216/14

Sire of Dam:

HF K7/16 TW

Sire:

KD 36/18 TW

Dam:

MD 749/19 0.1

Dam of Sire:

KD 226/11

Dam of Dam:

MD 673/15 0.122

Purchaser: _____ Price: _____

Lot 164

MERRYDOWNS SD 1025/21 TW

EBV	877	3.04	5.22	0.09	19.3
	NZTW	WWTgBV	LW8gBV	NLBgBV	EMA Actual
RANK	198/465	78/465	99/465	197/465	82/174

Sire of Sire:

ND216/14 TW

Sire of Dam:

MD 618/16 TW

Sire:

KD 36/18 TW

Dam:

MD 162/19 0.2

Dam of Sire:

KD 226/11

Dam of Dam:

MD 295/13 TW 0.233123

Purchaser: _____ Price: _____

Lot 165

MERRYDOWNS SD 528/21 TW

EBV	1253	3.15	4.86	0.12	19.5
	NZTW	WWTgBV	LW8gBV	NLBgBV	EMA Actual
RANK	24/465	63/465	132/465	120/465	79/174

Sire of Sire:

MD 618/16 TW

Sire of Dam:

WLH 70/16 TW

Sire:

MD 714/19 TW

Dam:

MD 89/18 TW 0.22

Dam of Sire:

MD 216/16 TW

Dam of Dam:

MD 235/16 TW 0.222

Purchaser: _____ Price: _____

Lot 166

MERRYDOWNS SD 12/21 TW

EBV	756	1.85	3.76	0.18	18.2
	NZTW	WWTgBV	LW8gBV	NLBgBV	EMA Actual
RANK	302/465	315/465	275/465	27/465	122/174

Sire of Sire:

MD 618/16 TW

Sire of Dam:

WD 760/17 TW

Sire:

MD 714/19 TW

Dam:

MD 17/19 TW 0.2

Dam of Sire:

MD 216/16 TW

Dam of Dam:

MD 513/17 TW 0.22

Purchaser: _____ Price: _____

Lot 167

MERRYDOWNS SD 280/21

EBV	644	1.71	1.89	0.03	20.3
	NZTW	WWTgBV	LW8gBV	NLBgBV	EMA Actual
RANK	374/465	356/465	431/465	390/465	52/174

Sire of Sire:

WD 760/17 TW

Sire of Dam:

MAC 14/13 TW

Sire:

MD 67/19 TW

Dam:

MD 46/16 TW 0.2221

Dam of Sire:

MD 830/17 TW

Dam of Dam:

MD 319/14 TW 0.12212

Purchaser: _____ Price: _____

Lot 168

MERRYDOWNS SD 190/21 TW

EBV	913	2.82	5.38	0.1	19.8
	NZTW	WWTgBV	LW8gBV	NLBgBV	EMA Actual
RANK	171/465	107/465	82/465	175/465	67/174

Sire of Sire:

ND216/14 TW

Sire of Dam:

HF K7/16 TW

Sire:

KD 36/18 TW

Dam:

MD 576/19 0.2

Dam of Sire:

KD 226/11

Dam of Dam:

MD 690/16 0.2212

Purchaser: _____ Price: _____

Lot 169

MERRYDOWNS SD 337/21 TW

EBV	1167	2.57	5.71	0.15	19
	NZTW	WWTgBV	LW8gBV	NLBgBV	EMA Actual
RANK	50/465	152/465	55/465	63/465	99/174

Sire of Sire:

HF K7/16 TW

Sire of Dam:

MD 338/15 TW

Sire:

MD 1100/19 TW

Dam:

MD 468/17 TW 0.222

Dam of Sire:

MD 80/16

Dam of Dam:

MD 423/14 TW 0.12

Purchaser: _____ Price: _____

Lot 170

MERRYDOWNS SD 381/21 TW

EBV	1283	3.43	7.32	0	22.6
	NZTW	WWTgBV	LW8gBV	NLBgBV	EMA Actual
RANK	19/465	28/465	8/465	420/465	6/174

Sire of Sire:
MD 858/17

Sire of Dam:
MD 04/15 TW

Sire:
MD 191/19 TW

Dam:
MD 163/16 0.1222

Dam of Sire:
MD 675/16

Dam of Dam:
MD 561/10 TW 0.12422

Purchaser: _____ Price: _____

Lot 171

MERRYDOWNS SD 539/21 TR

EBV	1103	3.2	7.18	0.1	19.7
	NZTW	WWTgBV	LW8gBV	NLBgBV	EMA Actual
RANK	71/465	56/465	11/465	165/465	70/174

Sire of Sire:
MD 858/17

Sire of Dam:
MD 176/16 TW

Sire:
MD 191/19 TW

Dam:
MD 928/18 TW 0.23

Dam of Sire:
MD 675/16

Dam of Dam:
MD 433/14 TW 0.2122

Purchaser: _____ Price: _____

Lot 172

MERRYDOWNS SD 674/21 TW

EBV	904	1.99	4.36	0.16	20.2
	NZTW	WWTgBV	LW8gBV	NLBgBV	EMA Actual
RANK	179/465	293/465	188/465	43/465	53/174

Sire of Sire:

MD 618/16 TW

Sire of Dam:

MTA 22/15

Sire:

MD 714/19 TW

Dam:

MD 607/17 TW 0.122

Dam of Sire:

MD 216/16 TW

Dam of Dam:

MD 404/12 0.3222313

Purchaser: _____ Price: _____

Lot 173

MERRYDOWNS SD 754/21 TW

EBV	988	2.86	5.63	0.05	20.8
	NZTW	WWTgBV	LW8gBV	NLBgBV	EMA Actual
RANK	126/465	102/465	65/465	328/465	33/174

Sire of Sire:

WD 760/17 TW

Sire of Dam:

MAC 14/13 TW

Sire:

MD 67/19 TW

Dam:

MD 77/16 TW 0.2222

Dam of Sire:

MD 830/17 TW

Dam of Dam:

MD 157/14 TW 0.11223

Purchaser: _____ Price: _____

Lot 174

MERRYDOWNS SD 125/21

EBV	685	3.05	6.15	-0.03	16.9
	NZTW	WWTgBV	LW8gBV	NLBgBV	EMA Actual
RANK	350/465	77/465	35/465	456/465	150/174

Sire of Sire:
ND216/14

Sire of Dam:
MD 858/17

Sire:
KD 36/18 TW

Dam:
MD 822/19 0.1

Dam of Sire:
KD 226/11

Dam of Dam:
MD 672/15 0.222

Purchaser: _____ Price: _____

Lot 175

MERRYDOWNS SD 484/21

EBV	1342	3.22	5.94	0.08	19.1
	NZTW	WWTgBV	LW8gBV	NLBgBV	EMA Actual
RANK	11/465	53/465	42/465	235/465	95/174

Sire of Sire:
HF K7/16 TW

Sire of Dam:
MD 858/17

Sire:
MD 1100/19 TW

Dam:
MD 817/19 TW 0.1

Dam of Sire:
MD 80/16

Dam of Dam:
MD 578/14 0.22122

Purchaser: _____ Price: _____

Lot 176

MERRYDOWNS SD 682/21 TW

EBV	893	3.3	5.3	0.08	18.9
	NZTW	WWTgBV	LW8gBV	NLBgBV	EMA Actual
RANK	185/465	44/465	90/465	266/465	104/174

Sire of Sire:

ND216/14 TW

Sire of Dam:

WD 760/17 TW

Sire:

KD 36/18 TW

Dam:

MD 66/19 0.2

Dam of Sire:

KD 226/11

Dam of Dam:

MD 115/17 TW 0.22

Purchaser: _____ Price: _____

Lot 177

MERRYDOWNS SD 1060/21

EBV	1188	3.34	5.37	0.04	18.9
	NZTW	WWTgBV	LW8gBV	NLBgBV	EMA Actual
RANK	42/465	39/465	86/465	353/465	104/174

Sire of Sire:

MD 176/16 TW

Sire of Dam:

WLH 231/16 TW

Sire:

MD 395/18 TR

Dam:

MD 68/18 TW 0.11

Dam of Sire:

MD 465/11 TW

Dam of Dam:

MD 127/16 TW 0.112

Purchaser: _____ Price: _____

Lot 178

MERRYDOWNS SD 540/21 TR

EBV	955	2.78	5.1	0.03	17.4
	NZTW	WWTgBV	LW8gBV	NLBgBV	EMA Actual
RANK	143/465	108/465	103/465	369/465	1/174

Sire of Sire:

WD 760/17 TW

Sire of Dam:

MAC 14/13 TW

Sire:

MD 67/19 TW

Dam:

MD 22/15 TW 0.13113

Dam of Sire:

MD 830/17 TW

Dam of Dam:

MD 397/13 TW 0.2

Purchaser: _____ Price: _____

Lot 179

MERRYDOWNS SD 993/21 TW

EBV	986	2.5	4.25	0.09	19.7
	NZTW	WWTgBV	LW8gBV	NLBgBV	EMA Actual
RANK	127/465	169/465	214/465	203/465	70/174

Sire of Sire:

WD 760/17 TW

Sire of Dam:

MD 618/16 TW

Sire:

MD 67/19 TW

Dam:

MD 754/18 TW 0.12

Dam of Sire:

MD 830/17 TW

Dam of Dam:

MD 661/15 TW 0.23133

Purchaser: _____ Price: _____

Lot 180

MERRYDOWNS SD 983/21 TW

EBV	1285	2.6	4.14	0.12	20.2
	NZTW	WWTgBV	LW8gBV	NLBgBV	EMA Actual
RANK	18/465	144/465	226/465	119/465	53/174

Sire of Sire:
HF K7/16 TW

Sire of Dam:
MD 04/15 TW

Sire:
MD 1100/19 TW

Dam:
MD 896/17 TW 0.132

Dam of Sire:
MD 80/16

Dam of Dam:
MD 282/14 TW 0.211

Purchaser: _____ Price: _____

Lot 181

MERRYDOWNS SD 900/21 TW

EBV	842	3.42	6.76	0.07	18.2
	NZTW	WWTgBV	LW8gBV	NLBgBV	EMA Actual
RANK	230/465	30/465	19/465	283/465	122/174

Sire of Sire:
ND216/14

Sire of Dam:
WD 760/17 TW

Sire:
KD 36/18 TW

Dam:
MD 460/19 TW 0.2

Dam of Sire:
KD 226/11

Dam of Dam:
MD 952/17 TW 0.222

Purchaser: _____ Price: _____

Lot 182

MERRYDOWNS SD 04/21 TW

EBV	817	1.84	3.77	0.1	17
	NZTW	WWTgBV	LW8gBV	NLBgBV	EMA Actual
RANK	254/465	317/465	273/465	159/465	143/174

Sire of Sire:
HF K7/16 TW

Sire of Dam:
MAC 14/13 TW

Sire:
MD 281/19 TW

Dam:
MD 49/16 TR 0.2222

Dam of Sire:
MD 533/16

Dam of Dam:
MD 579/14 TW .223.3

Purchaser: _____ Price: _____

Lot 183

MERRYDOWNS SD 31/21 TW

EBV	738	2.1	4.66	0.09	17
	NZTW	WWTgBV	LW8gBV	NLBgBV	EMA Actual
RANK	316/465	260/465	155/465	223/465	143/174

Sire of Sire:
HF K7/16 TW

Sire of Dam:

Sire:
MD 281/19 TW

Dam:
MD 861/16 TR 0.2222

Dam of Sire:
MD 533/16

Dam of Dam:

Purchaser: _____ Price: _____

Lot 184	MERRYDOWNS 2471/21 TR
----------------	-----------------------

EBV	2073	2.06	3.52	0.25
	MW+M+W	WWTgBV	LW8gBV	NLBgBV
RANK	152/643	412/643	469/643	108/643

NZWTA Wool Testing Results	Wool Actual	MFD	CofV	Curv
	2.8	41.9	21.2	50.1

Sire of Sire:
RK 338/17 TW

Sire of Dam:
MD 1043/16 TW

Sire:
RK 07/19

Dam:
MD 1177/18 TW 0.23

Dam of Sire:
RK 138/11 TW 0.122223122

Dam of Dam:
MD 901/16 0.2232

Purchaser: _____ Price: _____

Lot 185	MERRYDOWNS 1534/21 TW
----------------	-----------------------

EBV	1849	1.71	3.11	0.13
	MW+M+W	WWTgBV	LW8gBV	NLBgBV
RANK	254/643	486/643	508/643	526/643

NZWTA Wool Testing Results	Wool Actual	MFD	CofV	Curv
	2.9	34.6	20.9	47.5

Sire of Sire:
RK 284/17 TW

Sire of Dam:
FAR 40/16 TW

Sire:
RK 393/19 TW

Dam:
MD 1557/19 TR 0.2

Dam of Sire:
RK 302/17 TW 0.223

Dam of Dam:
MD 1373/13 TW 0.212133

Purchaser: _____ Price: _____

Lot 186	MERRYVALE 96/21			
----------------	-----------------	--	--	--

EBV	1455	2.03	2.23	0.1
	MW+M+W	WWTgBV	LW8gBV	NLBgBV
RANK	71/109	77/109	93/109	104/109

NZWTA Wool Testing Results	Wool Actual	MFD	CofV	Curv
	2.3	35.1	20.3	51.8

Sire of Sire:
MA 406/17 TW

Sire of Dam:
MD 1537/15 TW

Sire:
MA 815/19 TW

Dam:
MV 127/19 TW 0.1

Dam of Sire:
MA 83/13 TW 0.12222

Dam of Dam:
WD 342/17 TR 0.2

Purchaser: _____ Price: _____

Lot 187	MERRYDOWNS 1283/21 TW			
----------------	-----------------------	--	--	--

EBV	1091	2.4	6.19	0.12
	MW+M+W	WWTgBV	LW8gBV	NLBgBV
RANK	541/643	337/643	172/643	554/643

NZWTA Wool Testing Results	Wool Actual	MFD	CofV	Curv
	2.6	36.8	21.5	73

Sire of Sire:
MD 2273/15

Sire of Dam:
KTI G197/14

Sire:
MD 1897/19 TW

Dam:
KTI D368/18 TW 0.12

Dam of Sire:
MD 1053/17 TW 0.223

Dam of Dam:
KTI H28/16 0.22121

Purchaser: _____ Price: _____

Lot 188	MERRYDOWNS 2119/21 TR			
----------------	-----------------------	--	--	--

EBV	2424	2.14	3.94	0.3
	MW+M+W	WWTgBV	LW8gBV	NLBgBV
RANK	46/643	382/643	414/643	36/643

NZWTA Wool Testing Results	Wool Actual	MFD	CofV	Curv
	2.3	37.4	20.6	48.5

Sire of Sire:
MD 1624/17 TW

Sire of Dam:
KT 1312/13 TW

Sire:
MD 1888/19 TW

Dam:
MD 1557/15 TR 0.22233

Dam of Sire:
MD 951/16 TW 0.222

Dam of Dam:
OF 122/11 0.22323

Purchaser: _____ Price: _____

Lot 189	MERRYDOWNS 2451/21			
----------------	--------------------	--	--	--

EBV	2054	2.31	5.45	0.21
	MW+M+W	WWTgBV	LW8gBV	NLBgBV
RANK	159/643	355/643	260/643	218/643

NZWTA Wool Testing Results	Wool Actual	MFD	CofV	Curv
	2.7	34.6	20.4	50

Sire of Sire:
MD 1439/15 TW

Sire of Dam:
MD 921/13 TW

Sire:
MD 1624/17 TW

Dam:
MD 1999/15 TW 0.22131

Dam of Sire:
MD 2643/13 TW 0.223

Dam of Dam:
TOT 577/10 TW 0.2222222

Purchaser: _____ Price: _____

Lot 190	MERRYDOWNS 1603/21			
----------------	--------------------	--	--	--

EBV	1084	1.4	5.5	0.27
	MW+M+W	WWTgBV	LW8gBV	NLBgBV
RANK	543/643	530/643	254/643	73/643

NZWTA Wool Testing Results	Wool Actual	MFD	CofV	Curv
	2.2	37.3	18	41.1

Sire of Sire:
MD 802/14 TW

Sire of Dam:
MD 1624/17 TW

Sire:
EB 60/19 TW

Dam:
MD 1889/19 TW 0.1

Dam of Sire:
EB 110/15 TW 0.22232

Dam of Dam:
MD 951/16 TW 0.222

Purchaser: _____ Price: _____

Lot 191	MERRYDOWNS 2708/21 TW			
----------------	-----------------------	--	--	--

EBV	2025	4.4	8.37	0.14
	MW+M+W	WWTgBV	LW8gBV	NLBgBV
RANK	174/643	18/643	28/643	493/643

NZWTA Wool Testing Results	Wool Actual	MFD	CofV	Curv
	2.8	36.5	17.4	41.6

Sire of Sire:
RK 338/17 TW

Sire of Dam:
MD 1378/14 TW

Sire:
RK 07/19

Dam:
MD 1879/16 TR 0.2212

Dam of Sire:
RK 138/11 TW 0.122223122

Dam of Dam:
MD 2138/13 TW 0.2331

Purchaser: _____ Price: _____

Lot 192

MERRYDOWNS 1759/21 TR

EBV	1950	2	3	0.12
	MW+M+W	WWTgBV	LW8gBV	NLBgBV
RANK	206/643	632/643	643/643	552/643

NZWTA Wool Testing Results	Wool Actual	MFD	CofV	Curv
	2.8	40.4	17	52.3

Sire of Sire:

RK 338/17 TW

Sire of Dam:

MD 960/13 TW

Sire:

RK 07/19

Dam:

MD 1899/16 0.12333

Dam of Sire:

RK 138/11 TW 0.122223122

Dam of Dam:

MD 2236/13 0.122222

Purchaser: _____ Price: _____

Lot 193

MERRYDOWNS 2259/21 TW

EBV	1405	4.4	8.3	0.17
	MW+M+W	WWTgBV	LW8gBV	NLBgBV
RANK	435/643	17/643	32/643	378/643

NZWTA Wool Testing Results	Wool Actual	MFD	CofV	Curv
	2	38	15.6	56

Sire of Sire:

MD 2273/15

Sire of Dam:

MD 1439/15 TW

Sire:

MV 07/19 TW

Dam:

MD 1579/17 TW 0.222

Dam of Sire:

WD 57/17 TW 0.22

Dam of Dam:

MD 2335/13 TW .1222.12

Purchaser: _____ Price: _____

Lot 194	MERRYDOWNS 2087/21 TW
----------------	------------------------------

EBV	2281	1.28	2.3	0.25
	MW+M+W	WWTgBV	LW8gBV	NLBgBV
RANK	90/643	552/643	573/643	113/643

NZWTA Wool Testing Results	Wool Actual	MFD	CofV	Curv
	2.4	34.3	22.7	49.8

Sire of Sire:
WIM 289/13 TW

Sire of Dam:
W 442/13 TW

Sire:
WIM 1166/15

Dam:
MD 1913/18 TR 0.22

Dam of Sire:
WIM 850/13 TW 11110

Dam of Dam:
MD 1835/13 TW 0.2123

Purchaser: _____ Price: _____

Lot 195	MERRYDOWNS 2121/21 TW
----------------	------------------------------

EBV	2379	2.63	3.51	0.16
	MW+M+W	WWTgBV	LW8gBV	NLBgBV
RANK	59/643	277/643	474/643	407/643

NZWTA Wool Testing Results	Wool Actual	MFD	CofV	Curv
	2.4	37.6	20.4	51.5

Sire of Sire:
WIM 1166/15

Sire of Dam:
MD 1986/11 TW

Sire:
MD 1529/19 TW

Dam:
MD 1142/14 TW 0.222212

Dam of Sire:
MD 1351/17 TW 0.22

Dam of Dam:
TOT 1217/09 TW 0.22222223

Purchaser: _____ Price: _____

Lot 196

MERRYDOWNS 2267/21 TW

EBV	1845	2.25	5.63	0.22
	MW+M+W	WWTgBV	LW8gBV	NLBgBV
RANK	255/643	368/643	232/643	198/643

NZWTA Wool Testing Results	Wool Actual	MFD	CofV	Curv
	2.5	37.3	16.7	48.7

Sire of Sire:

RK 338/17 TW

Sire of Dam:

W 442/13 TW

Sire:

RK 07/19

Dam:

MD 1562/18 TW 0.22

Dam of Sire:

RK 138/11 TW 0.122223122

Dam of Dam:

MD 2093/12 TW 0.22222

Purchaser: _____ Price: _____

Lot 197

MERRYVALE 81/21 TW

EBV	1535	4.13	7.4	0.27
	MW+M+W	WWTgBV	LW8gBV	NLBgBV
RANK	63/109	11/109	17/109	17/109

NZWTA Wool Testing Results	Wool Actual	MFD	CofV	Curv
	2.2	32.4	21.6	70.1

Sire of Sire:

MA 94/16 TW

Sire of Dam:

MD 2273/15

Sire:

MA 110/19 TW

Dam:

MV 93/19 TW 0.2

Dam of Sire:

MA 479/14 TW 0.12122

Dam of Dam:

WD 453/17 TW 0.22

Purchaser: _____ Price: _____

Lot 198	MERRYVALE 217/21 TW			
----------------	---------------------	--	--	--

EBV	2054	2.39	3.45	0.21
	MW+M+W	WWTgBV	LW8gBV	NLBgBV
RANK	28/109	62/109	79/109	48/109

NZWTA Wool Testing Results	Wool Actual	MFD	CofV	Curv
	2.2	37.1	17.8	60.2

Sire of Sire:

MD 2273/15

Sire of Dam:

MD 1043/16 TW

Sire:

MV 101/19 TR

Dam:

MV 64/18 TW 0.22

Dam of Sire:

WD 87/17 TW 0.3

Dam of Dam:

MD 2479/12 TW ..2222

Purchaser: _____ Price: _____

Lot 199	MERRYVALE 199/21 TW			
----------------	---------------------	--	--	--

EBV	2985	3.96	6.23	0.18
	MW+M+W	WWTgBV	LW8gBV	NLBgBV
RANK	2/109	14/109	31/109	63/109

NZWTA Wool Testing Results	Wool Actual	MFD	CofV	Curv
	2.4	31.7	17.5	44.8

Sire of Sire:

WIM 1166/15

Sire of Dam:

MA 3/15 TW

Sire:

MD 1529/19 TW

Dam:

WD 251/17 TR 0.212

Dam of Sire:

MD 1351/17 TW 0.22

Dam of Dam:

WD 444/12 TW 0.2233

Purchaser: _____ Price: _____

Lot 200	MERRYVALE 109/21 TR			
----------------	---------------------	--	--	--

EBV	2298	3.39	5.69	0.23
	MW+M+W	WWTgBV	LW8gBV	NLBgBV
RANK	18/109	28/109	45/109	28/109

NZWTA Wool Testing Results	Wool Actual	MFD	CofV	Curv
	2.3	33.4	17.6	56.2

Sire of Sire:
MD 2273/15

Sire of Dam:
MA 3/15 TW

Sire:
MD 1897/19 TW

Dam:
WD 215/17 TW 0.233

Dam of Sire:
MD 1053/17 TW 0.223

Dam of Dam:
WD 295/14 0.122

Purchaser: _____ Price: _____

Lot 201	MERRYDOWNS 1735/21 TW			
----------------	-----------------------	--	--	--

EBV	1424	0.57	2.39	0.24
	MW+M+W	WWTgBV	LW8gBV	NLBgBV
RANK	428/643	603/643	560/643	138/643

NZWTA Wool Testing Results	Wool Actual	MFD	CofV	Curv
	2.3	38.7	19.4	42

Sire of Sire:
MD 802/14 TW

Sire of Dam:
FAR 40/16 TW

Sire:
EB 60/19 TW

Dam:
MD 1814/19 TW 0.2

Dam of Sire:
EB 110/15 TW 0.22232

Dam of Dam:
MD 1207/13 TW 0.22212

Purchaser: _____ Price: _____

Lot 202	MERRYVALE 140/21 TR			
----------------	---------------------	--	--	--

EBV	2255	2.94	4.28	0.21
	MW+M+W	WWTgBV	LW8gBV	NLBgBV
RANK	20/109	44/109	64/109	49/109

NZWTA Wool Testing Results	Wool Actual	MFD	CofV	Curv
	2.5	38.8	19.5	58.4

Sire of Sire:
RK 338/17 TW

Sire of Dam:
MD 1465/16

Sire:
RK 07/19

Dam:
MV 87/18 0.23

Dam of Sire:
RK 138/11 TW 0.122223122

Dam of Dam:
MD 2046/12 TW ..2211

Purchaser: _____ Price: _____

Lot 203	MERRYDOWNS 2605/21 TW			
----------------	-----------------------	--	--	--

EBV	1472	1.52	2.63	0.18
	MW+M+W	WWTgBV	LW8gBV	NLBgBV
RANK	409/643	510/643	537/643	355/643

NZWTA Wool Testing Results	Wool Actual	MFD	CofV	Curv
	2.2	35.7	21.3	61.4

Sire of Sire:
MD 2273/15

Sire of Dam:
FAR 40/16 TW

Sire:
MD 1897/19 TW

Dam:
MD 2213/18 TW 0.22

Dam of Sire:
MD 1053/17 TW 0.223

Dam of Dam:
MD 1393/14 TW 0.2322

Purchaser: _____ Price: _____

Lot 204	MERRYDOWNS 2035/21 TW			
----------------	------------------------------	--	--	--

EBV	1955	2.82	3.96	0.08
	MW+M+W	WWTgBV	LW8gBV	NLBgBV
RANK	202/643	230/643	421/643	607/643

NZWTA Wool Testing Results	Wool Actual	MFD	CofV	Curv
	2.5	34.4	20.3	66.1

Sire of Sire:

WIM 1166/15

Sire of Dam:

MD 960/13 TW

Sire:

MD 1529/19 TW

Dam:

MD 1920/16 0.2122

Dam of Sire:

MD 1351/17 TW 0.22

Dam of Dam:

MD 2420/12 0.22121

Purchaser: _____ Price: _____

Lot 205	MERRYDOWNS 1788/21 TW			
----------------	------------------------------	--	--	--

EBV	1615	1.46	3.88	0.28
	MW+M+W	WWTgBV	LW8gBV	NLBgBV
RANK	345/643	523/643	429/643	54/643

NZWTA Wool Testing Results	Wool Actual	MFD	CofV	Curv
	2.5	39.5	16.4	52.7

Sire of Sire:

MD 802/14 TW

Sire of Dam:

MD 1624/17 TW

Sire:

EB 60/19 TW

Dam:

MD 1564/19 TW 0.2

Dam of Sire:

EB 110/15 TW 0.22232

Dam of Dam:

MD 1299/15 0.2222

Purchaser: _____ Price: _____

Lot 206	MERRYDOWNS 1752/21 TW
----------------	-----------------------

EBV	1870	3.65	8.33	0.13
	MW+M+W	WWTgBV	LW8gBV	NLBgBV
RANK	243/643	67/643	30/643	528/643

NZWTA Wool Testing Results	Wool Actual	MFD	CofV	Curv
	2.4	37.5	19.9	61.1

Sire of Sire:
RK 284/17 TW

Sire of Dam:
WIM 1166/15

Sire:
RK 393/19 TW

Dam:
MD 1522/19 TW 0.2

Dam of Sire:
RK 302/17 TW 0.223

Dam of Dam:
MD 928/17 TR 0.222

Purchaser: _____ Price: _____

Lot 207	MERRYDOWNS 1741/21 TW
----------------	-----------------------

EBV	1661	2.37	3.23	0.32
	MW+M+W	WWTgBV	LW8gBV	NLBgBV
RANK	326/643	338/643	502/643	11/643

NZWTA Wool Testing Results	Wool Actual	MFD	CofV	Curv
	2	37.6	20.5	65.7

Sire of Sire:
MA 94/16 TW

Sire of Dam:
MD 1465/16

Sire:
MA 110/19 TW

Dam:
MD 1698/19 TW 0.2

Dam of Sire:
MA 479/14 TW 0.12122

Dam of Dam:
MD 1162/16 TW 0.2223

Purchaser: _____ Price: _____

Lot 208	MERRYDOWNS 1454/21 TW			
----------------	-----------------------	--	--	--

EBV	1611	2.44	3.73	0.24
	MW+M+W	WWTgBV	LW8gBV	NLBgBV
RANK	346/643	325/643	445/643	139/643

NZWTA Wool Testing Results	Wool Actual	MFD	CofV	Curv
	2.9	38.9	19.9	55.3

Sire of Sire:

MA 94/16 TW

Sire of Dam:

MD 902/16 TW

Sire:

MA 110/19 TW

Dam:

MD 2200/19 0.2

Dam of Sire:

MA 479/14 TW 0.12122

Dam of Dam:

MD 1886/17 TW 0.13

Purchaser: _____ Price: _____

Lot 209	MERRYDOWNS 1461/21 TW			
----------------	-----------------------	--	--	--

EBV	1863	3.3	5.76	0.28
	MW+M+W	WWTgBV	LW8gBV	NLBgBV
RANK	248/643	130/643	218/643	59/643

NZWTA Wool Testing Results	Wool Actual	MFD	CofV	Curv
	2.6	36.1	20.1	54.9

Sire of Sire:

MA 94/16 TW

Sire of Dam:

MD 1465/16

Sire:

MA 110/19 TW

Dam:

MD 1122/19 TW 0.2

Dam of Sire:

MA 479/14 TW 0.12122

Dam of Dam:

MD 1504/17 TW 0.222

Purchaser: _____ Price: _____

Lot 210	MERRYDOWNS 1969/21 TW			
----------------	-----------------------	--	--	--

EBV	2107	2.64	4.7	0.11
	MW+M+W	WWTgBV	LW8gBV	NLBgBV
RANK	138/643	272/643	344/643	563/643

NZWTA Wool Testing Results	Wool Actual	MFD	CofV	Curv
	2.5	34.5	22.6	42.5

Sire of Sire:
MD 1624/17 TR

Sire of Dam:
ORR 71/14 TR

Sire:
MD 1888/19 TW

Dam:
MD 2137/17 0.122

Dam of Sire:
MD 951/16 TW 0.222

Dam of Dam:
MD 2051/15 TW 0.1223

Purchaser: _____ Price: _____

Lot 211	MERRYVALE 134/21 TW			
----------------	---------------------	--	--	--

EBV	1531	3.17	4.64	0.23
	MW+M+W	WWTgBV	LW8gBV	NLBgBV
RANK	65/109	38/109	61/109	34/109

NZWTA Wool Testing Results	Wool Actual	MFD	CofV	Curv
	2.1	32.8	26.7	66.4

Sire of Sire:
MA 94/16 TW

Sire of Dam:
MD 2273/15

Sire:
MA 110/19 TW

Dam:
MV 134/19 0.2

Dam of Sire:
MA 479/14 TW 0.12122

Dam of Dam:
WD 10/17 TW 0.12

Purchaser: _____ Price: _____

Lot 212				
----------------	--	--	--	--

EBV				
	MW+M+W	WWTgBV	LW8gBV	NLBgBV
RANK				

NZWTA Wool Testing Results	Wool Actual	MFD	CofV	Curv

Sire of Sire:

Sire of Dam:

Sire:

Dam:

Dam of Sire:

Dam of Dam:

Purchaser: _____

Price: _____

Lot 213	MERRYDOWNS 2077/21 TW			
----------------	-----------------------	--	--	--

EBV	1045	2.34	4.7	0.19
	MW+M+W	WWTgBV	LW8gBV	NLBgBV
RANK	553/643	346/643	345/643	303/643

NZWTA Wool Testing Results	Wool Actual	MFD	CofV	Curv
	2.5	39.1	19.8	48.9

Sire of Sire:

MA 406/17 TW

Sire:

MA 815/19 TW

Dam of Sire:

MA 83/13 TW 0.12222

Purchaser: _____

Sire of Dam:

MD 1043/16 TW

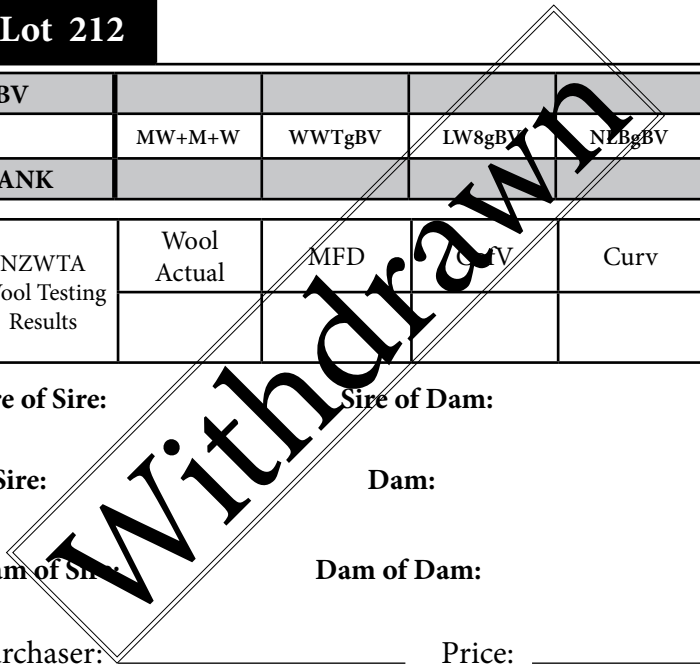
Dam:

MD 2093/19 TW 0.2

Dam of Dam:

MD 1142/14 TW 0.222212

Price: _____



Notes

A series of horizontal dotted lines for writing notes.

Notes

A series of horizontal dotted lines for writing notes.

Notes

A series of horizontal dotted lines for writing notes.

Buyers Instruction Slip (No verbal instructions will be accepted)

Name:

Phone/Fax: Cellphone:

Address:

Lots Purchased: Total No:

Account to:

Transfers:

Insure for: Months:

Signature of buyer:

In the event of the above mentioned being unwilling to make settlement on my behalf, I agree to do so personally in full within fourteen (14) days from the date of sale.

Signature:



*Thank you for your attendance.
We wish the purchasers every success. We know the
ram/s you have purchased will shift and perform well.
All are invited for refreshments after the sale.*

Blair and Sally Robertson



Merrydowns
Romney and Southdown Stud

PGG Wrightson Genetics

PGG Wrightson Genetics, making ram sales 'too easy!'

WE'RE STRAIGHT UP, SAVING YOU TIME.



scan me for
ram sales

Contact your local livestock representative.

Callum McDonald
Livestock Genetics
Representative
027 433 6443

Paul Pearce
Sheep & Beef Representative
027 478 5761

Andrew Martin
Regional Livestock Manager
027 441 6431

John McKone
Livestock Genetics Auctioneer
027 229 9375

Ben McKerchar
Sheep & Beef Representative
027 366 7766

pggwrightson.co.nz/ram-sales



fb.com/pgwgenetics
instagram.com/pgwgenetics

bidr
NZ's Virtual Saleyard

Rural insurance - your way.
call 0800 10 22 76

PGG Wrightson

BrokerWeb
RISK SERVICES
Your Insurance Partner