



**ON FARM
OPEN DAY
28 November
1-4pm**

**205 Rams Offered:
90 Southdowns/115 Romneys**

**Vendors: Blair & Sally Robertson,
348 Koi Rd
RD1 Gore
Ph 03 207 6851 or 027 4444085**



Merrydowns

**15th Annual
ON FARM RAM SALE**

**Tuesday 5 December 2023
Inspection from 10am
Sale starts 1pm**

Welcome

Welcome to “Merrydowns” 15th annual on farm ram sale. With the ever-increasing number of sheep breeds available in the current market we think it is important that the commercial farmer has the option to be able to purchase pure bred Romney and Southdown rams – an option which “Merrydowns” provides. We continue to focus on all of the commercial traits, carcass confirmation, quality, fertility, lambing ease and quality wool. This year we again side sampled the Romney Sale Rams to test their wool for micron, they have done particularly well in an extremely difficult season, this has pushed the average micron up to 40.6, curvature average is 56.6 which has significantly improved from last year and comfort factor average is 19.0. The explanations for each can be found in the catalogue after the introduction. Our Romney and Southdown Studs continue to be SIL recorded; these are used as a culling tool only, our linkages with other breeders are minimal. We are solely focussed on producing sheep with the commercial traits of; lambing percent to the

ram, ensuring that the ewes have the capacity to hold and rear their lambs, top quality wool and weights, longevity, structural soundness, constitution, growth rate, early maturity, actual fertility and quality first. We eye muscle scanned 212 Southdown ram hoggets on the 20 March 2023 (the average birth date was 15 September 2022); the average live weight was 56.1 kg's, they averaged 19.3 EMA with a top EMA scan of 25.8, the average EMA/LW was 0.345. The Romney ram lambs were shorn on the 25 January 2023 and then again on the 18 August 2023.

Please note the conditions of sale under ram transfers – it now reads as follows; Romney and Southdown rams purchased for breeding operations – registered or unregistered - will be a minimum of \$3,000.

We look forward to seeing you on the 5 December 2023.

Kind Regards

Blair, Sally, Jess, Jack and Stella Robertson



Where to find us

Definition of Wool Fibre Characteristics

Mean Fibre Diameter (MFD)

The Wool Industry has chosen to define Fibre Diameter in terms of the average thickness or width of all the fibres that are measured.

This is measured in Microns (μ). One micron is 1/1000th of a metre.

Comfort Factor (CF)

The ability to wear wool fibres next to skin has been associated with fibre diameter. It is the ends of the fibres which protrude from the yarn which irritate the nerve endings in the skin. Researchers have established that once the % of fibres coarser than 30μ exceeds 5% the fabric will become prickly to wear. The comfort factor is the % fibres $<30\mu$. So, in order to wear next to skin we need to have 95% of fibres $\leq 30\mu$. A comfort factor of 95%+ can be achieved by either having a finer micron or a lower CVD.

Fibre Curvature

The crimp of wool fibres has an impact on efficiency in top making and spinning, yarn properties and the structural and tactile properties of fabrics. This characteristic is of considerably less

direct importance in processing and product performance than fibre fineness or fibre length. However, if its impact can be reliably predicted, this may well provide opportunities for improving the quality of yarns and fabrics and for reducing production costs. High curvature fibres generally have a better ability to fill space and therefore are described as bulky and can provide more warmth with less weight. Fibre curvature is related to crimp and therefore the measurement of fibre curvature of raw wool provides an alternative to measuring fibre crimp. Defining fibre curvature is even more complex than defining fibre fineness. This is because curvature exists in 3 dimensions (see Figure 5). Even though fibres curve in 3 dimensions the measurement of Fibre curvature is in made in two dimensions. In practice we measure the angle of intersection of two lines at right angle to the fibre and 1 mm apart. The unit of this measure is degrees/mm. Curvature decreases as the arc approaches a straight line. So a highly crimped (curved) fibre will have a high degree of curvature, and a straight fibre will have a low degree of curvature.



NZWTA

Conditions of Sale

- Stud Ram Transfers:** Romney and Southdown purchased for breeding operations, registered or unregistered will be a minimum of \$3000.
- Buyers Registration:** A buyers number system will operate at the sale. Therefore it will be necessary for all prospective purchasers to register prior to the commencement of sale.
- Conditions:** This sale will be conducted under the usual conditions as set down by the New Zealand Stock and Station agents. A copy of which will be posted in the office.
- GST:** All lots are sold exclusive of GST.
- Disclaimer:** While all care and responsibility has been taken by the vendors and PGG Wrightson's no responsibility can be taken for any errors or omissions.
- Insurance:** All care will be taken with the sheep awaiting delivery but they become the responsibility of the purchaser at the fall of the hammer. Therefore insurance is strongly advised and representatives will be in attendance.
- Health and Safety Regulations:** Visitors are reminded of health and safety regulations. They are requested to take all care and responsibility for all actions whilst on the property.
- Rebate:** A 6% rebate is offered by PGG Wrightson's to all approved non participating companies who must register intending buyers at least 24 hours prior to sale.
- Selling order:** The vendor reserves the right to; alter the order, replace or withdraw lots.

Lots Index

Romney Rams

Lots 1- 33

Lots 64 - 93

Lots 124 - 153

Lots 184 - 205

The Land Southdowns

Lots A,B,C (offered at the end of the first run of the Southdowns)

Southdown Rams

Lots 34 - 63

Lots 94 - 123

Lots 154 - 183

Prefix Abbreviations

AU	Aurora	MD	Merrydowns
BL	Banklea	MV	Merryvale
BRF	Brookfield	MTA	Mt Annan
CD	Clifton Downs	ND	Nedelle Downs
CHA	Chandpara	OF	Offord
GP	Gatton Park	ORR	Okaruru
EB	Edenbank	OMI	Omihi
FAR	Farview	PH	Pahiwi
GP	Gatton Park	RW	Rawahi
GH	Glenhope	RK	Ruakiwi
HE	Hermiston	SP	Southern Pastures
HCT	Hillcroft	STP	Stormy Point
HF	Holly Farm	TEU	Te Ohu
HUN	Huruniu	TOT	Totaranui
KT	Kiwitahi	TRA	Tahrúa
KD	Kirkdale	TRD	Tralee
KTI	Kikitangeo	TU	Turanganui
MA	Mana	W	Waio
MAC	Maclaka	WD	Waidale
MAK	Mangakura	WIM	Waimai
MAP	Mapua	WLH	Willowhaugh



AonAgri brokers have worked with farmers, buyers and industry members across New Zealand, for a number of years. Our dedicated local teams understand the value and importance of making sure your Ram is properly covered.

Plus, talk to us about insuring your farm. If you move your farm insurance to AonAgri, we will cover your next Ram for free - up to the value of \$10,000*

Talk to your local Aon Gore broker today.

Contact 03 208 8800

Visit aon.co.nz

*Terms & Conditions apply. For more information talk to your AonAgri broker.

The background of the advertisement is a black and white photograph of a rural landscape. It shows rolling hills with distinct, curved tracks from a tractor or similar vehicle. In the foreground, there are some trees and a field. The overall mood is serene and agricultural.

**See you at the
2023 Sales!**

SIRE	MERRYDOWNS 1065/18 Tw
-------------	-----------------------

NZM- W+M+W	RANK	Number of Progeny
1360	9	285

Sire of Sire:
FAR 98/14 Tw

Sire of Dam:
W 442/13 Tw

Sire:
FAR 40/16 Tw

Dam:
MD 1080/15 22222

Dam of Sire:
FAR 128/14 Tw 22

Dam of Dam:
MD 2055/13 Tw 1

Comment: Thick, grunty and sound.

SIRE	MERRYDOWNS 1149/18 Tw
-------------	-----------------------

NZM- W+M+W	RANK	Number of Progeny
1278	10	137

Sire of Sire:
W 834/06 Tw

Sire of Dam:
MD 960/13 Tw

Sire:
W 442/13 Tw

Dam:
MD 1416/16 22222

Dam of Sire:
W 26/8 22222

Dam of Dam:
MD 2263/13 112

Comment: Extremely good carcass sheep.

SIRE	MERRYDOWNS 1585/18 Tw
-------------	-----------------------

NZM- W+M+W	RANK	Number of Progeny
1928	8	274

Sire of Sire:
W 109/13 Tw

Sire of Dam:
W 442/13 Tw

Sire:
MD902/16 Tw

Dam:
MD 1147/16 Tw 2

Dam of Sire:
MD 1947/14 Tw 22

Dam of Dam:
MD 1418/14 Tw 22

Comment: Moderate framed, quality, sound, top breeding ram. 3 sons retained.

SIRE	MERRYDOWNS 2036/18 Tw
-------------	-----------------------

NZM- W+M+W	RANK	Number of Progeny
1265	11	116

Sire of Sire:
W 442/13 Tw

Sire of Dam:
MD 1431/11 Tr

Sire:
MD1043/16 Tw

Dam:
MD 1198/13 Tw 2222

Dam of Sire:
MD 1935/14 Tw 21211

Dam of Dam:
BL 2526/09 22222222

Comment: Extremely high quality, long second shear medium strong wool.

SIRE	RUAKIWI R7/19	
-------------	---------------	--

NZM- W+M+W	RANK	Number of Progeny
2679	2	300

Sire of Sire:
RK 93/15 Tr

Sire of Dam:
RK 590/09 Tw

Sire:
RK338/17 Tw

Dam:
RK 138/11 Tw 2212212

Dam of Sire:
RK 277/14 Tw 12

Dam of Dam:
RK 90/07 Tw 2222

Comment: Top breeding ram. Purchased with an index of 2406. 3 sons retained.

SIRE	RUAKIWI 393/19 Tw	
-------------	-------------------	--

NZM- W+M+W	RANK	Number of Progeny
1044	16	355

Sire of Sire:
RK 81/13 Tr

Sire of Dam:
RK 93/15 Tr

Sire:
RK 284/17 Tw

Dam:
RK 302/17 Tw 2

Dam of Sire:
RK 910/10 TW 12222222

Dam of Dam:
RK 89/13 Tw 2222

Comment: Purchased with an index of 2047. Medium framed, good carcass and strong wool.

SIRE	EDEN BANK 60/19 Tw	
-------------	--------------------	--

NZM- W+M+W	RANK	Number of Progeny
454	16	359

Sire of Sire:
AU 233/12 Tw

Sire of Dam:
EB 37/14

Sire:
MD802/14 Tw

Dam:
EB 110/15 Tw 2223

Dam of Sire:
MD 1112/12 Tw 2221

Dam of Dam:
EB 275/08 2222

Comment: Purchased with an index of 1362. High quality and sound.

SIRE	MANA M110/19 Tw	
-------------	-----------------	--

NZM- W+M+W	RANK	Number of Progeny
1195	12	365

Sire of Sire:
BL 2044/14 Tw

Sire of Dam:
TEU 6019/11 Tw

Sire:
MA94/16 Tw

Dam:
MA 479/14 Tw 12122

Dam of Sire:
STP 4551/14 Tw 1222

Dam of Dam:
MA 405/12 Tr 22322

Comment: Purchased with an index of 2761. Medium framed high quality. 1 son retained.

SIRE	MANA M815/19 Tw
-------------	-----------------

NZM- W+M+W	RANK	Number of Progeny
181	18	371

Sire of Sire:
PH 675/15 Tw

Sire of Dam:
TU 5681/10 Tw

Sire:
MA406/17 Tw

Dam:
MA 83/13 Tw 12222

Dam of Sire:
MA 567/15 2222

Dam of Dam:
MA 182/08 22222

Comment: Purchased with an index of 2431. Good carcass and sound.

SIRE	MERRYDOWNS 1529/19Tw
-------------	----------------------

NZM- W+M+W	RANK	Number of Progeny
2745	1	188

Sire of Sire:
WIM 289/13 Tw

Sire of Dam:
MD 2204/12 Tw

Sire:
WIM1166/15

Dam:
MD 1351/17 Tw 22

Dam of Sire:
WIM 850/13 Tw 111

Dam of Dam:
MD 900/15 Tw 2121

Comment: Extremely good carcass sheep, Thick and grunty.

SIRE	MERRYDOWNS 1888/19 Tw
-------------	-----------------------

NZM- W+M+W	RANK	Number of Progeny
2355	3	159

Sire of Sire:
MD 1439/15 Tw

Sire of Dam:
W 442/13 Tw

Sire:
MD1624/17 Tw

Dam:
MD 951/16 Tw 222

Dam of Sire:
MD 2643/13 Tw 223

Dam of Dam:
MD 1219/14 Tw 222

Comment: Real grunter sound as a bell, quality plus. 1 son retained.

SIRE	MERRYDOWNS 1897/19 Tw
-------------	-----------------------

NZM- W+M+W	RANK	Number of Progeny
1005	13	212

Sire of Sire:
MD 1986/11 Tw

Sire of Dam:
MD 1292/14 Tw

Sire:
MD 2273/15

Dam:
MD 1053/17 Tw 2232

Dam of Sire:
MD 2134/12 1221223

Dam of Dam:
MD 919/14 Tw 12

Comment: Extremely high quality, guts and bone.

SIRE	MERRYVALE 75/20 Tr
-------------	--------------------

NZM- W+M+W	RANK	Number of Progeny
2282	6	115

Sire of Sire:
W 442/13 Tw

Sire of Dam:
RW 984/12 Tw

Sire:
MD1043/16 Tw

Dam:
WD 62/17 Tw 231

Dam of Sire:
MD 1935/14 Tw 21211

Dam of Dam:
WD 483/11 Tw

Comment: Top breeding ram. Exceptional carcass and wool. 1 son retained.

SIRE	MERRYVALE 103/20 Tw
-------------	---------------------

NZM- W+M+W	RANK	Number of Progeny
2253	7	89

Sire of Sire:
MD 902/16 Tw

Sire of Dam:
MA 03/15 Tw

Sire:
MD1585/18 Tw

Dam:
WD 178/17 Tw 2232

Dam of Sire:
MD 1147/16 Tw 2

Dam of Dam:
WD 249/15 Tw

Comment: Medium framed, thick, grunty and sound. 1 son retained.

SIRE

MERRYDOWNS 2434/20 Tr

NZM- W+M+W	RANK	Number of Progeny
2333	4	161

Sire of Sire:

MD 902/16 Tw

Sire of Dam:

WIM 1166/15

Sire:

MD1585/18 Tw

Dam:

MD 1871/17 1333

Dam of Sire:

MD 1147/16 Tw 2

Dam of Dam:

MD 1089/14 11

Comment: Top breeding ram. Extremely high quality, carcass and sound. 1 son retained.

SIRE	KIRKDALE SD K36/18 TW
-------------	-----------------------

NZM- W+M+W	RANK	Number of Progeny
539	12	584

Sire of Sire:
ND 2/11

Sire of Dam:
KD 300/08

Sire:
ND216/14

Dam:
KD 226/11

Dam of Sire:
ND 141/09

Dam of Dam:
KD 3/05

Comment: Imported from Tasmania. Extremely sound with longevity. 4 sons retained.

SIRE	TRALEE SD T9/19 TR
-------------	--------------------

NZM- W+M+W	RANK	Number of Progeny
909	5	337

Sire of Sire:
WLH 127/14 TW

Sire of Dam:
CD 250/11

Sire:
CD 462/16 TW

Dam:
TRD 125/15

Dam of Sire:
CD 346/14

Dam of Dam:
TRD 202/11

Comment: Purchased for \$6000, 1 son retained, breeding well.

SIRE	MERRYDOWNS SD 67/19 TW
-------------	------------------------

NZM- W+M+W	RANK	Number of Progeny
761	8	324

Sire of Sire:
TRD 74/14 TW

Sire of Dam:
MD 338/15 TW

Sire:
WD 760/17 TW

Dam:
MD 830/17 TW

Dam of Sire:
WD 752/13

Dam of Dam:
MD 238/13 TR

Comment: Thick grunty, very high quality. 2 sons retained.

SIRE	MERRYDOWNS SD 643/19 TW
-------------	-------------------------

NZM- W+M+W	RANK	Number of Progeny
983	3	134

Sire of Sire:
MD 04/15 TW

Sire of Dam:
MD 435/10 TR

Sire:
MD 176/16 TW

Dam:
MD 778/16

Dam of Sire:
MD 451/10 TW

Dam of Dam:
MD 94/14 TW

Comment: Thick grunty and sound, high quality.

SIRE	MERRYDOWNS SD 1100/19 TW
-------------	--------------------------

NZM- W+M+W	RANK	Number of Progeny
1294	1	374

Sire of Sire:
MD 435/10 TR

Sire of Dam:
MAC 14/13 TW

Sire:
HF K7/16

Dam:
MD 80/16 TW

Dam of Sire:
HF 115/12

Dam of Dam:
MD 190/14 TR

Comment: All Breeds champion Wanaka Show, 1 son retained.

SIRE	MERRYDOWNS SD 385/20 TR
-------------	-------------------------

NZM- W+M+W	RANK	Number of Progeny
627	11	89

Sire of Sire:
ND216/14

Sire of Dam:
MD 187/15

Sire:
KD 36/18 TW

Dam:
MD 659/16 TW

Dam of Sire:
KD 226/11

Dam of Dam:
MD 638/13 TW

Comment: High quality, extremely sound.

SIRE	MERRYDOWNS SD 457/20 TR
-------------	-------------------------

NZM- W+M+W	RANK	Number of Progeny
517	13	201

Sire of Sire:
WLH 231/16 TW

Sire of Dam:
MD 276/15 TW

Sire:
MD 450/18 TW

Dam:
MD 752/16 TR

Dam of Sire:
MD 524/16

Dam of Dam:
MD 011/09 TW

Comment: Top ram unfortunately lost.

SIRE	MERRYDOWNS SD 597/20 TR
-------------	-------------------------

NZM- W+M+W	RANK	Number of Progeny
958	4	51

Sire of Sire:
MD 176/16 TW

Sire of Dam:
MD 334/10 TW

Sire:
MD 676/18 TR

Dam:
MD 209/15 TW

Dam of Sire:
MD 404/12 TR

Dam of Dam:
MD 104/12 TW

Comment: Extremely well bred, high quality, sold to breed South Dorsets.

SIRE	MERRYDOWNS SD 702/20 TW
-------------	-------------------------

NZM- W+M+W	RANK	Number of Progeny
850	7	176

Sire of Sire:
ND 216/14

Sire of Dam:
MD 435/10 TR

Sire:
KD 36/18 TW

Dam:
MD 357/17 TW

Dam of Sire:
KD 226/11

Dam of Dam:
MD 553/13 TW

Comment: Extremely sound, meaty and thick, breeding well.

SIRE	MERRYDOWNS SD 1095/20 TW
-------------	--------------------------

NZM- W+M+W	RANK	Number of Progeny
691	9	124

Sire of Sire:
ND 216/14

Sire of Dam:
MD 618/16 TW

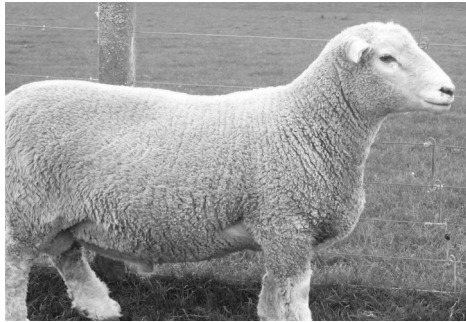
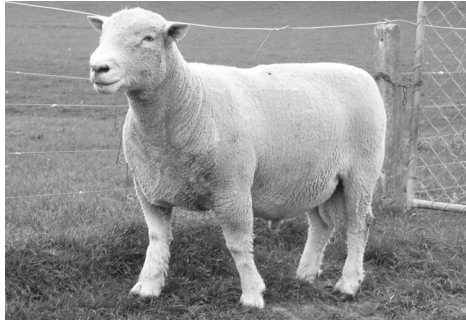
Sire:
KD 36/18 TW

Dam:
MD 438/18 TW

Dam of Sire:
KD 226/11

Dam of Dam:
MD 705/12 TW

Comment: Extremely high quality, super sound, thick and meaty. 2 sons retained.





Lot 1	MERRYDOWNS 2354/22 TW			
--------------	-----------------------	--	--	--

EBV	1964	2.16	5.31	0.21
	MW+M+W	WWTgBV	LW8gBV	NLBgBV
RANK	131/643	249/643	154/643	207/643

NZWTA Wool Testing Results	Wool Actual (Kgs)	MFD	CofV	Curv
	4	38.5	61.8	16.7

Sire of Sire:
MD 1585/18 Tw

Sire:
MD 2434/20 Tr

Dam of Sire:
MD 1871/17 0.1333

Purchaser: _____ Price: _____

Sire of Dam:
FAR 40/16 Tw

Dam:
MD 1301/19 Tw 0.22

Dam of Dam:
MD 1491/16 Tw 0.22

Lot 2	MERRYDOWNS 1586/22 TW			
--------------	-----------------------	--	--	--

EBV	1593	2.57	6.48	0.27
	MW+M+W	WWTgBV	LW8gBV	NLBgBV
RANK	271/643	143/643	69/643	69/643

NZWTA Wool Testing Results	Wool Actual (Kgs)	MFD	CofV	Curv
	4.6	45.1	75.7	19

Sire of Sire:
MA 94/16 Tw

Sire:
MA 110/19 Tw

Dam of Sire:
MA 479/14 Tw 0.12122

Purchaser: _____ Price: _____

Sire of Dam:
MD 1014/18 Tw

Dam:
MD 1988/20 Tw 0.2

Dam of Dam:
MD 1652/15 Tw 0.122212

Lot 3		MERRYDOWNS 2214/22 TW		
EBV	2381	2.96	6.47	0.24
	MW+M+W	WWTgBV	LW8gBV	NLBgBV
RANK	40/643	89/643	71/643	118/643
NZWTA Wool Testing Results	Wool Actual (Kgs)	MFD	CofV	Curv
	3.7	41.9	58.7	18.1

Sire of Sire:
RK 338/17 Tw

Sire:
RK 7/19

Dam of Sire:
RK 138/11 Tw 0.122223122

Purchaser: _____ Price: _____

Sire of Dam:
MD 1624/17 Tr

Dam:
MD 1409/19 Tw 0.22

Dam of Dam:
MD 1057/16 Tw 0.22212

Lot 4		MERRYDOWNS 1718/22 TW		
EBV	2174	3.72	7.27	0.18
	MW+M+W	WWTgBV	LW8gBV	NLBgBV
RANK	82/643	27/643	33/643	319/643
NZWTA Wool Testing Results	Wool Actual (Kgs)	MFD	CofV	Curv
	3.9	39.1	72.4	17.6

Sire of Sire:
MD 1043/16 Tw

Sire:
MV 75/20 Tr

Dam of Sire:
WD 62/17 Tw 0.231

Purchaser: _____ Price: _____

Sire of Dam:
FAR 40/16 Tw

Dam:
MD 2429/18 Tw 0.122

Dam of Dam:
MD 1928/13 Tw 0.222222

Lot 5

MERRYDOWNS 2338/22 TW

EBV	2600	4.15	9.06	0.23
	MW+M+W	WWTgBV	LW8gBV	NLBgBV
RANK	10/643	17/643	5/643	141/643

NZWTA Wool Testing Results	Wool Actual (Kgs)	MFD	CofV	Curv
	4.2	37.9	57.6	17.1

Sire of Sire:

RK 338/17 Tw

Sire of Dam:

WIM 1166/15

Sire:

RK 7/19

Dam:

MD 2212/19 Tw 0.32

Dam of Sire:

RK 138/11 Tw 0.122223122

Dam of Dam:

MD 1356/17 Tw 0.2

Purchaser: _____ Price: _____

Lot 6

MERRYDOWNS 2141/22

EBV	2048	3	6.66	0.2
	MW+M+W	WWTgBV	LW8gBV	NLBgBV
RANK	107/643	86/643	55/643	255/643

NZWTA Wool Testing Results	Wool Actual (Kgs)	MFD	CofV	Curv
	4.3	37.8	60.6	15.3

Sire of Sire:

MD 902/16 Tw

Sire of Dam:

WIM 1166/15

Sire:

MD 1585/18 Tw

Dam:

MD 1943/18 Tr 0.221

Dam of Sire:

MD 1147/16 Tw 0.2

Dam of Dam:

MD 1906/16 Tr 0.32222

Purchaser: _____ Price: _____

Lot 7	MERRYDOWNS 2296/22 TW			
--------------	-----------------------	--	--	--

EBV	2071	2.35	5.02	0.23
	MW+M+W	WWTgBV	LW8gBV	NLBgBV
RANK	103/643	195/643	194/643	152/643

NZWTA Wool Testing Results	Wool Actual (Kgs)	MFD	CofV	Curv
	3.9	40.2	59.7	20.7

Sire of Sire:
MD 1043/16 Tw

Sire:
MV 75/20 Tr

Dam of Sire:
WD 62/17 Tw 0.231

Purchaser: _____ Price: _____

Sire of Dam:
FAR 40/16 Tw

Dam:
MD 2440/18 Tw 0.222

Dam of Dam:
MD 2274/13 Tw 0.3322

Lot 8	MERRYDOWNS 1887/22			
--------------	--------------------	--	--	--

EBV	1639	3.09	5.12	0.15
	MW+M+W	WWTgBV	LW8gBV	NLBgBV
RANK	243/643	80/643	180/643	422/643

NZWTA Wool Testing Results	Wool Actual (Kgs)	MFD	CofV	Curv
	4.7	42.8	60.6	17.5

Sire of Sire:
MD 1043/16 Tw

Sire:
MV 75/20 Tr

Dam of Sire:
WD 62/17 Tw 0.231

Purchaser: _____ Price: _____

Sire of Dam:
MD 902/16 Tw

Dam:
MD 1578/19 Tw 0.21

Dam of Dam:
MD 1239/14 Tr 0.13221

Lot 9

MERRYDOWNS 1794/22

EBV	1613	3.38	6.13	0.17
	MW+M+W	WWTgBV	LW8gBV	NLBgBV
RANK	257/643	49/643	88/643	372/643

NZWTA Wool Testing Results	Wool Actual (Kgs)	MFD	CofV	Curv
	4	41.3	64.5	15.4

Sire of Sire:
MD 1043/16 Tw

Sire:
MV 75/20 Tr

Dam of Sire:
WD 62/17 Tw 0.231

Purchaser: _____ Price: _____

Sire of Dam:
HE 321/17 Tw

Dam:
MD 1514/19 Tw 0.21

Dam of Dam:
MD 1969/16 Tw ..2232

Lot 10

MERRYDOWNS 1816/22

EBV	1793	3.13	6.72	0.18
	MW+M+W	WWTgBV	LW8gBV	NLBgBV
RANK	187/643	75/643	54/643	321/643

NZWTA Wool Testing Results	Wool Actual (Kgs)	MFD	CofV	Curv
	3.9	37.6	58.7	18.9

Sire of Sire:
WIM 1166/15

Sire:
MD 1529/19 Tw

Dam of Sire:
MD 1351/17 Tw 0.22

Purchaser: _____ Price: _____

Sire of Dam:
MD 1465/16

Dam:
MD 1698/19 Tw 0.21

Dam of Dam:
MD 1162/16 Tw 0.2223

Lot 11		MERRYDOWNS 1913/22 TW		
EBV	2578	3.56	5.58	0.21
	MW+M+W	WWTgBV	LW8gBV	NLBgBV
RANK	12/643	35/643	126/643	222/643
NZWTA Wool Testing Results	Wool Actual (Kgs)	MFD	CofV	Curv
	4.4	38.7	52.1	22.9

Sire of Sire:

MD 1585/18 Tw

Sire:

MD 2434/20 Tr

Dam of Sire:

MD 1871/17 0.1333

Purchaser: _____ Price: _____

Sire of Dam:

MD 1465/16

Dam:

MD 1859/18 0.222

Dam of Dam:

MD 1848/16 Tw 0.12

Lot 12		MERRYDOWNS 1905/22 TW		
EBV	1908	3.23	5.47	0.16
	MW+M+W	WWTgBV	LW8gBV	NLBgBV
RANK	145/643	62/643	140/643	404/643
NZWTA Wool Testing Results	Wool Actual (Kgs)	MFD	CofV	Curv
	4.6	41.2	48.6	19.8

Sire of Sire:

MD 1585/18 Tw

Sire:

MD 2434/20 Tr

Dam of Sire:

MD 1871/17 0.1333

Purchaser: _____ Price: _____

Sire of Dam:

MD 1292/14 Tw

Dam:

MD 1021/18 0.212

Dam of Dam:

MD 1364/16 Tr 0.1

Lot 13

MERRYDOWNS 2790/22 TW

EBV	1215	2.54	5.59	0.18
	MW+M+W	WWTgBV	LW8gBV	NLBgBV
RANK	434/643	149/643	124/643	320/643

NZWTA Wool Testing Results	Wool Actual (Kgs)	MFD	CofV	Curv
	4.2	38.7	63	18.5

Sire of Sire:

MD 2273/15

Sire of Dam:

MD 1043/16 Tw

Sire:

MD 1897/19 Tw

Dam:

MD 2271/18 Tr 0.122

Dam of Sire:

MD 1053/17 Tw 0.2232

Dam of Dam:

MD 1202/15 Tw 0.23

Purchaser: _____ Price: _____

Lot 14

MERRYDOWNS 2770/22

EBV	2121	1.3	2.86	0.25
	MW+M+W	WWTgBV	LW8gBV	NLBgBV
RANK	91/643	499/643	505/643	101/643

NZWTA Wool Testing Results	Wool Actual (Kgs)	MFD	CofV	Curv
	4	40.5	77.3	15.7

Sire of Sire:

MD 1585/18 Tw

Sire of Dam:

W 442/13 Tw

Sire:

MV 103/20 Tw

Dam:

MD 1561/18 Tw 0.221

Dam of Sire:

WD 178/17 Tw 0.2232

Dam of Dam:

MD 2093/12 Tw 0.22222

Purchaser: _____ Price: _____

Lot 15		MERRYDOWNS 1727/22 TW		
EBV	1995	3.47	6.76	0.2
	MW+M+W	WWTgBV	LW8gBV	NLBgBV
RANK	121/643	43/643	49/643	271/643
NZWTA Wool Testing Results	Wool Actual (Kgs)	MFD	CofV	Curv
	3.7	42.7	60.2	18

Sire of Sire:

MD 1043/16 Tw

Sire:

MV 75/20 Tr

Dam of Sire:

WD 62/17 Tw 0.231

Purchaser: _____ Price: _____

Sire of Dam:

W 442/13 Tw

Dam:

MD 1781/18 0.212

Dam of Dam:

MD 1826/14 Tw 0.121

Lot 16		MERRYVALE 108/22 TW		
EBV	2254	3.26	5.43	0.21
	MW+M+W	WWTgBV	LW8gBV	NLBgBV
RANK	8/109	13/109	21/109	30/109
NZWTA Wool Testing Results	Wool Actual (Kgs)	MFD	CofV	Curv
	5.2	43.8	49.5	19.9

Sire of Sire:

MD 1585/18 Tw

Sire:

MD 2434/20 Tr

Dam of Sire:

MD 1871/17 0.1333

Purchaser: _____ Price: _____

Sire of Dam:

MD 1043/16 Tw

Dam:

MV 166/19 Tr 0.12

Dam of Dam:

MV 20/17 Tw 0.3

Lot 17

MERRYDOWNS 1526/22 TW

EBV	1355	1.23	3.69	0.29
	MW+M+W	WWTgBV	LW8gBV	NLBgBV
RANK	365/643	518/643	403/643	20/643

NZWTA Wool Testing Results	Wool Actual (Kgs)	MFD	CofV	Curv
	3.6	38.5	51.4	19.1

Sire of Sire:

MD 802/14 Tw

Sire of Dam:

MD 1624/17 Tr

Sire:

EB 60/19 Tw

Dam:

MD 1942/20 0.2

Dam of Sire:

EB 110/15 Tw 0.222322

Dam of Dam:

MD 2515/18 0.1

Purchaser: _____ Price: _____

Lot 18

MERRYDOWNS 2784/22 TW

EBV	2319	3.22	6.4	0.19
	MW+M+W	WWTgBV	LW8gBV	NLBgBV
RANK	53/643	67/643	73/643	303/643

NZWTA Wool Testing Results	Wool Actual (Kgs)	MFD	CofV	Curv
	3.6	34.4	52.2	19.1

Sire of Sire:

MD 902/16 Tw

Sire of Dam:

MD 1537/15 Tw

Sire:

MD 1585/18 Tw

Dam:

MD 2026/19 Tw 0.22

Dam of Sire:

MD 1147/16 Tw 0.2

Dam of Dam:

MD 1148/17 Tw 0.223

Purchaser: _____ Price: _____

Lot 19		MERRYDOWNS 2112/22		
EBV	1758	4.8	9.5	0.17
	MW+M+W	WWTgBV	LW8gBV	NLBgBV
RANK	199/643	4/643	4/643	364/643
NZWTA Wool Testing Results	Wool Actual (Kgs)	MFD	CofV	Curv
	4.6	42	51.6	18.5

Sire of Sire:
MD 1043/16 Tw

Sire:
MV 75/20 Tr

Dam of Sire:
WD 62/17 Tw 0.231

Purchaser: _____ Price: _____

Sire of Dam:
HE 321/17 Tw

Dam:
MD 2015/19 0.21

Dam of Dam:
MD 1867/16 Tw 0.213

Lot 20		MERRYDOWNS 2061/22 TW		
EBV	2330	3.47	6.04	0.15
	MW+M+W	WWTgBV	LW8gBV	NLBgBV
RANK	50/643	41/643	96/643	423/643
NZWTA Wool Testing Results	Wool Actual (Kgs)	MFD	CofV	Curv
	4.1	41.1	69.2	18.1

Sire of Sire:
RK 338/17 Tw

Sire:
RK 7/19

Dam of Sire:
RK 138/11 Tw 0.122223122

Purchaser: _____ Price: _____

Sire of Dam:
MD 1043/16 Tw

Dam:
MD 1593/19 Tw 0.22

Dam of Dam:
MD 1796/17 Tw 0.222

Lot 21

MERRYDOWNS 1647/22 TW

EBV	1441	3.73	7.53	0.17
	MW+M+W	WWTgBV	LW8gBV	NLBgBV
RANK	331/643	25/643	27/643	366/643

NZWTA Wool Testing Results	Wool Actual (Kgs)	MFD	CofV	Curv
	4.7	41.5	63.1	18.9

Sire of Sire:

MA 406/17 Tw

Sire of Dam:

HE 321/17 Tw

Sire:

MA 815/19 Tw

Dam:

MD 1450/20 Tw 0.2

Dam of Sire:

MA 83/13 Tw 0.12222

Dam of Dam:

MD 1605/18 Tw 0.222

Purchaser: _____ Price: _____

Lot 22

MERRYDOWNS 2088/22

EBV	2240	2.16	4.08	0.26
	MW+M+W	WWTgBV	LW8gBV	NLBgBV
RANK	66/643	251/643	332/643	91/643

NZWTA Wool Testing Results	Wool Actual (Kgs)	MFD	CofV	Curv
	3.9	45	58.9	17.1

Sire of Sire:

MD 1585/18 Tw

Sire of Dam:

MD 954/16 Tw

Sire:

MV 103/20 Tw

Dam:

MD 1315/18 Tw 0.231

Dam of Sire:

WD 178/17 Tw 0.2232

Dam of Dam:

MD 879/15 Tw 0.122

Purchaser: _____ Price: _____

Lot 23		MERRYDOWNS 2044/22 TW		
EBV	2297	3.31	6.15	0.17
	MW+M+W	WWTgBV	LW8gBV	NLBgBV
RANK	57/643	57/643	84/643	359/643
NZWTA Wool Testing Results	Wool Actual (Kgs)	MFD	CofV	Curv
	3.6	39.3	46.1	18.6

Sire of Sire:
RK 338/17 Tw

Sire:
RK 7/19

Dam of Sire:
RK 138/11 Tw 0.122223122

Purchaser: _____ Price: _____

Sire of Dam:
HE 321/17 Tw

Dam:
MD 1260/19 0.22

Dam of Dam:
MD 893/15 0.221

Lot 24		MERRYDOWNS 1459/22 TW		
EBV	1264	2.52	5.49	0.2
	MW+M+W	WWTgBV	LW8gBV	NLBgBV
RANK	409/643	153/643	136/643	266/643
NZWTA Wool Testing Results	Wool Actual (Kgs)	MFD	CofV	Curv
	4.5	45.7	72.7	19.7

Sire of Sire:
MA 94/16 Tw

Sire:
MA 110/19 Tw

Dam of Sire:
MA 479/14 Tw 0.12122

Purchaser: _____ Price: _____

Sire of Dam:
MD 1043/16 Tw

Dam:
MD 1521/20 0.2

Dam of Dam:
MD 2050/15 Tw 0.1221

Lot 25	MERRYDOWNS 1914/22 TW			
---------------	-----------------------	--	--	--

EBV	2442	3.45	5.82	0.21
	MW+M+W	WWTgBV	LW8gBV	NLBgBV
RANK	26/643	45/643	105/643	222/643

NZWTA Wool Testing Results	Wool Actual (Kgs)	MFD	CofV	Curv
	4.4	41.9	40.8	22

Sire of Sire:
MD 1585/18 Tw

Sire:
MD 2434/20 Tr

Dam of Sire:
MD 1871/17 0.1333

Purchaser: _____ Price: _____

Sire of Dam:
MD 1465/16

Dam:
MD 1859/18 0.222

Dam of Dam:
MD 1848/16 Tw 0.12

Lot 26	MERRYDOWNS 1788/22 TW			
---------------	-----------------------	--	--	--

EBV	1751	4.05	7.32	0.23
	MW+M+W	WWTgBV	LW8gBV	NLBgBV
RANK	203/643	20/643	32/643	161/643

NZWTA Wool Testing Results	Wool Actual (Kgs)	MFD	CofV	Curv
	3.6	40.2	55.5	18.6

Sire of Sire:
MD 1043/16 Tw

Sire:
MV 75/20 Tr

Dam of Sire:
WD 62/17 Tw 0.231

Purchaser: _____ Price: _____

Sire of Dam:
MD 954/16 Tw

Dam:
MD 1265/19 Tw 0.22

Dam of Dam:
MD 1265/14 Tw 0.2222

Lot 27		MERRYDOWNS 1716/22 TW		
EBV	1613	2.13	5.51	0.21
	MW+M+W	WWTgBV	LW8gBV	NLBgBV
RANK	256/643	257/643	135/643	219/643
NZWTA Wool Testing Results	Wool Actual (Kgs)	MFD	CofV	Curv
	3.9	38.3	52.5	22.4

Sire of Sire:
W 442/13 Tw

Sire:
MD 1149/18 Tw

Dam of Sire:
MD 1416/16 0.22222

Purchaser: _____ Price: _____

Sire of Dam:
FAR 40/16 Tw

Dam:
MD 2189/19 0.22

Dam of Dam:
MD 1948/15 Tr 0.211

Lot 28		MERRYDOWNS 1745/22		
EBV	1652	1.8	4.09	0.15
	MW+M+W	WWTgBV	LW8gBV	NLBgBV
RANK	237/643	360/643	330/643	445/643
NZWTA Wool Testing Results	Wool Actual (Kgs)	MFD	CofV	Curv
	3.9	34.2	56.4	22.4

Sire of Sire:
MD 2273/15

Sire:
MD 1897/19 Tw

Dam of Sire:
MD 1053/17 Tw 0.2232

Purchaser: _____ Price: _____

Sire of Dam:
FAR 40/16 Tw

Dam:
MD 1638/18 Tw 0.221

Dam of Dam:
MD 1263/13 Tw 0.222213

Lot 29

MERRYDOWNS 2107/22 TR

EBV	2722	3.22	5.88	0.28
	MW+M+W	WWTgBV	LW8gBV	NLBgBV
RANK	3/643	65/643	101/643	39/643

NZWTA Wool Testing Results	Wool Actual (Kgs)	MFD	CofV	Curv
	3.9	39.2	71.2	19.9

Sire of Sire:

WIM 1166/15

Sire of Dam:

MD 1624/17 Tr

Sire:

MD 1529/19 Tw

Dam:

MD 1719/19 Tw 0.23

Dam of Sire:

MD 1351/17 Tw 0.22

Dam of Dam:

MD 1198/15 Tw 0.23221

Purchaser: _____ Price: _____

Lot 30

MERRYVALE 70/22 TW

EBV	1770	3.83	6.72	0.17
	MW+M+W	WWTgBV	LW8gBV	NLBgBV
RANK	22/109	5/109	8/109	45/109

NZWTA Wool Testing Results	Wool Actual (Kgs)	MFD	CofV	Curv
	4	39.9	72.9	17.5

Sire of Sire:

MD 1043/16 Tw

Sire of Dam:

MD 1465/16

Sire:

MV 75/20 Tr

Dam:

MV 204/19 0.12

Dam of Sire:

WD 62/17 Tw 0.231

Dam of Dam:

MV 79/17 Tr 0.11

Purchaser: _____ Price: _____

Lot 31		MERRYDOWNS 2291/22		
EBV	2148	2.65	4.81	0.2
	MW+M+W	WWTgBV	LW8gBV	NLBgBV
RANK	87/643	124/643	216/643	245/643
NZWTA Wool Testing Results	Wool Actual (Kgs)	MFD	CofV	Curv
	3.7	39.6	51.4	17

Sire of Sire:
RK 338/17 Tw

Sire:
RK 7/19

Dam of Sire:
RK 138/11 Tw 0.122223122

Purchaser: _____ Price: _____

Sire of Dam:
W 442/13 Tw

Dam:
MD 1282/19 Tw 0.21

Dam of Dam:
MD 1073/17 Tw 0.22

Lot 32		MERRYDOWNS 2743/22 TW		
EBV	1873	0.9	3.42	0.16
	MW+M+W	WWTgBV	LW8gBV	NLBgBV
RANK	159/643	587/643	428/643	399/643
NZWTA Wool Testing Results	Wool Actual (Kgs)	MFD	CofV	Curv
	4.1	41.8	49.8	19.1

Sire of Sire:
FAR 40/16 Tw

Sire:
MD 1065/18 Tw

Dam of Sire:
MD 1080/15 0.22222

Purchaser: _____ Price: _____

Sire of Dam:
MD 902/16 Tw

Dam:
MD 1626/19 Tw 0.22

Dam of Dam:
MD 1967/16 Tw 0.22

Lot 33

MERRYDOWNS 1805/22 TW

EBV	1659	2.87	5.7	0.17
	MW+M+W	WWTgBV	LW8gBV	NLBgBV
RANK	234/643	100/643	112/643	371/643
NZWTA Wool Testing Results	Wool Actual (Kgs)	MFD	CofV	Curv
	3.9	43.3	68	17.2

Sire of Sire:

RK 338/17 Tw

Sire:

RK 7/19

Dam of Sire:

RK 138/11 Tw 0.122223122

Purchaser: _____

Sire of Dam:

MD 954/16 Tw

Dam:

MD 1265/18 Tw 0.222

Dam of Dam:

MD 1498/16 Tw 0.22222

Price: _____

Off the
IT
Grid
Services

*Please feel free to contact Matt on
022 500 8623 or look us up on facebook
search for
'Off the Grid IT Services'*

Lot 34

MERRYDOWNS SD 882/22

EBV	793	3.12	6.22	0.07	19.3
	NZTW	WWTg-BV	LW8gBV	NLBgBV	EMA Actual
RANK	266/480	75/480	41/480	278/480	95/212
EMA/LW Ratio					0.319

Sire of Sire:

MD 450/18 Tw

Sire of Dam:

KD 36/18 Tw

Sire:

MD 457/20 Tr

Dam:

MD 357/20 Tr 0.1

Dam of Sire:

MD 752/16 Tw 0.32332

Dam of Dam:

MD 297/15 0.12222

Purchaser: _____ Price: _____

Lot 35

MERRYDOWNS SD 2843/22

EBV	733	2.35	4.39	0.14	19.8
	NZTW	WWTg-BV	LW8gBV	NLBgBV	EMA Actual
RANK	308/480	230/480	176/480	82/480	81/212
EMA/LW Ratio					0.307

Sire of Sire:

MD 450/18 Tw

Sire of Dam:

MD 435/10 Tw

Sire:

MD 457/20 Tr

Dam:

MD 553/16 Tr 0.22231

Dam of Sire:

MD 752/16 Tw 0.32332

Dam of Dam:

MD 744/13 Tr 0.2232

Purchaser: _____ Price: _____

Lot 36

MERRYDOWNS SD 584/22 TW

EBV	994	3.33	5.57	0.12	21.6
	NZTW	WWTg-BV	LW8gBV	NLBgBV	EMA Actual
RANK	140/480	54/480	80/480	126/480	31/212
EMA/LW Ratio					0.386

Sire of Sire:
MD 450/18 TW

Sire of Dam:
WD 760/17 Tw

Sire:
MD 457/20 Tr

Dam:
MD 197/19 Tr 0.22

Dam of Sire:
MD 752/16 Tw 0.32332

Dam of Dam:
MD 339/17 Tw 0.22223

Purchaser: _____ Price: _____

Lot 37

MERRYDOWNS SD 96/22 TW

EBV	1019	3.24	6.44	0.17	19.3
	NZTW	WWTg-BV	LW8gBV	NLBgBV	EMA Actual
RANK	127/480	64/480	28/480	35/480	95/212
EMA/LW Ratio					0.299

Sire of Sire:
MD 676/18 TW

Sire of Dam:
KD 36/18 Tw

Sire:
MD 597/20 Tr

Dam:
MD 270/20 Tw 0.2

Dam of Sire:
MD 209/15 Tr 0.13232

Dam of Dam:
MD 524/15 0.113322

Purchaser: _____ Price: _____

Lot 38

MERRYDOWNS SD 629/22

EBV	1236	3.08	5.16	-0.03	21
	NZTW	WWTg-BV	LW8gBV	NLBgBV	EMA Actual
RANK	26/480	82/480	113/480	470/480	38/212
EMA/LW Ratio					0.362

Sire of Sire:

CD 462/16 Tw

Sire of Dam:

WLH 70/16 Tw

Sire:

TRD 9/19 Tr

Dam:

MD 533/18 Tw 0.211

Dam of Sire:

TRD 125/15 ..2310

Dam of Dam:

MD 36/16 Tw 0.21221

Purchaser: _____ Price: _____

Lot 39

MERRYDOWNS SD 427/22 TW

EBV	745	1.06	1.75	0.03	17.4
	NZTW	WWTg-BV	LW8gBV	NLBgBV	EMA Actual
RANK	298/480	441/480	440/480	370/480	168/212
EMA/LW Ratio					0.335

Sire of Sire:

CD 462/16 TW

Sire of Dam:

MD 618/16 Tw

Sire:

TRD 9/19 Tr

Dam:

MD 245/18 Tw 0.112

Dam of Sire:

TRD 125/15 ..2310

Dam of Dam:

MD 743/13 Tw 0.122222

Purchaser: _____ Price: _____

Lot 40

MERRYDOWNS SD 756/22 TW

EBV	1129	2.67	4.83	0.01	20.3
	NZTW	WWTg-BV	LW8gBV	NLBgBV	EMA Actual
RANK	67/480	150/480	146/480	406/480	64/212
EMA/LW Ratio					0.331

Sire of Sire:

CD 462/16 TW

Sire of Dam:

WLH 231/16 Tw

Sire:

TRD 9/19 Tr

Dam:

MD 120/18 Tw 0.222

Dam of Sire:

TRD 125/15 ..2310

Dam of Dam:

MD 223/16 Tw 0.22221

Purchaser: _____ Price: _____

Lot 41

MERRYDOWNS SD 930/22

EBV	765	2.49	5.02	-0.02	19.8
	NZTW	WWTg-BV	LW8gBV	NLBgBV	EMA Actual
RANK	283/480	189/480	125/480	464/480	81/212
EMA/LW Ratio					0.345

Sire of Sire:

KD 36/18 Tw

Sire of Dam:

WD 808/17 Tw

Sire:

MD 702/20 Tw

Dam:

MD 878/20 Tw 0.1

Dam of Sire:

MD 357/17 0.12

Dam of Dam:

MD 209/18 0.22

Purchaser: _____ Price: _____

Lot 42

MERRYDOWNS SD 307/22 TW

EBV	1033	3.41	6.13	0.07	20.9
	NZTW	WWTg-BV	LW8gBV	NLBgBV	EMA Actual
RANK	124/480	47/480	46/480	242/480	44/212
EMA/LW Ratio					0.361

Sire of Sire:

MD 450/18 TW

Sire of Dam:

MD 858/17 Tw

Sire:

MD 457/20 Tr

Dam:

MD 435/19 Tr 0.12

Dam of Sire:

MD 752/16 Tw 0.32332

Dam of Dam:

MD 285/14 0.1222222

Purchaser: _____ Price: _____

Lot 43

MERRYDOWNS SD 121/22 TW

EBV	923	1.92	4.1	0	18.7
	NZTW	WWTg-BV	LW8gBV	NLBgBV	EMA Actual
RANK	183/480	325/480	220/480	430/480	123/212
EMA/LW Ratio					0.340

Sire of Sire:

CD 462/16 TW

Sire of Dam:

MD 338/15 Tw

Sire:

TRD 9/19 Tr

Dam:

MD 631/18 Tw 0.122

Dam of Sire:

TRD 125/15 ..2310

Dam of Dam:

MD 562/15 Tw 0.112

Purchaser: _____ Price: _____

Lot 44

MERRYDOWNS SD 922/22 TW

EBV	810	1.98	3.23	0.04	20.9
	NZTW	WWTg-BV	LW8gBV	NLBgBV	EMA Actual
RANK	259/480	312/480	325/480	344/480	44/212
EMA/LW Ratio					0.384

Sire of Sire:

WD 760/17 TW

Sire of Dam:

MD 618/16 Tw

Sire:

MD 67/19 Tw

Dam:

MD 1003/19 Tw 0.12

Dam of Sire:

MD 830/17 Tw 0.2212

Dam of Dam:

MD 284/15 Tw 0.122212

Purchaser: _____ Price: _____

Lot 45

MERRYDOWNS SD 34/22 TW

EBV	1193	3.48	4.99	0.05	22.5
	NZTW	WWTg-BV	LW8gBV	NLBgBV	EMA Actual
RANK	42/480	38/480	128/480	311/480	18/212
EMA/LW Ratio					0.384

Sire of Sire:

WD 760/17 TW

Sire of Dam:

MD 176/16 Tw

Sire:

MD 67/19 Tw

Dam:

MD 492/20 Tw 0.2

Dam of Sire:

MD 830/17 Tw 0.2212

Dam of Dam:

MD 123/18 Tw 0.212

Purchaser: _____ Price: _____

Lot 46

MERRYDOWNS SD 631/22 TW

EBV	1184	2.91	5.91	0.14	24
	NZTW	WWTg-BV	LW8gBV	NLBgBV	EMA Actual
RANK	44/480	104/480	59/480	85/480	7/212
EMA/LW Ratio					0.425

Sire of Sire:

HF K7/16 TW

Sire of Dam:

WD 808/17 Tw

Sire:

MD 1100/19 Tw

Dam:

MD 432/19 Tw 0.12

Dam of Sire:

MD 80/16 0.22

Dam of Dam:

MD 446/17 0.2

Purchaser: _____ Price: _____

Lot 47

MERRYDOWNS SD 2841/22 TR

EBV	1057	1.66	2.5	0.11	23.9
	NZTW	WWTg-BV	LW8gBV	NLBgBV	EMA Actual
RANK	101/480	368/480	394/480	150/480	8/212
EMA/LW Ratio					0.469

Sire of Sire:

CD 462/16 Tw

Sire of Dam:

MD 618/16 Tw

Sire:

TRD 9/19 Tr

Dam:

MD 187/18 Tw 0.133

Dam of Sire:

TRD 125/15 ..2310

Dam of Dam:

MD 132/14 Tw 0.21221

Purchaser: _____ Price: _____

Lot 48

MERRYDOWNS SD 1000/22

EBV	657	1.79	4	0.06	19.1
	NZTW	WWTg-BV	LW8gBV	NLBgBV	EMA Actual
RANK	362/480	352/480	236/480	291/480	109/212
EMA/LW Ratio					0.334

Sire of Sire:
KD 36/18 Tw

Sire of Dam:
WD 808/17 Tw

Sire:
MD 1095/20 Tw

Dam:
MD 1106/20 Tw 0.1

Dam of Sire:
MD 438/18 0.21

Dam of Dam:
MD 501/15 0.23122

Purchaser: _____ Price: _____

Lot 49

MERRYDOWNS SD 721/22 TW

EBV	853	2.73	4.83	0.18	18
	NZTW	WWTg-BV	LW8gBV	NLBgBV	EMA Actual
RANK	228/480	138/480	144/480	33/480	150/212
EMA/LW Ratio					0.316

Sire of Sire:
MD 450/18 TW

Sire of Dam:
MD 618/16 Tw

Sire:
MD 457/20 Tr

Dam:
MD 162/19 Tr 0.22

Dam of Sire:
MD 752/16 Tw 0.32332

Dam of Dam:
MD 295/13 Tw 0.233123

Purchaser: _____ Price: _____

Lot 50

MERRYDOWNS SD 9/22

EBV	912	2.81	5.43	-0.03	23.3
	NZTW	WWTg-BV	LW8gBV	NLBgBV	EMA Actual
RANK	187/480	123/480	90/480	466/480	14/212
EMA/LW Ratio					0.353

Sire of Sire:

KD 36/18 Tw

Sire of Dam:

WD 808/17 Tw

Sire:

MD 702/20 Tw

Dam:

MD 304/19 Tw 0.11

Dam of Sire:

MD 357/17 0.12

Dam of Dam:

MD 635/17 0.2131

Purchaser: _____ Price: _____

Lot 51

MERRYDOWNS SD 404/22

EBV	1080	3.87	7.38	0.08	20.2
	NZTW	WWTg-BV	LW8gBV	NLBgBV	EMA Actual
RANK	89/480	14/480	9/480	231/480	66/212
EMA/LW Ratio					0.304

Sire of Sire:

MD 450/18 Tw

Sire of Dam:

MD 858/17 Tw

Sire:

MD 457/20 Tr

Dam:

MD 807/19 Tr 0.21

Dam of Sire:

MD 752/16 Tw 0.32332

Dam of Dam:

MD 132/14 0.21221

Purchaser: _____ Price: _____

Lot 52

MERRYDOWNS SD 886/22

EBV	944	3.25	7.22	0.06	21.8
	NZTW	WWTg-BV	LW8gBV	NLBgBV	EMA Actual
RANK	166/480	62/480	12/480	290/480	26/212
EMA/LW Ratio					0.347

Sire of Sire:
ND216/14

Sire of Dam:
MD 508/13 Tw

Sire:
KD 36/18 Tw

Dam:
MD 407/15 0.222121

Dam of Sire:
KD 226/11

Dam of Dam:
MD 54/12 Tw 0.222

Purchaser: _____ Price: _____

Lot 53

MERRYDOWNS SD 2842/22 TW

EBV	1036	3.27	5.71	0.11	21.8
	NZTW	WWTg-BV	LW8gBV	NLBgBV	EMA Actual
RANK	121/480	57/480	74/480	163/480	26/212
EMA/LW Ratio					0.344

Sire of Sire:
MD 450/18 TW

Sire of Dam:
MD 858/17 Tw

Sire:
MD 457/20 Tr

Dam:
MD 909/19 Tr 0.12

Dam of Sire:
MD 752/16 Tw 0.32332

Dam of Dam:
MD 647/16 0.12122

Purchaser: _____ Price: _____

Lot 54

MERRYDOWNS SD 655/22 TW

EBV	1013	3.42	5.9	0.1	19.1
	NZTW	WWTg-BV	LW8gBV	NLBgBV	EMA Actual
RANK	130/480	43/480	61/480	186/480	109/212
EMA/LW Ratio					0.323

Sire of Sire:

MD 450/18 TW

Sire of Dam:

MD 858/17 Tw

Sire:

MD 457/20 Tr

Dam:

MD 626/19 Tr 0.12

Dam of Sire:

MD 752/16 Tw 0.32332

Dam of Dam:

MD 675/13 0.331222

Purchaser: _____ Price: _____

Lot 55

MERRYDOWNS SD 852/22 TW

EBV	1163	3.81	6.51	0.01	21.3
	NZTW	WWTg-BV	LW8gBV	NLBgBV	EMA Actual
RANK	55/480	16/480	23/480	415/480	36/212
EMA/LW Ratio					0.353

Sire of Sire:

KD 36/18 TW

Sire of Dam:

WD 760/17 Tw

Sire:

MD 702/20 Tw

Dam:

MD 1011/20 Tw 0.2

Dam of Sire:

MD 357/17 0.12

Dam of Dam:

MD 872/18 Tw 0.21

Purchaser: _____ Price: _____

Lot 56

MERRYDOWNS SD 197/22 TR

EBV	917	1.58	2.18	0.11	17
	NZTW	WWTg-BV	LW8gBV	NLBgBV	EMA Actual
RANK	185/480	383/480	418/480	150/480	182/212
EMA/LW Ratio					0.317

Sire of Sire:

CD 462/16 Tw

Sire of Dam:

MD 618/16 Tw

Sire:

TRD 9/19 Tr

Dam:

MD 187/18 Tw 0.133

Dam of Sire:

TRD 125/15 ..2310

Dam of Dam:

MD 132/14 Tw 0.21221

Purchaser: _____ Price: _____

Lot 57

MERRYDOWNS SD 366/22 TW

EBV	1236	2.54	4.03	0.07	24.2
	NZTW	WWTg-BV	LW8gBV	NLBgBV	EMA Actual
RANK	25/480	178/480	232/480	266/480	6/212
EMA/LW Ratio					0.418

Sire of Sire:

CD 462/16 TW

Sire of Dam:

WLH 70/16 Tw

Sire:

TRD 9/19 Tr

Dam:

MD 31/18 Tw 0.222

Dam of Sire:

TRD 125/15 ..2310

Dam of Dam:

MD 172/16 Tw 0.2

Purchaser: _____ Price: _____

Lot 58

MERRYDOWNS SD 674/22 TW

EBV	405	1.05	2.2	-0.01	17.8
	NZTW	WWTg-BV	LW8gBV	NLBgBV	EMA Actual
RANK	448/480	444/480	413/480	443/480	162/212
EMA/LW Ratio					0.323

Sire of Sire:

KD 36/18 TW

Sire of Dam:

MD 338/15 Tw

Sire:

MD 385/20 Tr

Dam:

MD 390/17 Tw 0.2222

Dam of Sire:

MD 659/16 0.1131

Dam of Dam:

MD 254/14 Tw 0.22102

Purchaser: _____ Price: _____

Lot 59

MERRYDOWNS SD 441/22 TW

EBV	1058	3.14	6.06	-0.01	20
	NZTW	WWTg-BV	LW8gBV	NLBgBV	EMA Actual
RANK	100/480	71/480	51/480	449/480	71/212
EMA/LW Ratio					0.325

Sire of Sire:

KD 36/18 TW

Sire of Dam:

MD 858/17 Tw

Sire:

MD 385/20 Tr

Dam:

MD 817/19 Tw 0.12

Dam of Sire:

MD 659/16 0.1131

Dam of Dam:

MD 578/14 0.22122

Purchaser: _____ Price: _____

Lot 60

MERRYDOWNS SD 205/22 TW

EBV	1194	2.41	4.2	-0.03	23.6
	NZTW	WWTg-BV	LW8gBV	NLBgBV	EMA Actual
RANK	41/480	212/480	207/480	471/480	9/212
EMA/LW Ratio					0.428

Sire of Sire:

CD 462/16 TW

Sire of Dam:

WLH 231/16 Tw

Sire:

TRD 9/19 Tr

Dam:

MD 201/18 Tw 0.122

Dam of Sire:

TRD 125/15 ..2310

Dam of Dam:

MD 288/16 Tw 0.22221

Purchaser: _____ Price: _____

Lot 61

MERRYDOWNS SD 85/22 TW

EBV	827	2.41	4.89	0.07	19.6
	NZTW	WWTg-BV	LW8gBV	NLBgBV	EMA Actual
RANK	248/480	213/480	142/480	263/480	85/212
EMA/LW Ratio					0.322

Sire of Sire:

KD 36/18 TW

Sire of Dam:

WD 808/17 Tw

Sire:

MD 1095/20 Tw

Dam:

MD 1028/20 Tw 0.2

Dam of Sire:

MD 438/18 0.21

Dam of Dam:

MD 795/18 0.121

Purchaser: _____ Price: _____

Lot 62

MERRYDOWNS SD 540/22

EBV	723	2	3.58	0.01	24.6
	NZTW	WWTg-BV	LW8gBV	NLBgBV	EMA Actual
RANK	317/480	308/480	286/480	417/480	4/212
EMA/LW Ratio					0.443

Sire of Sire:

KD 36/18 Tw

Sire of Dam:

MD 450/18 Tw

Sire:

MD 702/20 Tw

Dam:

MD 408/20 Tw 0.1

Dam of Sire:

MD 357/17 0.12

Dam of Dam:

MD 540/15 Tw 0.23231

Purchaser: _____ Price: _____

Lot 63

MERRYDOWNS SD 14/22 TW

EBV	1206	2.77	4.63	0.11	18
	NZTW	WWTg-BV	LW8gBV	NLBgBV	EMA Actual
RANK	36/480	132/480	157/480	166/480	150/212
EMA/LW Ratio					0.300

Sire of Sire:

CD 462/16 TW

Sire of Dam:

MD 176/16 Tw

Sire:

TRD 9/19 Tr

Dam:

MD 147/18 Tw 0.322

Dam of Sire:

TRD 125/15 ..2310

Dam of Dam:

MD 35/14 Tw 0.1222

Purchaser: _____ Price: _____



Lot A

THE LAND SD 202/22 TW

Sire of Sire:
KD 206/16 Tw

Sire of Dam:
MAC 14/13 Tw

Sire:
TRA 27/20

Dam:
MD 168/18 Tw 1222

Dam of Sire:
TRA 21/18

Dam of Dam:
MD 505/11 Tw 212232

Comment:
100 day weight 53.0 Kg.

Purchaser: _____ Price: _____

Lot B

THE LAND SD 257/22 TR

Sire of Sire:

KD 206/16 Tw

Sire of Dam:

MD 176/16 Tw

Sire:

TRA 27/20

Dam:

MD 395/17 22232

Dam of Sire:

TRA 21/18

Dam of Dam:

MD 152/11 Tw 332312

Comment:

100 day weight 44.5 Kg.

Purchaser: _____ Price: _____

Lot C

THE LAND SD 258/22 TW

Sire of Sire:

KD 206/16 Tw

Sire of Dam:

WLH 70/16 Tw

Sire:

TRA 27/20

Dam:

MD 499/18 2222

Dam of Sire:

TRA 21/18

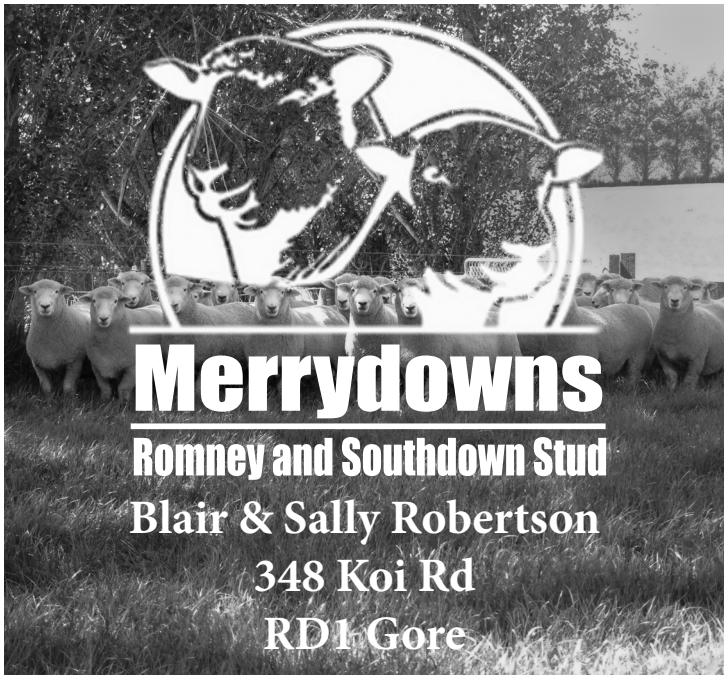
Dam of Dam:

MD 841/16 12

Comment:

100 day weight 48.5 Kg.

Purchaser: _____ Price: _____



Lot 64

MERRYVALE 31/22

EBV	1544	2.26	5.11	0.22
	MW+M+W	WWTgBV	LW8gBV	NLBgBV
RANK	39/109	31/109	28/109	24/109
NZWTA Wool Testing Results	Wool Actual (Kgs)	MFD	CofV	Curv
	3.9	43.5	77	18.1

Sire of Sire:

MA 94/16 Tw

Sire:

MA 110/19 Tw

Dam of Sire:

MA 479/14 Tw 0.12122

Purchaser: _____

Sire of Dam:

MD 1585/18 Tw

Dam:

MV 93/20 0.1

Dam of Dam:

WD 248/17 Tw 0.211

Price: _____

Lot 65	MERRYVALE 86/22 TR			
---------------	--------------------	--	--	--

EBV	1752	1.45	2.7	0.22
	MW+M+W	WWTgBV	LW8gBV	NLBgBV
RANK	23/109	51/109	57/109	26/109

NZWTA Wool Testing Results	Wool Actual (Kgs)	MFD	CofV	Curv
	3.9	45.5	43.8	20

Sire of Sire:
RK 338/17 Tw

Sire:
RK 7/19

Dam of Sire:
RK 138/11 Tw 0.122223122

Purchaser: _____ Price: _____

Sire of Dam:
W 442/13 Tw

Dam:
MV 86/18 0.133

Dam of Dam:
MD 1563/12 Tw ..23213

Lot 66	MERRYDOWNS 1671/22 TW			
---------------	-----------------------	--	--	--

EBV	1178	1.88	4.57	0.29
	MW+M+W	WWTgBV	LW8gBV	NLBgBV
RANK	448/643	333/643	255/643	23/643

NZWTA Wool Testing Results	Wool Actual (Kgs)	MFD	CofV	Curv
	4.2	39.1	52	18.1

Sire of Sire:
MA 94/16 Tw

Sire:
MA 110/19 Tw

Dam of Sire:
MA 479/14 Tw 0.12122

Purchaser: _____ Price: _____

Sire of Dam:
HE 321/17 Tw

Dam:
MD 1620/20 Tr 0.2

Dam of Dam:
MD 2000/15 Tw 0.221332

Lot 67

MERRYDOWNS 1970/22 TR

EBV	2484	3.11	5.35	0.27
	MW+M+W	WWTgBV	LW8gBV	NLBgBV
RANK	19/643	79/643	148/643	71/643

NZWTA Wool Testing Results	Wool Actual (Kgs)	MFD	CofV	Curv
	4.8	38.9	34.2	20.8

Sire of Sire:
MD 1585/18 Tw

Sire:
MD 2434/20 Tr

Dam of Sire:
MD 1871/17 0.1333

Purchaser: _____ Price: _____

Sire of Dam:
MD 1465/16

Dam:
MD 1122/19 Tw 0.23

Dam of Dam:
MD 1504/17 Tw 0.2222

Lot 68

MERRYDOWNS 1723/22 TW

EBV	1821	1.61	3.91	0.21
	MW+M+W	WWTgBV	LW8gBV	NLBgBV
RANK	174/643	416/643	363/643	203/643

NZWTA Wool Testing Results	Wool Actual (Kgs)	MFD	CofV	Curv
	4.4	40.1	47.5	21

Sire of Sire:
MD 1585/18 Tw

Sire:
MD 2434/20 Tr

Dam of Sire:
MD 1871/17 0.1333

Purchaser: _____ Price: _____

Sire of Dam:
FAR 40/16 Tw

Dam:
MD 2428/18 Tw 0.122

Dam of Dam:
MD 1928/13 Tw 0.222222

Lot 69		MERRYVALE 8/22 TW		
EBV	1298	0.9	3.66	0.22
	MW+M+W	WWTgBV	LW8gBV	NLBgBV
RANK	52/109	60/109	47/109	25/109
NZWTA Wool Testing Results	Wool Actual (Kgs)	MFD	CofV	Curv
	4.1	46.7	53.7	20.7

Sire of Sire:
MD 802/14 Tw

Sire:
EB 60/19 Tw

Dam of Sire:
EB 110/15 Tw 0.222322

Purchaser: _____ Price: _____

Sire of Dam:
FAR 40/16 Tw

Dam:
MV 38/20 Tw 0.2

Dam of Dam:
MV 11/17 Tr 0.221

Lot 70		MERRYDOWNS 1436/22 TW		
EBV	1162	1.49	4.19	0.28
	MW+M+W	WWTgBV	LW8gBV	NLBgBV
RANK	452/643	458/643	314/643	34/643
NZWTA Wool Testing Results	Wool Actual (Kgs)	MFD	CofV	Curv
	4.7	43.8	57.9	18.4

Sire of Sire:
MA 94/16 Tw

Sire:
MA 110/19 Tw

Dam of Sire:
MA 479/14 Tw 0.12122

Purchaser: _____ Price: _____

Sire of Dam:
MD 954/16 Tw

Dam:
MD 1898/20 Tw 0.2

Dam of Dam:
MD 2384/18 Tw 0.222

Lot 71

MERRYDOWNS 2783/22 TW

EBV	2107	2.93	6.49	0.19
	MW+M+W	WWTgBV	LW8gBV	NLBgBV
RANK	94/643	94/643	68/643	303/643

NZWTA Wool Testing Results	Wool Actual (Kgs)	MFD	CofV	Curv
	4.3	40.6	61.5	19.1

Sire of Sire:

MD 902/16 Tw

Sire of Dam:

MD 1537/15 Tw

Sire:

MD 1585/18 Tw

Dam:

MD 2026/19 Tw 0.22

Dam of Sire:

MD 1147/16 Tw 0.2

Dam of Dam:

MD 1148/17 Tw 0.223

Purchaser: _____ Price: _____

Lot 72

MERRYDOWNS 1967/22 TW

EBV	2844	2.55	4.72	0.27
	MW+M+W	WWTgBV	LW8gBV	NLBgBV
RANK	1/643	145/643	229/643	60/643

NZWTA Wool Testing Results	Wool Actual (Kgs)	MFD	CofV	Curv
	4	37.4	62.2	24.8

Sire of Sire:

MD 1585/18 Tw

Sire of Dam:

FAR 40/16 Tw

Sire:

MD 2434/20 Tr

Dam:

MD 1383/18 Qd 0.222

Dam of Sire:

MD 1871/17 0.1333

Dam of Dam:

MD 2307/13 Tw 0.2224

Purchaser: _____ Price: _____

Lot 73		MERRYDOWNS 2251/22 TW		
EBV	2022	2.22	4.45	0.19
	MW+M+W	WWTgBV	LW8gBV	NLBgBV
RANK	114/643	232/643	272/643	289/643
NZWTA Wool Testing Results	Wool Actual (Kgs)	MFD	CofV	Curv
	4.2	38.6	40.4	16.5

Sire of Sire:

MD 902/16 Tw

Sire:

MD 1585/18 Tw

Dam of Sire:

MD 1147/16 Tw 0.2

Purchaser: _____ Price: _____

Sire of Dam:

WIM 1166/15

Dam:

MD 1846/19 0.22

Dam of Dam:

MD 1838/17 Tw 0.121

Lot 74		MERRYDOWNS 2776/22 TW		
EBV	2064	2.41	4.6	0.21
	MW+M+W	WWTgBV	LW8gBV	NLBgBV
RANK	105/643	174/643	249/643	201/643
NZWTA Wool Testing Results	Wool Actual (Kgs)	MFD	CofV	Curv
	4.4	41.2	62	18.4

Sire of Sire:

RK 338/17 Tw

Sire:

RK 7/19

Dam of Sire:

RK 138/11 Tw 0.122223122

Purchaser: _____ Price: _____

Sire of Dam:

MD 1043/16 Tw

Dam:

MD 1793/19 Tr 0.22

Dam of Dam:

MD 948/15 Tw 0.2333

Lot 75

MERRYVALE 66/22 TW

EBV	2745	4.54	7.31	0.17
	MW+M+W	WWTgBV	LW8gBV	NLBgBV
RANK	2/109	1/109	5/109	42/109

NZWTA Wool Testing Results	Wool Actual (Kgs)	MFD	CofV	Curv
	4	42.7	67.3	17.7

Sire of Sire:

MD 1043/16 Tw

Sire of Dam:

WIM 1166/15

Sire:

MV 75/20 Tr

Dam:

MV 170/19 Tw 0.12

Dam of Sire:

WD 62/17 Tw 0.231

Dam of Dam:

MV 6/15 Tw 0.22221

Purchaser: _____ Price: _____

Lot 76

MERRYDOWNS 1449/22 TW

EBV	1477	2.61	6.47	0.22
	MW+M+W	WWTgBV	LW8gBV	NLBgBV
RANK	311/643	135/643	70/643	194/643

NZWTA Wool Testing Results	Wool Actual (Kgs)	MFD	CofV	Curv
	4.1	38.5	59.8	20.4

Sire of Sire:

MA 94/16 Tw

Sire of Dam:

MD 1065/18 Tw

Sire:

MA 110/19 Tw

Dam:

MD 1594/20 Tw 0.2

Dam of Sire:

MA 479/14 Tw 0.12122

Dam of Dam:

MD 1708/15 Tw 0.2222

Purchaser: _____ Price: _____

Lot 77	MERRYDOWNS 2168/22 TW			
---------------	-----------------------	--	--	--

EBV	1892	3.29	6.6	0.25
	MW+M+W	WWTgBV	LW8gBV	NLBgBV
RANK	152/643	59/643	63/643	111/643

NZWTA Wool Testing Results	Wool Actual (Kgs)	MFD	CofV	Curv
	4	37.6	51.5	17

Sire of Sire:
MD 1043/16 Tw

Sire:
MV 75/20 Tr

Dam of Sire:
WD 62/17 Tw 0.231

Purchaser: _____ Price: _____

Sire of Dam:
W 442/13 Tw

Dam:
MD 2513/18 Tw 0.212

Dam of Dam:
MD 1573/15 Tw 0.223

Lot 78	MERRYDOWNS 1785/22 TW			
---------------	-----------------------	--	--	--

EBV	2339	2.84	6.1	0.25
	MW+M+W	WWTgBV	LW8gBV	NLBgBV
RANK	47/643	108/643	90/643	106/643

NZWTA Wool Testing Results	Wool Actual (Kgs)	MFD	CofV	Curv
	4.2	39.6	55.2	20.9

Sire of Sire:
WIM 1166/15

Sire:
MD 1529/19 Tw

Dam of Sire:
MD 1351/17 Tw 0.22

Purchaser: _____ Price: _____

Sire of Dam:
MD 1624/17 Tr

Dam:
MD 1676/19 Tw 0.22

Dam of Dam:
MD 936/16 Tw 0.22

Lot 79	MERRYDOWNS 1722/22 TW			
---------------	-----------------------	--	--	--

EBV	1638	1.35	2.01	0.24
	MW+M+W	WWTgBV	LW8gBV	NLBgBV
RANK	245/643	488/643	610/643	128/643

NZWTA Wool Testing Results	Wool Actual (Kgs)	MFD	CofV	Curv
	3.9	35.7	51.1	20.1

Sire of Sire:

MD 2273/15

Sire:

MD 1897/19 Tw

Dam of Sire:

MD 1053/17 Tw 0.2232

Purchaser: _____ Price: _____

Sire of Dam:

W 442/13 Tw

Dam:

MD 2151/18 Tr 0.222

Dam of Dam:

MD 2542/13 Tr 0.122322

Lot 80	MERRYDOWNS 1728/22 TW			
---------------	-----------------------	--	--	--

EBV	1745	2.94	6.25	0.2
	MW+M+W	WWTgBV	LW8gBV	NLBgBV
RANK	208/643	92/643	79/643	271/643

NZWTA Wool Testing Results	Wool Actual (Kgs)	MFD	CofV	Curv
	3.4	39.1	58	20.6

Sire of Sire:

MD 1043/16 Tw

Sire:

MV 75/20 Tr

Dam of Sire:

WD 62/17 Tw 0.231

Purchaser: _____ Price: _____

Sire of Dam:

W 442/13 Tw

Dam:

MD 1781/18 0.212

Dam of Dam:

MD 1826/14 Tw 0.121

Lot 81		MERRYDOWNS 1738/22 TW		
EBV	1865	3.12	6.63	0.16
	MW+M+W	WWTgBV	LW8gBV	NLBgBV
RANK	162/643	76/643	60/643	406/643
NZWTA Wool Testing Results	Wool Actual (Kgs)	MFD	CofV	Curv
	3.6	38.2	59.8	16.6

Sire of Sire:

MD 902/16 Tw

Sire:

MD 1585/18 Tw

Dam of Sire:

MD 1147/16 Tw 0.2

Purchaser: _____ Price: _____

Sire of Dam:

MD 1292/14 Tw

Dam:

MD 1252/19 0.12

Dam of Dam:

MD 1170/17 Tw 0.1

Lot 82		MERRYVALE 101/22 TW		
EBV	1921	3.4	6.16	0.24
	MW+M+W	WWTgBV	LW8gBV	NLBgBV
RANK	18/109	10/109	16/109	13/109
NZWTA Wool Testing Results	Wool Actual (Kgs)	MFD	CofV	Curv
	4	42.1	60.7	18.5

Sire of Sire:

MD 1585/18 Tw

Sire:

MD 2434/20 Tr

Dam of Sire:

MD 1871/17 0.1333

Purchaser: _____ Price: _____

Sire of Dam:

MD 2273/15

Dam:

MV 157/19 Tw 0.22

Dam of Dam:

WD 274/17 Tw 0.23

Lot 83	MERRYDOWNS 1402/22 TW			
---------------	-----------------------	--	--	--

EBV	1883	2.47	4.64	0.27
	MW+M+W	WWTgBV	LW8gBV	NLBgBV
RANK	154/643	163/643	242/643	46/643

NZWTA Wool Testing Results	Wool Actual (Kgs)	MFD	CofV	Curv
	4.2	41.7	57.7	22.1

Sire of Sire:

MA 94/16 Tw

Sire:

MA 110/19 Tw

Dam of Sire:

MA 479/14 Tw 0.12122

Purchaser: _____ Price: _____

Sire of Dam:

MD 1014/18 Tw

Dam:

MD 2125/20 Tw 0.2

Dam of Dam:

MD 2332/18 Tr 0.21

Lot 84	MERRYDOWNS 1966/22 TW			
---------------	-----------------------	--	--	--

EBV	2545	2.36	5.49	0.27
	MW+M+W	WWTgBV	LW8gBV	NLBgBV
RANK	14/643	185/643	137/643	60/643

NZWTA Wool Testing Results	Wool Actual (Kgs)	MFD	CofV	Curv
	4.1	43.4	54.4	17.4

Sire of Sire:

MD 1585/18 Tw

Sire:

MD 2434/20 Tr

Dam of Sire:

MD 1871/17 0.1333

Purchaser: _____ Price: _____

Sire of Dam:

FAR 40/16 Tw

Dam:

MD 1383/18 Qd 0.222

Dam of Dam:

MD 2307/13 Tw 0.2224

Lot 85

MERRYVALE 91/22 TW

EBV	1699	3.16	6.44	0.22
	MW+M+W	WWTgBV	LW8gBV	NLBgBV
RANK	27/109	14/109	13/109	21/109
NZWTA Wool Testing Results	Wool Actual (Kgs)	MFD	CofV	Curv
	4.4	42.9	46	19.8

Sire of Sire:

MD 1043/16 Tw

Sire:

MD 2036/18 Tw

Dam of Sire:

MD 1198/13 Tw 0.2222

Purchaser: _____ Price: _____

Sire of Dam:

MD 1624/17 Tr

Dam:

MV 211/19 Tw 0.22

Dam of Dam:

WD 379/17 0.2

Lot 86

MERRYDOWNS 2777/22 TW

EBV	1980	2.37	4.87	0.21
	MW+M+W	WWTgBV	LW8gBV	NLBgBV
RANK	126/643	183/643	204/643	201/643
NZWTA Wool Testing Results	Wool Actual (Kgs)	MFD	CofV	Curv
	4.2	39.5	48.7	20.5

Sire of Sire:

RK 338/17 Tw

Sire:

RK 7/19

Dam of Sire:

RK 138/11 Tw 0.122223122

Purchaser: _____ Price: _____

Sire of Dam:

MD 1043/16 Tw

Dam:

MD 1793/19 Tr 0.22

Dam of Dam:

MD 948/15 Tw 0.2333

Lot 87

MERRYDOWNS 1310/22 TW

EBV	1636	2.87	6.37	0.11
	MW+M+W	WWTgBV	LW8gBV	NLBgBV
RANK	247/643	102/643	75/643	531/643

NZWTA Wool Testing Results	Wool Actual (Kgs)	MFD	CofV	Curv
	4.1	39.4	42.3	18.4

Sire of Sire:

RK 284/17 Tw

Sire:

RK 393/19 Tw

Dam of Sire:

RK 302/17 Tw 0.2232

Purchaser: _____ Price: _____

Sire of Dam:

MD 1585/18 Tw

Dam:

MD 2509/20 Tw 0.2

Dam of Dam:

MD 2144/17 0.221

Lot 88

MERRYDOWNS 2793/22 TW

EBV	1763	2.64	4.44	0.24
	MW+M+W	WWTgBV	LW8gBV	NLBgBV
RANK	197/643	130/643	278/643	137/643

NZWTA Wool Testing Results	Wool Actual (Kgs)	MFD	CofV	Curv
	3.9	36	62.5	19.2

Sire of Sire:

MD 1585/18 Tw

Sire:

MD 2434/20 Tr

Dam of Sire:

MD 1871/17 0.1333

Purchaser: _____ Price: _____

Sire of Dam:

MD 2273/15

Dam:

MD 2164/19 0.22

Dam of Dam:

MD 1486/15 Tw 0.121

Lot 89		MERRYDOWNS 1343/22 TW		
EBV	1195	0.89	3.51	0.26
	MW+M+W	WWTgBV	LW8gBV	NLBgBV
RANK	440/643	589/643	417/643	95/643
NZWTA Wool Testing Results	Wool Actual (Kgs)	MFD	CofV	Curv
	4.3	41.2	49.5	25.7

Sire of Sire:
MD 802/14 Tw

Sire:
EB 60/19 Tw

Dam of Sire:
EB 110/15 Tw 0.222322

Purchaser: _____ Price: _____

Sire of Dam:
MD 1014/18 Tw

Dam:
MD 1930/20 Tr 0.2

Dam of Dam:
MD 1659/15 Tw 0.2323

Lot 90		MERRYDOWNS 1737/22 TW		
EBV	2630	2.97	6.8	0.2
	MW+M+W	WWTgBV	LW8gBV	NLBgBV
RANK	8/643	88/643	45/643	243/643
NZWTA Wool Testing Results	Wool Actual (Kgs)	MFD	CofV	Curv
	4.5	44.4	57.1	19.1

Sire of Sire:
WIM 1166/15

Sire:
MD 1529/19 Tw

Dam of Sire:
MD 1351/17 Tw 0.22

Purchaser: _____ Price: _____

Sire of Dam:
FAR 40/16 Tw

Dam:
MD 2174/19 Tw 0.22

Dam of Dam:
MD 1922/15 Tw 0.2323

Lot 91

MERRYDOWNS 1909/22 TW

EBV	2303	4.59	7.91	0.19
	MW+M+W	WWTgBV	LW8gBV	NLBgBV
RANK	55/643	10/643	18/643	306/643

NZWTA Wool Testing Results	Wool Actual (Kgs)	MFD	CofV	Curv
	3.7	44.3	62.7	19.2

Sire of Sire:
MD 1043/16 Tw

Sire:
MV 75/20 Tr

Dam of Sire:
WD 62/17 Tw 0.231

Purchaser: _____ Price: _____

Sire of Dam:
WIM 1166/15

Dam:
MD 1942/18 Tr 0.212

Dam of Dam:
MD 1906/16 Tr 0.32222

Lot 92

MERRYDOWNS 1802/22 TW

EBV	1986	2.38	3.75	0.14
	MW+M+W	WWTgBV	LW8gBV	NLBgBV
RANK	124/643	181/643	390/643	453/643

NZWTA Wool Testing Results	Wool Actual (Kgs)	MFD	CofV	Curv
	4	40	47.9	17.3

Sire of Sire:
RK 338/17 Tw

Sire:
RK 7/19

Dam of Sire:
RK 138/11 Tw 0.122223122

Purchaser: _____ Price: _____

Sire of Dam:
MD 902/16 Tw

Dam:
MD 1885/19 Tw 0.12

Dam of Dam:
MD 1663/15 Tw 0.222

Lot 93**MERRYDOWNS 1839/22 TW**

EBV	1405	1.86	4.39	0.18
	MW+M+W	WWTgBV	LW8gBV	NLBgBV
RANK	345/643	343/643	283/643	345/643
NZWTA Wool Testing Results	Wool Actual (Kgs)	MFD	CofV	Curv
	3.7	40.4	43.5	18.8

Sire of Sire:

MD 1043/16 Tw

Sire:

MD 2036/18 Tw

Dam of Sire:

MD 1198/13 Tw 0.2222

Purchaser: _____

Sire of Dam:

FAR 40/16 Tw

Dam:

MD 1135/19 Tw 0.22

Dam of Dam:

MD 1270/16 Tw 0.22

Price: _____



Lot 94

MERRYDOWNS SD 936/22

EBV	1353	4.12	7.66	0.13	22.4
	NZTW	WWTg-BV	LW8gBV	NLBgBV	EMA Actual
RANK	11/480	9/480	6/480	101/480	21/212
EMA/LW Ratio					0.331

Sire of Sire:

MD 450/18 Tw

Sire of Dam:

MD 618/16 Tw

Sire:

MD 457/20 Tr

Dam:

MD 539/20 Tr 0.1

Dam of Sire:

MD 752/16 Tw 0.32332

Dam of Dam:

MD 93/18 Tw 0.212

Purchaser: _____ Price: _____

Lot 95

MERRYDOWNS SD 1191/22

EBV	1056	2.55	4.04	0.08	22.7
	NZTW	WWTg-BV	LW8gBV	NLBgBV	EMA Actual
RANK	103/480	176/480	229/480	227/480	17/212
EMA/LW Ratio					0.358

Sire of Sire:

HF K7/16 Tw

Sire of Dam:

WD 808/17 Tw

Sire:

MD 1100/19 Tw

Dam:

MD 118/19 Tw 0.21

Dam of Sire:

MD 80/16 0.22

Dam of Dam:

MD 779/17 0.2

Purchaser: _____ Price: _____

Lot 96

MERRYDOWNS SD 806/22 TW

EBV	1498	4.45	9.19	-0.01	25.2
	NZTW	WWTg-BV	LW8gBV	NLBgBV	EMA Actual
RANK	3/480	3/480	1/480	448/480	2/212
EMA/LW Ratio					0.367

Sire of Sire:

KD 36/18 TW

Sire of Dam:

MAC 14/13 Tw

Sire:

MD 702/20 Tw

Dam:

MD 189/15 Tw 0.112312

Dam of Sire:

MD 357/17 0.12

Dam of Dam:

MD 721/13 Tw 0.2222

Purchaser: _____ Price: _____

Lot 97

MERRYDOWNS SD 247/22 TW

EBV	782	2.73	4.22	0.06	19.6
	NZTW	WWTg-BV	LW8gBV	NLBgBV	EMA Actual
RANK	272/480	144/480	203/480	298/480	85/212
EMA/LW Ratio					0.357

Sire of Sire:

MD 450/18 TW

Sire of Dam:

MD 858/17 Tw

Sire:

MD 457/20 Tr

Dam:

MD 822/19 Tr 0.12

Dam of Sire:

MD 752/16 Tw 0.32332

Dam of Dam:

MD 672/15 0.222

Purchaser: _____ Price: _____

Lot 98

MERRYDOWNS SD 49/22 TW

EBV	1113	2.55	3.93	0.09	19.3
	NZTW	WWTg-BV	LW8gBV	NLBgBV	EMA Actual
RANK	74/480	173/480	242/480	198/480	95/212
EMA/LW Ratio					0.368

Sire of Sire:

CD 462/16 TW

Sire of Dam:

WLH 70/16 Tw

Sire:

TRD 9/19 Tr

Dam:

MD 311/18 Tw 0.232

Dam of Sire:

TRD 125/15 ..2310

Dam of Dam:

MD 139/16 Tw 0.22231

Purchaser: _____ Price: _____

Lot 99

MERRYDOWNS SD 321/22 TW

EBV	1340	3.12	5.47	0.12	23.6
	NZTW	WWTg-BV	LW8gBV	NLBgBV	EMA Actual
RANK	13/480	76/480	87/480	121/480	9/212
EMA/LW Ratio					0.411

Sire of Sire:

HF K7/16 TW

Sire of Dam:

MD 564/15 Tw

Sire:

MD 1100/19 Tw

Dam:

MD 324/16 Tw 0.12222

Dam of Sire:

MD 80/16 0.22

Dam of Dam:

MD 578/10 Tw 0.22222

Purchaser: _____ Price: _____

Lot 100

MERRYDOWNS SD 63/22 TW

EBV	936	2.42	4.19	0.05	21.5
	NZTW	WWTg-BV	LW8gBV	NLBgBV	EMA Actual
RANK	175/480	211/480	210/480	312/480	35/212
EMA/LW Ratio					0.370

Sire of Sire:

KD 36/18 TW

Sire of Dam:

MD 618/16 Tw

Sire:

MD 702/20 Tw

Dam:

MD 126/19 Tw 0.22

Dam of Sire:

MD 357/17 0.12

Dam of Dam:

MD 193/15 Tw 0.21121

Purchaser: _____ Price: _____

Lot 101

MERRYDOWNS SD 718/22 TW

EBV	991	2.71	5.37	0.15	17.4
	NZTW	WWTg-BV	LW8gBV	NLBgBV	EMA Actual
RANK	143/480	147/480	94/480	74/480	168/212
EMA/LW Ratio					0.308

Sire of Sire:

MD 676/18 TW

Sire of Dam:

WD 808/17 Tw

Sire:

MD 597/20 Tr

Dam:

MD 60/19 Tw 0.22

Dam of Sire:

MD 209/15 Tr 0.13232

Dam of Dam:

MD 355/17 0.2212

Purchaser: _____ Price: _____

Lot 102

MERRYDOWNS SD 1105/22 TR

EBV	793	2.01	3.7	0.25	18.4
	NZTW	WWTg-BV	LW8gBV	NLBgBV	EMA Actual
RANK	265/480	303/480	272/480	3/480	136/212
EMA/LW Ratio					0.334

Sire of Sire:

MD 450/18 Tw

Sire of Dam:

MD 618/16 Tw

Sire:

MD 457/20 Tr

Dam:

MD 159/19 Tr 0.13

Dam of Sire:

MD 752/16 Tw 0.32332

Dam of Dam:

MD 5/10 Tw 0.22422232

Purchaser: _____ Price: _____

Lot 103

MERRYDOWNS SD 731/22 TW

EBV	1009	3.1	3.91	0	22.1
	NZTW	WWTg-BV	LW8gBV	NLBgBV	EMA Actual
RANK	134/480	81/480	244/480	429/480	24/212
EMA/LW Ratio					0.405

Sire of Sire:

WD 760/17 TW

Sire of Dam:

KD 36/18 Tw

Sire:

MD 67/19 Tw

Dam:

MD 879/20 Tw 0.2

Dam of Sire:

MD 830/17 Tw 0.2212

Dam of Dam:

MD 571/18 0.212

Purchaser: _____ Price: _____

Lot 104

MERRYDOWNS SD 254/22

EBV	1035	2.54	5.15	0.07	23.6
	NZTW	WWTg-BV	LW8gBV	NLBgBV	EMA Actual
RANK	122/480	177/480	114/480	253/480	9/212
EMA/LW Ratio					0.364

Sire of Sire:

MD 176/16 Tw

Sire of Dam:

WD 808/17 Tw

Sire:

MD 643/19 Tw

Dam:

MD 730/19 0.21

Dam of Sire:

MD 778/16 Tw 0.12

Dam of Dam:

MD 428/17 0.22

Purchaser: _____ Price: _____

Lot 105

MERRYDOWNS SD 460/22

EBV	859	2.44	3.62	0.13	19.2
	NZTW	WWTg-BV	LW8gBV	NLBgBV	EMA Actual
RANK	225/480	202/480	279/480	115/480	107/212
EMA/LW Ratio					0.343

Sire of Sire:

MD 450/18 Tw

Sire of Dam:

MD 176/16 Tw

Sire:

MD 457/20 Tr

Dam:

MD 261/19 Tr 0.21

Dam of Sire:

MD 752/16 Tw 0.32332

Dam of Dam:

MD 367/15 Tw 0.122222

Purchaser: _____ Price: _____

Lot 106

MERRYDOWNS SD 625/22 TW

EBV	733	2.48	4.98	0.01	21.6
	NZTW	WWTg-BV	LW8gBV	NLBgBV	EMA Actual
RANK	305/480	195/480	129/480	421/480	31/212
EMA/LW Ratio					0.366

Sire of Sire:

KD 36/18 TW

Sire of Dam:

MAC 14/13 Tw

Sire:

MD 702/20 Tw

Dam:

MD 881/18 Tw 0.212

Dam of Sire:

MD 357/17 0.12

Dam of Dam:

MD 464/10 Tw 0.2312121

Purchaser: _____ Price: _____

Lot 107

MERRYDOWNS SD 860/22

EBV	1183	3.26	5.69	0.1	21
	NZTW	WWTg-BV	LW8gBV	NLBgBV	EMA Actual
RANK	46/480	59/480	75/480	171/480	38/212
EMA/LW Ratio					0.366

Sire of Sire:

MD 450/18 Tw

Sire of Dam:

MD 176/16 Tw

Sire:

MD 457/20 Tr

Dam:

MD 725/19 Tr 0.11

Dam of Sire:

MD 752/16 Tw 0.32332

Dam of Dam:

MD 211/14 Tw 0.21223

Purchaser: _____ Price: _____

Lot 108

MERRYDOWNS SD 754/22 TW

EBV	936	2.84	4.21	0.04	20.2
	NZTW	WWTg-BV	LW8gBV	NLBgBV	EMA Actual
RANK	174/480	118/480	205/480	337/480	66/212
EMA/LW Ratio					0.345

Sire of Sire:

WD 760/17 TW

Sire of Dam:

MD 176/16 Tw

Sire:

MD 67/19 Tw

Dam:

MD 172/20 Tw 0.2

Dam of Sire:

MD 830/17 Tw 0.2212

Dam of Dam:

MD 452/16 Tw 0.22222

Purchaser: _____ Price: _____

Lot 109

MERRYDOWNS SD 380/22 TW

EBV	1034	2.69	4.97	0.16	18.6
	NZTW	WWTg-BV	LW8gBV	NLBgBV	EMA Actual
RANK	123/480	149/480	130/480	48/480	125/212
EMA/LW Ratio					0.345

Sire of Sire:

HF K7/16 TW

Sire of Dam:

MTA 22/15

Sire:

MD 1100/19 Tw

Dam:

MD 560/17 Tw 0.2122

Dam of Sire:

MD 80/16 0.22

Dam of Dam:

MD 827/11 0.122213

Purchaser: _____ Price: _____

Lot 110

MERRYDOWNS SD 263/22 TW

EBV	963	2.37	4.24	0.1	18
	NZTW	WWTg-BV	LW8gBV	NLBgBV	EMA Actual
RANK	157/480	222/480	200/480	179/480	150/212
EMA/LW Ratio					0.330

Sire of Sire:
HF K7/16 TW

Sire of Dam:
MD 450/18 Tw

Sire:
MD 1100/19 Tw

Dam:
MD 189/20 Tw 0.2

Dam of Sire:
MD 80/16 0.22

Dam of Dam:
MD 367/15 Tw 0.122222

Purchaser: _____ Price: _____

Lot 111

MERRYDOWNS SD 810/22 TW

EBV	909	1.48	3.81	0.12	17.9
	NZTW	WWTg-BV	LW8gBV	NLBgBV	EMA Actual
RANK	191/480	398/480	261/480	127/480	160/212
EMA/LW Ratio					0.326

Sire of Sire:
CD 462/16 TW

Sire of Dam:
MD 618/16 Tw

Sire:
TRD 9/19 Tr

Dam:
MD 736/18 Tw 0.322

Dam of Sire:
TRD 125/15 ..2310

Dam of Dam:
MD 334/15 Tw 0.12

Purchaser: _____ Price: _____

Lot 112

MERRYDOWNS SD 851/22

EBV	887	2.61	4.3	0.05	18.5
	NZTW	WWTg-BV	LW8gBV	NLBgBV	EMA Actual
RANK	209/480	161/480	187/480	316/480	129/212
EMA/LW Ratio					0.331

Sire of Sire:

KD 36/18 Tw

Sire of Dam:

MD 176/16 Tw

Sire:

MD 1095/20 Tw

Dam:

MD 173/20 Tw 0.1

Dam of Sire:

MD 438/18 0.21

Dam of Dam:

MD 452/16 Tw 0.22222

Purchaser: _____ Price: _____

Lot 113

MERRYDOWNS SD 294/22 TW

EBV	1048	3.29	6.17	-0.03	22.5
	NZTW	WWTg-BV	LW8gBV	NLBgBV	EMA Actual
RANK	114/480	56/480	45/480	467/480	18/212
EMA/LW Ratio					0.340

Sire of Sire:

KD 36/18 TW

Sire of Dam:

WD 760/17 Tw

Sire:

MD 385/20 Tr

Dam:

MD 220/20 Tw 0.2

Dam of Sire:

MD 659/16 0.1131

Dam of Dam:

MD 731/15 Tw 0.222312

Purchaser: _____ Price: _____

Lot 114

MERRYDOWNS SD 581/22 TW

EBV	815	2.3	3.39	0.04	19.9
	NZTW	WWTg-BV	LW8gBV	NLBgBV	EMA Actual
RANK	255/480	243/480	309/480	358/480	72/212
EMA/LW Ratio					0.363

Sire of Sire:

WD 760/17 TW

Sire of Dam:

MD 618/16 Tw

Sire:

MD 67/19 Tw

Dam:

MD 922/19 Tw 0.12

Dam of Sire:

MD 830/17 Tw 0.2212

Dam of Dam:

MD 26/16 Tw 0.222

Purchaser: _____ Price: _____

Lot 115

MERRYDOWNS SD 821/22 TW

EBV	1217	3.15	5.24	0.11	22.2
	NZTW	WWTg-BV	LW8gBV	NLBgBV	EMA Actual
RANK	31/480	69/480	104/480	154/480	23/212
EMA/LW Ratio					0.376

Sire of Sire:

KD 36/18 TW

Sire of Dam:

MD 618/16 Tw

Sire:

MD 702/20 Tw

Dam:

MD 855/19 Tw 0.22

Dam of Sire:

MD 357/17 0.12

Dam of Dam:

MD 524/16 Tw 0.2233

Purchaser: _____ Price: _____

Lot 116

MERRYDOWNS SD 750/22 TW

EBV	872	2.96	6.18	0.03	23
	NZTW	WWTg-BV	LW8gBV	NLBgBV	EMA Actual
RANK	218/480	96/480	44/480	366/480	16/212
EMA/LW Ratio					0.359

Sire of Sire:

ND216/14 TW

Sire of Dam:

MD 338/15 Tw

Sire:

KD 36/18 Tw

Dam:

MD 605/17 0.2222

Dam of Sire:

KD 226/11

Dam of Dam:

MD 377/13 Tw 0.2311

Purchaser: _____ Price: _____

Lot 117

MERRYDOWNS SD 329/22 TW

EBV	864	2.63	4.92	0.03	20.4
	NZTW	WWTg-BV	LW8gBV	NLBgBV	EMA Actual
RANK	221/480	160/480	137/480	384/480	58/212
EMA/LW Ratio					0.349

Sire of Sire:

KD 36/18 TW

Sire of Dam:

WD 808/17 Tw

Sire:

MD 702/20 Tw

Dam:

MD 1058/20 Tw 0.2

Dam of Sire:

MD 357/17 0.12

Dam of Dam:

MD 494/17 0.1212

Purchaser: _____ Price: _____

Lot 118

MERRYDOWNS SD 67/22 TW

EBV	1133	2.52	4.56	-0.01	21
	NZTW	WWTg-BV	LW8gBV	NLBgBV	EMA Actual
RANK	65/480	181/480	162/480	447/480	38/212
EMA/LW Ratio					0.362

Sire of Sire:

CD 462/16 TW

Sire of Dam:

WLH 231/16 Tw

Sire:

TRD 9/9 Tr

Dam:

MD 69/18 Tw 0.122

Dam of Sire:

TRD 125/15 ..2310

Dam of Dam:

MD 264/16 Tw 0.3

Purchaser: _____ Price: _____

Lot 119

MERRYDOWNS SD 31/22 TW

EBV	684	2.2	3.71	0.07	18.5
	NZTW	WWTg-BV	LW8gBV	NLBgBV	EMA Actual
RANK	341/480	269/480	271/480	281/480	129/212
EMA/LW Ratio					0.350

Sire of Sire:

KD 36/18 TW

Sire of Dam:

WD 808/17 Tw

Sire:

MD 702/20 Tw

Dam:

MD 225/20 Tw 0.2

Dam of Sire:

MD 357/17 0.12

Dam of Dam:

MD 655/15 0.22232

Purchaser: _____ Price: _____

Lot 120

MERRYDOWNS SD 58/22 TW

EBV	646	2.04	4.17	0.02	20.5
	NZTW	WWTg-BV	LW8gBV	NLBgBV	EMA Actual
RANK	369/480	296/480	211/480	401/480	54/212
EMA/LW Ratio					0.372

Sire of Sire:

KD 36/18 TW

Sire of Dam:

WD 808/17 Tw

Sire:

MD 702/20 Tw

Dam:

MD 695/20 Tw 0.2

Dam of Sire:

MD 357/17 0.12

Dam of Dam:

MD 79/18 0.12

Purchaser: _____ Price: _____

Lot 121

MERRYDOWNS SD 10/22 TW

EBV	713	1.89	3.39	0.15	18.6
	NZTW	WWTg-BV	LW8gBV	NLBgBV	EMA Actual
RANK	325/480	333/480	307/480	61/480	125/212
EMA/LW Ratio					0.365

Sire of Sire:

MD 450/18 TW

Sire of Dam:

MD 176/16 Tw

Sire:

MD 457/20 Tr

Dam:

MD 215/20 Tr 0.2

Dam of Sire:

MD 752/16 Tw 0.32332

Dam of Dam:

MD 217/16 Tw 0.212

Purchaser: _____ Price: _____

Lot 122

MERRYDOWNS SD 455/22

EBV	874	2.37	4.5	-0.03	20.4
	NZTW	WWTg-BV	LW8gBV	NLBgBV	EMA Actual
RANK	216/480	223/480	166/480	473/480	58/212
EMA/LW Ratio					0.335

Sire of Sire:
KD 36/18 Tw

Sire of Dam:
MD 4/15 Tw

Sire:
MD 385/20 Tr

Dam:
MD 538/17 Tw 0.2221

Dam of Sire:
MD 659/16 0.1131

Dam of Dam:
MD 661/14 Tw 0.121122

Purchaser: _____ Price: _____

Lot 123

MERRYDOWNS SD 439/22 TW

EBV	724	1.54	1.53	0.04	18
	NZTW	WWTg-BV	LW8gBV	NLBgBV	EMA Actual
RANK	316/480	389/480	445/480	351/480	150/212
EMA/LW Ratio					0.360

Sire of Sire:
CD 462/16 TW

Sire of Dam:
WD 760/17 Tw

Sire:
TRD 9/19 Tr

Dam:
MD 423/19 Tw 0.22

Dam of Sire:
TRD 125/15 ..2310

Dam of Dam:
MD 16/17 Tw 0.122

Purchaser: _____ Price: _____



Lot 124

MERRYDOWNS 2372/22 TW

EBV	2283	2.2	3.55	0.26
	MW+M+W	WWTgBV	LW8gBV	NLBgBV
RANK	59/643	236/643	414/643	84/643
NZWTA Wool Testing Results	Wool Actual (Kgs)	MFD	CofV	Curv
	3.7	39.6	56.4	18.3

Sire of Sire:

MD 1585/18 Tw

Sire:

MV 103/20 Tw

Dam of Sire:

WD 178/17 Tw 0.2232

Sire of Dam:

MD 1465/16

Dam:

MD 1605/18 Tw 0.222

Dam of Dam:

MD 1144/14 Tr 0.2222

Purchaser: _____ Price: _____

Lot 125

MERRYDOWNS 2016/22 TR

EBV	2426	2.85	5.1	0.2
	MW+M+W	WWTgBV	LW8gBV	NLBgBV
RANK	31/643	106/643	184/643	263/643

NZWTA Wool Testing Results	Wool Actual (Kgs)	MFD	CofV	Curv
	3.8	40.5	51.9	19.7

Sire of Sire:

WIM 1166/15

Sire of Dam:

MD 902/16 Tw

Sire:

MD 1529/19 Tw

Dam:

MD 1619/18 Tw 0.223

Dam of Sire:

MD 1351/17 Tw 0.22

Dam of Dam:

MD 1379/15 0.22

Purchaser: _____ Price: _____

Lot 126

MERRYDOWNS 2725/22 TW

EBV	2381	2.61	5.52	0.19
	MW+M+W	WWTgBV	LW8gBV	NLBgBV
RANK	41/643	138/643	133/643	277/643

NZWTA Wool Testing Results	Wool Actual (Kgs)	MFD	CofV	Curv
	4.2	40	53.1	21.9

Sire of Sire:

MD 1624/17 Tr

Sire of Dam:

WIM 1166/15

Sire:

MD 1888/19 Tw

Dam:

MD 1769/18 0.212

Dam of Sire:

MD 951/16 Tw 0.222

Dam of Dam:

MD 1765/16 Tw 0.1

Purchaser: _____ Price: _____

Lot 127	MERRYDOWNS 1632/22 TW			
----------------	-----------------------	--	--	--

EBV	1907	3.13	7.47	0.29
	MW+M+W	WWTgBV	LW8gBV	NLBgBV
RANK	146/643	74/643	28/643	24/643

NZWTA Wool Testing Results	Wool Actual (Kgs)	MFD	CofV	Curv
	4.4	40.7	78.2	16.1

Sire of Sire:
MA 94/16 Tw

Sire:
MA 110/19 Tw

Dam of Sire:
MA 479/14 Tw 0.12122

Purchaser: _____ Price: _____

Sire of Dam:
WIM 1166/15

Dam:
MD 2302/20 Tw 0.2

Dam of Dam:
MD 1504/18 Tw 0.2

Lot 128	MERRYDOWNS 2756/22 TR			
----------------	-----------------------	--	--	--

EBV	1996	2.54	5.21	0.24
	MW+M+W	WWTgBV	LW8gBV	NLBgBV
RANK	120/643	147/643	165/643	138/643

NZWTA Wool Testing Results	Wool Actual (Kgs)	MFD	CofV	Curv
	4.2	40.7	50.9	18.6

Sire of Sire:
MD 902/16 Tw

Sire:
MD 1585/18 Tw

Dam of Sire:
MD 1147/16 Tw 0.2

Purchaser: _____ Price: _____

Sire of Dam:
WIM 1166/15

Dam:
MD 1264/18 Tw 0.223

Dam of Dam:
MD 1867/16 Tw 0.213

Lot 129

MERRYVALE 25/22 TW

EBV	1113	2.36	6.59	0.23
	MW+M+W	WWTgBV	LW8gBV	NLBgBV
RANK	63/109	28/109	10/109	17/109

NZWTA Wool Testing Results	Wool Actual (Kgs)	MFD	CofV	Curv
	3.8	38.8	53.6	18.1

Sire of Sire:

MD 802/14 Tw

Sire:

EB 60/19 Tw

Dam of Sire:

EB 110/15 Tw 0.222322

Purchaser: _____ Price: _____

Sire of Dam:

MD 1292/14 Tw

Dam:

MV 130/20 Tw 0.2

Dam of Dam:

MV 100/18 Tw 0.22

Lot 130

MERRYDOWNS 2379/22 TW

EBV	2034	1.88	3.46	0.23
	MW+M+W	WWTgBV	LW8gBV	NLBgBV
RANK	112/643	335/643	423/643	158/643

NZWTA Wool Testing Results	Wool Actual (Kgs)	MFD	CofV	Curv
	3.9	42.5	58.4	19

Sire of Sire:

MD 1585/18 Tw

Sire:

MD 2434/20 Tr

Dam of Sire:

MD 1871/17 0.1333

Purchaser: _____ Price: _____

Sire of Dam:

MD 1537/15 Tw

Dam:

MD 1890/18 Tr 0.222

Dam of Dam:

MD 920/16 0.322

Lot 131	MERRYDOWNS 2216/22 TW			
----------------	-----------------------	--	--	--

EBV	1650	1.93	3.88	0.2
	MW+M+W	WWTgBV	LW8gBV	NLBgBV
RANK	238/643	321/643	372/643	260/643

NZWTA Wool Testing Results	Wool Actual (Kgs)	MFD	CofV	Curv
	3.9	40.5	56.7	18.3

Sire of Sire:
RK 338/17 Tw

Sire:
RK 7/19

Dam of Sire:
RK 138/11 Tw 0.122223122

Purchaser: _____ Price: _____

Sire of Dam:
MD 954/16 Tw

Dam:
MD 1872/19 Tw 0.22

Dam of Dam:
MD 1856/14 Tw 0.22322

Lot 132	MERRYDOWNS 1953/22 TW			
----------------	-----------------------	--	--	--

EBV	2039	2.27	4.23	0.16
	MW+M+W	WWTgBV	LW8gBV	NLBgBV
RANK	110/643	219/643	306/643	390/643

NZWTA Wool Testing Results	Wool Actual (Kgs)	MFD	CofV	Curv
	3.9	39	51.7	20.4

Sire of Sire:
MD 902/16 Tw

Sire:
MD 1585/18 Tw

Dam of Sire:
MD 1147/16 Tw 0.2

Purchaser: _____ Price: _____

Sire of Dam:
WIM 1166/15

Dam:
MD 1128/19 Tw 0.22

Dam of Dam:
MD 1994/15 Tw 0.2122

Lot 133

MERRYDOWNS 1631/22 TW

EBV	1979	3.13	7.01	0.29
	MW+M+W	WWTgBV	LW8gBV	NLBgBV
RANK	128/643	73/643	42/643	24/643

NZWTA Wool Testing Results	Wool Actual (Kgs)	MFD	CofV	Curv
	3.7	39.2	87.3	18.6

Sire of Sire:

MA 94/16 Tw

Sire of Dam:

WIM 1166/15

Sire:

MA 110/19 Tw

Dam:

MD 2302/20 Tw 0.2

Dam of Sire:

MA 479/14 Tw 0.12122

Dam of Dam:

MD 1504/18 Tw 0.2

Purchaser: _____ Price: _____

Lot 134

MERRYDOWNS 2747/22 TW

EBV	1708	2.94	5.32	0.21
	MW+M+W	WWTgBV	LW8gBV	NLBgBV
RANK	221/643	91/643	153/643	228/643

NZWTA Wool Testing Results	Wool Actual (Kgs)	MFD	CofV	Curv
	4.1	36	67.3	16.3

Sire of Sire:

MD 1043/16 Tw

Sire of Dam:

MD 954/16 Tw

Sire:

MV 75/20 Tr

Dam:

MD 1740/18 Tw 0.212

Dam of Sire:

WD 62/17 Tw 0.231

Dam of Dam:

MD 1949/13 Tw 0.2232

Purchaser: _____ Price: _____

Lot 135		MERRYDOWNS 1783/22 TW		
EBV	2217	2.09	4.6	0.27
	MW+M+W	WWTgBV	LW8gBV	NLBgBV
RANK	71/643	272/643	247/643	62/643
NZWTA Wool Testing Results	Wool Actual (Kgs)	MFD	CofV	Curv
	4.7	43.6	43.1	21.7

Sire of Sire:

MD 1624/17 Tr

Sire:

MD 1888/19 Tw

Dam of Sire:

MD 951/16 Tw 0.222

Purchaser: _____ Price: _____

Sire of Dam:

MD 902/16 Tw

Dam:

MD 1624/19 Tw 0.22

Dam of Dam:

MD 1899/17 Tw 0.2

Lot 136		MERRYDOWNS 1263/22 TW		
EBV	1600	2.33	3.89	0.27
	MW+M+W	WWTgBV	LW8gBV	NLBgBV
RANK	268/643	201/643	370/643	67/643
NZWTA Wool Testing Results	Wool Actual (Kgs)	MFD	CofV	Curv
	4.5	43.2	55.8	17.7

Sire of Sire:

MA 94/16 Tw

Sire:

MA 110/19 Tw

Dam of Sire:

MA 479/14 Tw 0.12122

Purchaser: _____ Price: _____

Sire of Dam:

MD 1043/16 Tw

Dam:

MD 2174/20 Tw 0.2

Dam of Dam:

MD 1251/13 Tw 0.322222

Lot 137

MERRYDOWNS 1807/22 TW

EBV	1829	2.84	6.57	0.26
	MW+M+W	WWTgBV	LW8gBV	NLBgBV
RANK	173/643	109/643	65/643	82/643

NZWTA Wool Testing Results	Wool Actual (Kgs)	MFD	CofV	Curv
	3.9	41	45.6	20.7

Sire of Sire:

MD 1585/18 Tw

Sire of Dam:

MD 954/16 Tw

Sire:

MD 2434/20 Tr

Dam:

MD 2219/18 Tw 0.222

Dam of Sire:

MD 1871/17 0.1333

Dam of Dam:

MD 2172/15 Tw 0.22223

Purchaser: _____ Price: _____

Lot 138

MERRYDOWNS 2269/22 TW

EBV	2437	3.39	7.42	0.22
	MW+M+W	WWTgBV	LW8gBV	NLBgBV
RANK	27/643	48/643	31/643	199/643

NZWTA Wool Testing Results	Wool Actual (Kgs)	MFD	CofV	Curv
	4	40	70.1	18.5

Sire of Sire:

RK 338/17 Tw

Sire of Dam:

W 442/13 Tw

Sire:

RK 7/19

Dam:

MD 2370/18 Tw 0.222

Dam of Sire:

RK 138/11 Tw 0.122223122

Dam of Dam:

MD 1837/16 Tr 0.222

Purchaser: _____ Price: _____

Lot 139	MERRYDOWNS 2201/22 TW			
----------------	-----------------------	--	--	--

EBV	1542	3.23	6.43	0.21
	MW+M+W	WWTgBV	LW8gBV	NLBgBV
RANK	289/643	64/643	72/643	200/643

NZWTA Wool Testing Results	Wool Actual (Kgs)	MFD	CofV	Curv
	4.1	38.4	59.1	20.4

Sire of Sire:
MD 1043/16 Tw

Sire:
MV 75/20 Tr

Dam of Sire:
WD 62/17 Tw 0.231

Purchaser: _____ Price: _____

Sire of Dam:
MD 954/16 Tw

Dam:
MD 1216/18 Tw 0.222

Dam of Dam:
MD 1048/14 Tw 0.22222

Lot 140	MERRYDOWNS 1761/22 TW			
----------------	-----------------------	--	--	--

EBV	2603	3.17	6.29	0.23
	MW+M+W	WWTgBV	LW8gBV	NLBgBV
RANK	9/643	70/643	76/643	159/643

NZWTA Wool Testing Results	Wool Actual (Kgs)	MFD	CofV	Curv
	4.1	38.9	55.3	21.9

Sire of Sire:
MD 1624/17 Tr

Sire:
MD 1888/19 Tw

Dam of Sire:
MD 951/16 Tw 0.222

Purchaser: _____ Price: _____

Sire of Dam:
WIM 1166/15

Dam:
MD 1775/18 Tw 0.122

Dam of Dam:
MD 1920/16 0.2122

Lot 141

MERRYDOWNS 1848/22 TW

EBV	2212	4.27	6.79	0.19
	MW+M+W	WWTgBV	LW8gBV	NLBgBV
RANK	74/643	14/643	47/643	297/643

NZWTA Wool Testing Results	Wool Actual (Kgs)	MFD	CofV	Curv
	3.7	40.9	55	16.3

Sire of Sire:

WIM 1166/15

Sire of Dam:

MD 2273/15

Sire:

MD 1529/19 Tw

Dam:

MD 2240/18 Tw 0.222

Dam of Sire:

MD 1351/17 Tw 0.22

Dam of Dam:

MD 1251/13 Tw 0.322222

Purchaser: _____ Price: _____

Lot 142

MERRYDOWNS 2091/22 TW

EBV	2395	3.41	6.64	0.18
	MW+M+W	WWTgBV	LW8gBV	NLBgBV
RANK	34/643	47/643	58/643	314/643

NZWTA Wool Testing Results	Wool Actual (Kgs)	MFD	CofV	Curv
	3.6	42.4	55.8	19.1

Sire of Sire:

MD 902/16 Tw

Sire of Dam:

WIM 1166/15

Sire:

MD 1585/18 Tw

Dam:

MD 1248/19 0.22

Dam of Sire:

MD 1147/16 Tw 0.2

Dam of Dam:

MD 1514/17 Tw 0.1

Purchaser: _____ Price: _____

Lot 143	MERRYDOWNS 1799/22 TW			
----------------	-----------------------	--	--	--

EBV	1905	3.15	6.1	0.15
	MW+M+W	WWTgBV	LW8gBV	NLBgBV
RANK	148/643	72/643	91/643	440/643

NZWTA Wool Testing Results	Wool Actual (Kgs)	MFD	CofV	Curv
	4.8	38.4	54.4	20.5

Sire of Sire:
RK 338/17 Tw

Sire:
RK 7/19

Dam of Sire:
RK 138/11 Tw 0.122223122

Purchaser: _____ Price: _____

Sire of Dam:
MD 1043/16 Tw

Dam:
MD 1232/18 Tw 0.222

Dam of Dam:
MD 1137/11 Tw .222212..2

Lot 144	MERRYDOWNS 2060/22 TW			
----------------	-----------------------	--	--	--

EBV	2297	4.33	8.4	0.22
	MW+M+W	WWTgBV	LW8gBV	NLBgBV
RANK	56/643	12/643	14/643	191/643

NZWTA Wool Testing Results	Wool Actual (Kgs)	MFD	CofV	Curv
	4.5	40.3	54.1	19.3

Sire of Sire:
MD 1043/16 Tw

Sire:
MV 75/20 Tr

Dam of Sire:
WD 62/17 Tw 0.231

Purchaser: _____ Price: _____

Sire of Dam:
WIM 1166/15

Dam:
MD 2042/19 Tw 0.22

Dam of Dam:
MD 1680/17 0.2222

Lot 145

MERRYDOWNS 2766/22 TW

EBV	1799	3.05	6.19	0.22
	MW+M+W	WWTgBV	LW8gBV	NLBgBV
RANK	183/643	81/643	83/643	197/643

NZWTA Wool Testing Results	Wool Actual (Kgs)	MFD	CofV	Curv
	4.1	44	51.6	16.3

Sire of Sire:

MD 1043/16 Tw

Sire:

MV 75/20 Tr

Dam of Sire:

WD 62/17 Tw 0.231

Purchaser: _____ Price: _____

Sire of Dam:

MD 802/14 Tw

Dam:

MD 1590/18 Tw 0.222

Dam of Dam:

MD 960/16 Tw 0.2

Lot 146

MERRYDOWNS 2084/22 TW

EBV	2506	2.5	6.11	0.24
	MW+M+W	WWTgBV	LW8gBV	NLBgBV
RANK	16/643	159/643	89/643	114/643

NZWTA Wool Testing Results	Wool Actual (Kgs)	MFD	CofV	Curv
	3.9	41.5	68.7	16.3

Sire of Sire:

MD 1624/17 Tr

Sire:

MD 1888/19 Tw

Dam of Sire:

MD 951/16 Tw 0.222

Purchaser: _____ Price: _____

Sire of Dam:

FAR 40/16 Tw

Dam:

MD 2383/18 Tw 0.122

Dam of Dam:

MD 1820/11 Tw 0.123222

Lot 147		MERRYDOWNS 2752/22 TW		
EBV	2096	2.35	5.05	0.19
	MW+M+W	WWTgBV	LW8gBV	NLBgBV
RANK	97/643	190/643	188/643	295/643
NZWTA Wool Testing Results	Wool Actual (Kgs)	MFD	CofV	Curv
	3.7	39.1	59.6	15.6

Sire of Sire:

MD 902/16 Tw

Sire:

MD 1585/18 Tw

Dam of Sire:

MD 1147/16 Tw 0.2

Purchaser: _____ Price: _____

Sire of Dam:

WIM 1166/15

Dam:

MD 1202/19 Tw 0.22

Dam of Dam:

MD 2323/17 Tw 0.212

Lot 148		MERRYDOWNS 1363/22 TW		
EBV	1392	2.79	7.76	0.24
	MW+M+W	WWTgBV	LW8gBV	NLBgBV
RANK	351/643	114/643	22/643	133/643
NZWTA Wool Testing Results	Wool Actual (Kgs)	MFD	CofV	Curv
	3.6	40.7	48.3	15.1

Sire of Sire:

MD 802/14 Tw

Sire:

EB 60/19 Tw

Dam of Sire:

EB 110/15 Tw 0.222322

Purchaser: _____ Price: _____

Sire of Dam:

MD 1465/16

Dam:

MD 1412/20 Tw 0.2

Dam of Dam:

MD 1723/18 Tw 0.2

Lot 149

MERRYDOWNS 2806/22 TW

EBV	2252	4.6	8.81	0.17
	MW+M+W	WWTgBV	LW8gBV	NLBgBV
RANK	63/643	9/643	6/643	383/643

NZWTA Wool Testing Results	Wool Actual (Kgs)	MFD	CofV	Curv
	3.4	40.8	50.2	16.7

Sire of Sire:
MD 1043/16 Tw

Sire:
MV 75/20 Tr

Dam of Sire:
WD 62/17 Tw 0.231

Purchaser: _____ Price: _____

Sire of Dam:
WIM 1166/15

Dam:
MD 1033/18 Tw 0.222

Dam of Dam:
MD 1446/16 0.222

Lot 150

MERRYDOWNS 1936/22 TW

EBV	1746	4.27	7.92	0.18
	MW+M+W	WWTgBV	LW8gBV	NLBgBV
RANK	207/643	15/643	17/643	316/643

NZWTA Wool Testing Results	Wool Actual (Kgs)	MFD	CofV	Curv
	3.5	40.2	52.3	18.8

Sire of Sire:
MD 1043/16 Tw

Sire:
MV 75/20 Tr

Dam of Sire:
WD 62/17 Tw 0.231

Purchaser: _____ Price: _____

Sire of Dam:
MD 1465/16

Dam:
MD 2119/18 Tw 0.222

Dam of Dam:
MD 1817/14 Tw 0.2221

Lot 151	MERRYDOWNS 2818/22 TW			
----------------	-----------------------	--	--	--

EBV	2216	4.29	6.5	0.22
	MW+M+W	WWTgBV	LW8gBV	NLBgBV
RANK	72/643	13/643	67/643	169/643

NZWTA Wool Testing Results	Wool Actual (Kgs)	MFD	CofV	Curv
	4.1	37.2	44.4	20.8

Sire of Sire:

MD 1043/16 Tw

Sire:

MV 75/20 Tr

Dam of Sire:

WD 62/17 Tw 0.231

Purchaser: _____ Price: _____

Sire of Dam:

MD 2273/15

Dam:

MD 1205/19 Tw 0.22

Dam of Dam:

MD 1114/17 Tw 0.2323

Lot 152	MERRYDOWNS 2768/22 TW			
----------------	-----------------------	--	--	--

EBV	2335	4.1	7.44	0.2
	MW+M+W	WWTgBV	LW8gBV	NLBgBV
RANK	48/643	19/643	29/643	256/643

NZWTA Wool Testing Results	Wool Actual (Kgs)	MFD	CofV	Curv
	4.3	39.2	55.9	16.4

Sire of Sire:

MD 1043/16 Tw

Sire:

MV 75/20 Tr

Dam of Sire:

WD 62/17 Tw 0.231

Purchaser: _____ Price: _____

Sire of Dam:

WIM 1166/15

Dam:

MD 1865/18 Tw 0.222

Dam of Dam:

MD 2299/15 Tw 0.12222

Lot 153**MERRYDOWNS 2156/22 TW**

EBV	2081	4.21	8.57	0.18
	MW+M+W	WWTgBV	LW8gBV	NLBgBV
RANK	100/643	16/643	12/643	331/643
NZWTA Wool Testing Results	Wool Actual (Kgs)	MFD	CofV	Curv
	3.8	39	54.8	15.5

Sire of Sire:
MD 1043/16 Tw**Sire:**
MV 75/20 Tr**Dam of Sire:**
WD 62/17 Tw 0.231**Purchaser:** _____ **Price:** _____**Sire of Dam:**
WIM 1166/15**Dam:**
MD 1883/19 Tw 0.12**Dam of Dam:**
MD 1480/17 Tw 0.2222Taking agribusiness to
the next level

At AgriFocus we are specialist farm accountants and are committed to helping our clients achieve their financial and business goals.

Our team have a rural background and understand the demands of a farm business. By treating each client as an individual, we can better understand their business and can work together to:

- Improve profit and cashflow
- Create wealth
- Minimise taxation
- Put you in control of your business

We offer:

- A full range of accounting services
- Large number of on-farm meetings
- Farm succession planning
- Experts at assisting with the start-up of new farming businesses

Contact Brett or our Invercargill or Gore offices today.

Brett McDonough B. Com. Ag. (VFM)
0276 815 162
Brett@agrifocus.co.nz

(03) 2142234
admin@agrifocus.co.nz

Lot 154

MERRYDOWNS SD 1030/22 TW

EBV	1438	4.1	8.52	0.13	21.9
	NZTW	WWTg-BV	LW8gBV	NLBgBV	EMA Actual
RANK	7/480	10/480	2/480	97/480	25/212
EMA/LW Ratio					0.368

Sire of Sire:
HF K7/16 TW

Sire of Dam:
KD 36/18 Tw

Sire:
MD 1100/19 Tw

Dam:
MD 562/20 Tw 0.2

Dam of Sire:
MD 80/16 0.22

Dam of Dam:
MD 444/17 0.1223

Purchaser: _____ Price: _____

Lot 155

MERRYDOWNS SD 204/22 TW

EBV	1144	2.55	4.64	-0.03	19.6
	NZTW	WWTg-BV	LW8gBV	NLBgBV	EMA Actual
RANK	57/480	172/480	156/480	471/480	85/212
EMA/LW Ratio					0.366

Sire of Sire:
CD 462/16 TW

Sire of Dam:
WLH 231/16 Tw

Sire:
TRD 9/19 Tr

Dam:
MD 201/18 Tw 0.122

Dam of Sire:
TRD 125/15 ..2310

Dam of Dam:
MD 288/16 Tw 0.22221

Purchaser: _____ Price: _____

Lot 156

MERRYDOWNS SD 341/22 TW

EBV	756	2.35	3.9	-0.02	18.1
	NZTW	WWTg-BV	LW8gBV	NLBgBV	EMA Actual
RANK	289/480	229/480	245/480	462/480	145/212
EMA/LW Ratio					0.315

Sire of Sire:
KD 36/18 TW

Sire of Dam:
MAC 14/13 Tw

Sire:
MD 702/20 Tw

Dam:
MD 284/15 Tw 0.122212

Dam of Sire:
MD 357/17 0.12

Dam of Dam:
MD 675/13 Tw 0.331222

Purchaser: _____ Price: _____

Lot 157

MERRYDOWNS SD 169/22

EBV	1176	3.17	6.28	-0.04	24.9
	NZTW	WWTg-BV	LW8gBV	NLBgBV	EMA Actual
RANK	49/480	67/480	34/480	476/480	3/212
EMA/LW Ratio					0.422

Sire of Sire:
KD 36/18 Tw

Sire of Dam:
MD 276/15 Tw

Sire:
MD 702/20 Tw

Dam:
MD 614/17 Tw 0.1121

Dam of Sire:
MD 357/17 0.12

Dam of Dam:
MD 780/13 Tw 0.2123

Purchaser: _____ Price: _____

Lot 158

MERRYDOWNS SD 458/22

EBV	676	2.06	3.83	0.01	17
	NZTW	WWTg-BV	LW8gBV	NLBgBV	EMA Actual
RANK	347/480	295/480	255/480	407/480	182/212
EMA/LW Ratio					0.295

Sire of Sire:

KD 36/18 Tw

Sire of Dam:

MD 450/18 Tw

Sire:

MD 1095/20 Tw

Dam:

MD 238/20 Tw 0.1

Dam of Sire:

MD 438/18 0.21

Dam of Dam:

MD 331/17 Tw 0.221

Purchaser: _____ Price: _____

Lot 159

MERRYDOWNS SD 281/22

EBV	938	2.98	6.93	0.04	17.1
	NZTW	WWTg-BV	LW8gBV	NLBgBV	EMA Actual
RANK	172/480	94/480	16/480	338/480	180/212
EMA/LW Ratio					0.285

Sire of Sire:

KD 36/18 Tw

Sire of Dam:

MTA 22/15

Sire:

MD 1095/20 Tw

Dam:

MD 635/17 Tw 0.2131

Dam of Sire:

MD 438/18 0.21

Dam of Dam:

MD 690/12 0.11122

Purchaser: _____ Price: _____

Lot 160

MERRYDOWNS SD 993/22 TW

EBV	701	2.2	4.9	0.07	19
	NZTW	WWTg-BV	LW8gBV	NLBgBV	EMA Actual
RANK	332/480	271/480	139/480	244/480	117/212
EMA/LW Ratio					0.342

Sire of Sire:

KD 36/18 TW

Sire of Dam:

WD 808/17 Tw

Sire:

MD 702/20 Tw

Dam:

MD 1107/20 Tw 0.2

Dam of Sire:

MD 357/17 0.12

Dam of Dam:

MD 607/17 0.1223

Purchaser: _____ Price: _____

Lot 161

MERRYDOWNS SD 59/22

EBV	910	3.1	5.47	-0.01	19.4
	NZTW	WWTg-BV	LW8gBV	NLBgBV	EMA Actual
RANK	189/480	79/480	88/480	445/480	91/212
EMA/LW Ratio					0.320

Sire of Sire:

KD 36/18 Tw

Sire of Dam:

MD 450/18 Tw

Sire:

MD 702/20 Tw

Dam:

MD 97/20 Tw 0.1

Dam of Sire:

MD 357/17 0.12

Dam of Dam:

MD 253/17 Tw 0.22

Purchaser: _____ Price: _____

Lot 162

MERRYDOWNS SD 976/22 TW

EBV	1217	2.56	4.28	0.06	21.6
	NZTW	WWTg-BV	LW8gBV	NLBgBV	EMA Actual
RANK	30/480	171/480	189/480	303/480	31/212
EMA/LW Ratio					0.403

Sire of Sire:

CD 462/16 TW

Sire of Dam:

MD 176/16 Tw

Sire:

TRD 9/19 Tr

Dam:

MD 720/18 Tw 0.222

Dam of Sire:

TRD 125/15 ..2310

Dam of Dam:

MD 538/14 Tw 0.21122

Purchaser: _____ Price: _____

Lot 163

MERRYDOWNS SD 88/22 TR

EBV	1122	3.73	6.25	0.13	19.9
	NZTW	WWTg-BV	LW8gBV	NLBgBV	EMA Actual
RANK	69/480	21/480	37/480	111/480	72/212
EMA/LW Ratio					0.343

Sire of Sire:

WD 760/17 Tw

Sire of Dam:

KD 36/18 Tw

Sire:

MD 67/19 Tw

Dam:

MD 560/20 Tw 0.3

Dam of Sire:

MD 830/17 Tw 0.2212

Dam of Dam:

MD 513/18 0.333

Purchaser: _____ Price: _____

Lot 164

MERRYDOWNS SD 154/22 TR

EBV	1341	2.87	5.94	0.09	20.4
	NZTW	WWTg-BV	LW8gBV	NLBgBV	EMA Actual
RANK	12/480	111/480	58/480	208/480	58/212
EMA/LW Ratio					0.355

Sire of Sire:

CD 462/16 Tw

Sire of Dam:

MD 618/16 Tw

Sire:

TRD 9/19 Tr

Dam:

MD 697/18 Tw 0.123

Dam of Sire:

TRD 125/15 ..2310

Dam of Dam:

MD 2/13 Tw 0.22211

Purchaser: _____ Price: _____

Lot 165

MERRYDOWNS SD 763/22 TW

EBV	673	2.19	4.49	0.12	17.4
	NZTW	WWTg-BV	LW8gBV	NLBgBV	EMA Actual
RANK	351/480	274/480	170/480	125/480	168/212
EMA/LW Ratio					0.311

Sire of Sire:

ND216/14

Sire of Dam:

MD 4/15 Tw

Sire:

KD 36/18 Tw

Dam:

MD 912/17 0.2222

Dam of Sire:

KD 226/11

Dam of Dam:

MD 180/14 Tw 0.222

Purchaser: _____ Price: _____

Lot 166

MERRYDOWNS SD 962/22 TW

EBV	955	3.06	5.85	0.04	16.9
	NZTW	WWTg-BV	LW8gBV	NLBgBV	EMA Actual
RANK	161/480	89/480	62/480	361/480	184/212
EMA/LW Ratio					0.296

Sire of Sire:

KD 36/18 TW

Sire of Dam:

MD 858/17 Tw

Sire:

MD 1095/20 Tw

Dam:

MD 704/20 Tw 0.2

Dam of Sire:

MD 438/18 0.21

Dam of Dam:

MD 785/17 0.2221

Purchaser: _____ Price: _____

Lot 167

MERRYDOWNS SD 132/22

EBV	866	1.97	4.2	0.01	23.6
	NZTW	WWTg-BV	LW8gBV	NLBgBV	EMA Actual
RANK	220/480	315/480	209/480	418/480	9/212
EMA/LW Ratio					0.391

Sire of Sire:

MD 176/16 Tw

Sire of Dam:

WD 808/17 Tw

Sire:

MD 643/19 Tw

Dam:

MD 326/19 0.11

Dam of Sire:

MD 778/16 Tw 0.12

Dam of Dam:

MD 458/17 0.12

Purchaser: _____ Price: _____

Lot 168

MERRYDOWNS SD 345/22 TW

EBV	870	2.91	5.21	0.11	19.1
	NZTW	WWTg-BV	LW8gBV	NLBgBV	EMA Actual
RANK	219/480	105/480	105/480	155/480	109/212
EMA/LW Ratio					0.356

Sire of Sire:

MD 450/18 TW

Sire of Dam:

MD 858/17 Tw

Sire:

MD 457/20 Tr

Dam:

MD 903/19 Tr 0.12

Dam of Sire:

MD 752/16 Tw 0.32332

Dam of Dam:

MD 127/15 0.223

Purchaser: _____ Price: _____

Lot 169

MERRYDOWNS SD 587/22 TW

EBV	1049	2.93	4.5	0.16	21.8
	NZTW	WWTg-BV	LW8gBV	NLBgBV	EMA Actual
RANK	113/480	100/480	167/480	49/480	26/212
EMA/LW Ratio					0.373

Sire of Sire:

MD 450/18 TW

Sire of Dam:

MD 176/16 Tw

Sire:

MD 457/20 Tr

Dam:

MD 471/19 Tr 0.22

Dam of Sire:

MD 752/16 Tw 0.32332

Dam of Dam:

MD 51/13 Tw 0.122222

Purchaser: _____ Price: _____

Lot 170

MERRYDOWNS SD 723/22 TW

EBV	808	2.58	5.48	0.06	18
	NZTW	WWTg-BV	LW8gBV	NLBgBV	EMA Actual
RANK	261/480	166/480	85/480	300/480	150/212
EMA/LW Ratio					0.324

Sire of Sire:

KD 36/18 TW

Sire of Dam:

MD 858/17 Tw

Sire:

MD 1095/20 Tw

Dam:

MD 857/19 Tw 0.22

Dam of Sire:

MD 438/18 0.21

Dam of Dam:

MD 391/16 0.222

Purchaser: _____ Price: _____

Lot 171

MERRYDOWNS SD 875/22 TR

EBV	968	3.24	5	0.16	21.6
	NZTW	WWTg-BV	LW8gBV	NLBgBV	EMA Actual
RANK	156/480	63/480	126/480	40/480	31/212
EMA/LW Ratio					0.396

Sire of Sire:

MD 450/18 Tw

Sire of Dam:

MD 858/17 Tw

Sire:

MD 457/20 Tr

Dam:

MD 293/19 Tr 0.23

Dam of Sire:

MD 752/16 Tw 0.32332

Dam of Dam:

MD 120/14 0.222232

Purchaser: _____ Price: _____

Lot 172

MERRYDOWNS SD 317/22 TW

EBV	1196	2.65	4.25	0.04	22.5
	NZTW	WWTg-BV	LW8gBV	NLBgBV	EMA Actual
RANK	39/480	156/480	198/480	339/480	18/212
EMA/LW Ratio					0.397

Sire of Sire:

CD 462/16 TW

Sire of Dam:

WLH 70/16 Tw

Sire:

TRD 9/19 Tr

Dam:

MD 684/18 Tw 0.222

Dam of Sire:

TRD 125/15 ..2310

Dam of Dam:

MD 446/16 Tw 0.3

Purchaser: _____ Price: _____

Lot 173

MERRYDOWNS SD 715/22 TW

EBV	841	1.62	2.9	0.07	18.1
	NZTW	WWTg-BV	LW8gBV	NLBgBV	EMA Actual
RANK	236/480	375/480	355/480	258/480	145/212
EMA/LW Ratio					0.356

Sire of Sire:

CD 462/16 TW

Sire of Dam:

MD 176/16 Tw

Sire:

TRD 9/19 Tr

Dam:

MD 808/18 Tw 0.222

Dam of Sire:

TRD 125/15 ..2310

Dam of Dam:

MD 400/15 Tw 0.2222

Purchaser: _____ Price: _____

Lot 174

MERRYDOWNS SD 1121/22 TR

EBV	885	2.18	4.26	0.23	18.1
	NZTW	WWTg-BV	LW8gBV	NLBgBV	EMA Actual
RANK	210/480	277/480	194/480	6/480	145/212
EMA/LW Ratio					0.352

Sire of Sire:

MD 450/18 Tw

Sire of Dam:

HF K7/16 Tw

Sire:

MD 457/20 Tr

Dam:

MD 657/19 Tr 0.23

Dam of Sire:

MD 752/16 Tw 0.32332

Dam of Dam:

MD 406/16 0.33222

Purchaser: _____ Price: _____

Lot 175

MERRYDOWNS SD 1173/22

EBV	1039	2.79	4.23	0.07	19.9
	NZTW	WWTg-BV	LW8gBV	NLBgBV	EMA Actual
RANK	119/480	128/480	202/480	261/480	72/212
EMA/LW Ratio					0.390

Sire of Sire:

WD 760/17 Tw

Sire of Dam:

MD 395/18 Tw

Sire:

MD 67/19 Tw

Dam:

MD 399/20 Tw 0.1

Dam of Sire:

MD 830/17 Tw 0.2212

Dam of Dam:

MD 403/14 Tr 0.2322221

Purchaser: _____ Price: _____

Lot 176

MERRYDOWNS SD 150/22

EBV	652	1.92	3.53	0.02	20.2
	NZTW	WWTg-BV	LW8gBV	NLBgBV	EMA Actual
RANK	367/480	324/480	291/480	387/480	66/212
EMA/LW Ratio					0.354

Sire of Sire:

KD 36/18 Tw

Sire of Dam:

WD 760/17 Tw

Sire:

MD 1095/20 Tw

Dam:

MD 749/20 Tw 0.1

Dam of Sire:

MD 438/18 0.21

Dam of Dam:

MD 927/17 Tw 0.2322

Purchaser: _____ Price: _____

Lot 177

MERRYDOWNS SD 548/22 TW

EBV	1207	2.73	4.75	0.11	19.3
	NZTW	WWTg-BV	LW8gBV	NLBgBV	EMA Actual
RANK	34/480	136/480	151/480	141/480	95/212
EMA/LW Ratio					0.358

Sire of Sire:

CD 462/16 TW

Sire of Dam:

MD 176/16 Tw

Sire:

TRD 9/19 Tr

Dam:

MD 333/18 Tw 0.232

Dam of Sire:

TRD 125/15 ..2310

Dam of Dam:

MD 428/12 Tw 0.21222

Purchaser: _____ Price: _____

Lot 178

MERRYDOWNS SD 615/22 TW

EBV	979	2.82	4.52	0.04	19.9
	NZTW	WWTg-BV	LW8gBV	NLBgBV	EMA Actual
RANK	150/480	121/480	165/480	357/480	72/212
EMA/LW Ratio					0.359

Sire of Sire:

KD 36/18 TW

Sire of Dam:

WLH 70/16 Tw

Sire:

MD 1095/20 Tw

Dam:

MD 123/18 Tw 0.212

Dam of Sire:

MD 438/18 0.21

Dam of Dam:

MD 580/16 Tw 0.12

Purchaser: _____ Price: _____

Lot 179

MERRYDOWNS SD 601/22 TW

EBV	1675	5.37	8.33	0.09	18
	NZTW	WWTg-BV	LW8gBV	NLBgBV	EMA Actual
RANK	1/480	1/480	3/480	221/480	150/212
EMA/LW Ratio					0.324

Sire of Sire:

HF K7/16 TW

Sire of Dam:

WLH 70/16 Tw

Sire:

MD 1100/19 Tw

Dam:

MD 93/18 Tw 0.212

Dam of Sire:

MD 80/16 0.22

Dam of Dam:

MD 310/16 Tw 0.223

Purchaser: _____ Price: _____

Lot 180

MERRYDOWNS SD 944/22

EBV	640	2.2	2.82	-0.04	19.6
	NZTW	WWTg-BV	LW8gBV	NLBgBV	EMA Actual
RANK	372/480	270/480	362/480	479/480	85/212
EMA/LW Ratio					0.349

Sire of Sire:

WD 760/17 Tw

Sire of Dam:

KD 36/18 Tw

Sire:

MD 67/19 Tw

Dam:

MD 887/20 Tw 0.1

Dam of Sire:

MD 830/17 Tw 0.2212

Dam of Dam:

MD 36/16 0.21221

Purchaser: _____ Price: _____

Lot 181

MERRYDOWNS SD 35/22 TW

EBV	669	2.24	3.29	0.01	20.8
	NZTW	WWTg-BV	LW8gBV	NLBgBV	EMA Actual
RANK	354/480	255/480	316/480	411/480	47/212
EMA/LW Ratio					0.395

Sire of Sire:

WD 760/17 TW

Sire of Dam:

KD 36/18 Tw

Sire:

MD 67/19 Tw

Dam:

MD 699/20 Tw 0.2

Dam of Sire:

MD 830/17 Tw 0.2212

Dam of Dam:

MD 539/18 0.2

Purchaser: _____ Price: _____

Lot 182

MERRYDOWNS SD 777/22 TW

EBV	743	2.03	2.86	0.13	17.4
	NZTW	WWTg-BV	LW8gBV	NLBgBV	EMA Actual
RANK	299/480	298/480	357/480	93/480	168/212
EMA/LW Ratio					0.311

Sire of Sire:

MD 450/18 TW

Sire of Dam:

MD 618/16 Tw

Sire:

MD 457/20 Tr

Dam:

MD 318/19 Tr 0.12

Dam of Sire:

MD 752/16 Tw 0.32332

Dam of Dam:

MD 403/14 Tw 0.2322221

Purchaser: _____ Price: _____

Lot 183

MERRYDOWNS SD 4/22 TW

EBV	986	2.73	4.48	0.12	19.9
	NZTW	WWTg-BV	LW8gBV	NLBgBV	EMA Actual
RANK	147/480	137/480	171/480	134/480	72/212
EMA/LW Ratio					0.343

Sire of Sire:

WD 760/17 TW

Sire of Dam:

MD 618/16 Tw

Sire:

MD 67/19 Tw

Dam:

MD 332/20 Tw 0.2

Dam of Sire:

MD 830/17 Tw 0.2212

Dam of Dam:

MD 320/17 Tw 0.222

Purchaser: _____ Price: _____



Lot 184

MERRYVALE 76/22 TW

EBV	1996	3.48	6.29	0.11
	MW+M+W	WWTgBV	LW8gBV	NLBgBV
RANK	13/109	9/109	14/109	66/109

NZWTA Wool Testing Results	Wool Actual (Kgs)	MFD	CofV	Curv
	4.3	44.9	76.1	17

Sire of Sire:
WIM 1166/15

Sire of Dam:
MD 1292/14 Tw

Sire:
MD 1529/19 Tw

Dam:
MV 3/18 Tw 0.212

Dam of Sire:
MD 1351/17 Tw 0.22

Dam of Dam:
MV 6/15 Tw 0.22221

Purchaser: _____ **Price:** _____

Lot 185	MERRYDOWNS 1994/22 TW			
----------------	-----------------------	--	--	--

EBV	2583	2.67	4.23	0.1
	MW+M+W	WWTgBV	LW8gBV	NLBgBV
RANK	11/643	123/643	302/643	554/643

NZWTA Wool Testing Results	Wool Actual (Kgs)	MFD	CofV	Curv
	4.5	36.4	62.5	20.7

Sire of Sire:
WIM 1166/15

Sire:
MD 1529/19 Tw

Dam of Sire:
MD 1351/17 Tw 0.22

Purchaser: _____ Price: _____

Sire of Dam:
FAR 40/16 Tw

Dam:
MD 2025/18 Tw 0.122

Dam of Dam:
MD 1540/15 0.12

Lot 186	MERRYDOWNS 2063/22 TW			
----------------	-----------------------	--	--	--

EBV	1760	1.72	3.04	0.24
	MW+M+W	WWTgBV	LW8gBV	NLBgBV
RANK	198/643	383/643	484/643	113/643

NZWTA Wool Testing Results	Wool Actual (Kgs)	MFD	CofV	Curv
	4.2	40.4	66	17.5

Sire of Sire:
W 442/13 Tw

Sire:
MD 1149/18 Tw

Dam of Sire:
MD 1416/16 0.22222

Purchaser: _____ Price: _____

Sire of Dam:
HE 321/17 Tw

Dam:
MD 2074/19 0.22

Dam of Dam:
MD 834/15 Tw 0.121

Lot 187

MERRYVALE 37/22 TW

EBV	1284	2.47	5.42	0.15
	MW+M+W	WWTgBV	LW8gBV	NLBgBV
RANK	54/109	23/109	22/109	51/109

NZWTA Wool Testing Results	Wool Actual (Kgs)	MFD	CofV	Curv
	4	41.7	32.8	20.4

Sire of Sire:

MA 406/17 Tw

Sire of Dam:

MD 1043/16 Tw

Sire:

MA 815/19 Tw

Dam:

MV 174/20 Tw 0.2

Dam of Sire:

MA 83/13 Tw 0.12222

Dam of Dam:

WD 82/17 Tw 0.222

Purchaser: _____ Price: _____

Lot 188

MERRYDOWNS 2052/22 TW

EBV	1944	1.62	3.87	0.21
	MW+M+W	WWTgBV	LW8gBV	NLBgBV
RANK	136/643	406/643	377/643	205/643

NZWTA Wool Testing Results	Wool Actual (Kgs)	MFD	CofV	Curv
	3.8	40.6	49	21.9

Sire of Sire:

RK 338/17 Tw

Sire of Dam:

MD 1624/17 Tr

Sire:

RK 7/19

Dam:

MD 1670/19 0.22

Dam of Sire:

RK 138/11 Tw 0.122223122

Dam of Dam:

MD 1211/15 Tw 0.12122

Purchaser: _____ Price: _____

Lot 189		MERRYDOWNS 1803/22 TW		
EBV	1756	2.54	4.74	0.21
	MW+M+W	WWTgBV	LW8gBV	NLBgBV
RANK	201/643	150/643	225/643	227/643
NZWTA Wool Testing Results	Wool Actual (Kgs)	MFD	CofV	Curv
	3.8	39.8	34.2	17.8

Sire of Sire:

MD 1043/16 Tw

Sire:

MD 2036/18 Tw

Dam of Sire:

MD 1198/13 Tw 0.2222

Purchaser: _____ Price: _____

Sire of Dam:

WIM 1166/15

Dam:

MD 2078/19 Tw 0.22

Dam of Dam:

MD 1267/16 Tw 0.222

Lot 190		MERRYDOWNS 1239/22 TW		
EBV	1388	2.48	5.26	0.23
	MW+M+W	WWTgBV	LW8gBV	NLBgBV
RANK	354/643	161/643	163/643	145/643
NZWTA Wool Testing Results	Wool Actual (Kgs)	MFD	CofV	Curv
	4	42.3	76.4	18.6

Sire of Sire:

MA 94/16 Tw

Sire:

MA 110/19 Tw

Dam of Sire:

MA 479/14 Tw 0.12122

Purchaser: _____ Price: _____

Sire of Dam:

MD 1585/18 Tw

Dam:

MD 2212/20 Tw 0.2

Dam of Dam:

MD 1235/16 Tw 0.12222

Lot 191

MERRYVALE 139/22 TW

EBV	1674	2.27	4.9	0.21
	MW+M+W	WWTgBV	LW8gBV	NLBgBV
RANK	29/109	30/109	30/109	28/109

NZWTA Wool Testing Results	Wool Actual (Kgs)	MFD	CofV	Curv
	3.4	39.5	54.6	18.6

Sire of Sire:

MD 902/16 Tw

Sire of Dam:

MD 1465/16

Sire:

MD 1585/18 Tw

Dam:

MV 131/19 Tw 0.22

Dam of Sire:

MD 1147/16 Tw 0.2

Dam of Dam:

WD 172/17 Tw 0.2223

Purchaser: _____ Price: _____

Lot 192

MERRYDOWNS 2796/22 TW

EBV	1881	2.15	4.52	0.25
	MW+M+W	WWTgBV	LW8gBV	NLBgBV
RANK	156/643	254/643	261/643	97/643

NZWTA Wool Testing Results	Wool Actual (Kgs)	MFD	CofV	Curv
	3.8	44.9	70.1	19.4

Sire of Sire:

MD 1585/18 Tw

Sire of Dam:

MD 1465/16

Sire:

MV 103/20 Tw

Dam:

MD 1442/19 Tw ..2

Dam of Sire:

WD 178/17 Tw 0.2232

Dam of Dam:

MD 2159/15 Tw 0.2222

Purchaser: _____ Price: _____

Lot 193	MERRYDOWNS 1996/22 TW			
----------------	-----------------------	--	--	--

EBV	1943	3.57	5.29	0.12
	MW+M+W	WWTgBV	LW8gBV	NLBgBV
RANK	137/643	34/643	159/643	500/643

NZWTA Wool Testing Results	Wool Actual (Kgs)	MFD	CofV	Curv
	3.9	41.1	45.3	23

Sire of Sire:
RK 338/17 Tw

Sire of Dam:
MD 2273/15

Sire:
RK 7/19

Dam:
MD 1667/19 Tw 0.22

Dam of Sire:
RK 138/11 Tw 0.122223122

Dam of Dam:
MD 1382/16 Tw 0.222

Purchaser: _____ Price: _____

Lot 194	MERRYDOWNS 1829/22 TW			
----------------	-----------------------	--	--	--

EBV	2475	2.61	5.14	0.2
	MW+M+W	WWTgBV	LW8gBV	NLBgBV
RANK	23/643	139/643	177/643	257/643

NZWTA Wool Testing Results	Wool Actual (Kgs)	MFD	CofV	Curv
	4.7	36.3	46.7	20.8

Sire of Sire:
MD 1585/18 Tw

Sire of Dam:
FAR 40/16 Tw

Sire:
MD 2434/20 Tr

Dam:
MD 1227/18 Tw 0.212

Dam of Sire:
MD 1871/17 0.1333

Dam of Dam:
MD 1663/15 Tw 0.222

Purchaser: _____ Price: _____

Lot 195

MERRYDOWNS 2191/22 TW

EBV	2386	1.66	4.9	0.31
	MW+M+W	WWTgBV	LW8gBV	NLBgBV
RANK	37/643	401/643	202/643	5/643

NZWTA Wool Testing Results	Wool Actual (Kgs)	MFD	CofV	Curv
	4.8	43.6	57.2	21.3

Sire of Sire:

MD 1624/17 Tr

Sire of Dam:

FAR 40/16 Tw

Sire:

MD 1888/19 Tw

Dam:

MD 1382/18 Qd 0.232

Dam of Sire:

MD 951/16 Tw 0.222

Dam of Dam:

MD 2307/13 Tw 0.2224

Purchaser: _____ Price: _____

Lot 196

MERRYDOWNS 2089/22 TW

EBV	1916	2.26	4.02	0.19
	MW+M+W	WWTgBV	LW8gBV	NLBgBV
RANK	142/643	222/643	345/643	299/643

NZWTA Wool Testing Results	Wool Actual (Kgs)	MFD	CofV	Curv
	3.5	40	66.3	16.9

Sire of Sire:

RK 338/17 Tw

Sire of Dam:

MD 1465/16

Sire:

RK 7/19

Dam:

MD 1498/19 Tw 0.22

Dam of Sire:

RK 138/11 Tw 0.122223122

Dam of Dam:

MD 1050/15 0.22222

Purchaser: _____ Price: _____

Lot 197		MERRYVALE 83/22 TW		
EBV	2294	2.43	5.13	0.28
	MW+M+W	WWTgBV	LW8gBV	NLBgBV
RANK	6/109	24/109	26/109	6/109
NZWTA Wool Testing Results	Wool Actual (Kgs)	MFD	CofV	Curv
	3.9	38.3	58.1	20.7

Sire of Sire:

MD 1624/17 Tr

Sire:

MD 1888/19 Tw

Dam of Sire:

MD 951/16 Tw 0.222

Purchaser: _____ Price: _____

Sire of Dam:

MD 1043/16 Tw

Dam:

MV 56/19 Tw 0.32

Dam of Dam:

WD 19/17 0.2

Lot 198		MERRYDOWNS 1898/22 TW		
EBV	1674	3.03	5.11	0.17
	MW+M+W	WWTgBV	LW8gBV	NLBgBV
RANK	230/643	82/643	181/643	367/643
NZWTA Wool Testing Results	Wool Actual (Kgs)	MFD	CofV	Curv
	3.7	39.4	55	19.9

Sire of Sire:

MD 1043/16 Tw

Sire:

MV 75/20 Tr

Dam of Sire:

WD 62/17 Tw 0.231

Purchaser: _____ Price: _____

Sire of Dam:

HE 321/17 Tw

Dam:

MD 1905/19 Tw 0.12

Dam of Dam:

MD 1366/16 Tw 0.22222

Lot 199

MERRYDOWNS 2128/22 TW

EBV	2042	1.81	4.09	0.31
	MW+M+W	WWTgBV	LW8gBV	NLBgBV
RANK	108/643	357/643	328/643	8/643

NZWTA Wool Testing Results	Wool Actual (Kgs)	MFD	CofV	Curv
	3.5	41.5	64.2	17.6

Sire of Sire:

MD 1585/18 Tw

Sire:

MV 103/20 Tw

Dam of Sire:

WD 178/17 Tw 0.2232

Purchaser: _____ Price: _____

Sire of Dam:

MD 1624/17 Tr

Dam:

MD 1677/19 Tw 0.22

Dam of Dam:

MD 936/16 Tw 0.22

Lot 200

MERRYDOWNS 2178/22 TW

EBV	1839	2.11	4.08	0.27
	MW+M+W	WWTgBV	LW8gBV	NLBgBV
RANK	171/643	266/643	331/643	64/643

NZWTA Wool Testing Results	Wool Actual (Kgs)	MFD	CofV	Curv
	3.2	41.7	48.7	19.5

Sire of Sire:

MD 1585/18 Tw

Sire:

MV 103/20 Tw

Dam of Sire:

WD 178/17 Tw 0.2232

Purchaser: _____ Price: _____

Sire of Dam:

MD 1624/17 Tr

Dam:

MD 1908/19 Tw 0.22

Dam of Dam:

MD 1879/16 Tr 0.22122

Lot 201	MERRYDOWNS 1820/22			
----------------	--------------------	--	--	--

EBV	2092	2.89	5.28	0.19
	MW+M+W	WWTgBV	LW8gBV	NLBgBV
RANK	99/643	97/643	161/643	309/643

NZWTA Wool Testing Results	Wool Actual (Kgs)	MFD	CofV	Curv
	5.1	42.3	41.5	18.6

Sire of Sire:
MD 1585/18 Tw

Sire:
MD 2434/20 Tr

Dam of Sire:
MD 1871/17 0.1333

Purchaser: _____ Price: _____

Sire of Dam:
MD 1292/14 Tw

Dam:
MD 2373/18 Tw 0.221

Dam of Dam:
MD 1401/16 Tw 0.22113

Lot 202	MERRYDOWNS 1695/22			
----------------	--------------------	--	--	--

EBV	1792	2.2	4.28	0.15
	MW+M+W	WWTgBV	LW8gBV	NLBgBV
RANK	188/643	239/643	295/643	419/643

NZWTA Wool Testing Results	Wool Actual (Kgs)	MFD	CofV	Curv
	4	37.4	50.5	17.3

Sire of Sire:
MD 1043/16 Tw

Sire:
MD 2036/18 Tw

Dam of Sire:
MD 1198/13 Tw 0.2222

Purchaser: _____ Price: _____

Sire of Dam:
FAR 40/16 Tw

Dam:
MD 1557/19 Tr 0.21

Dam of Dam:
MD 1373/13 Tw 0.212133

Lot 203

MERRYDOWNS 1774/22

EBV	1896	5.21	8.78	0.11
	MW+M+W	WWTgBV	LW8gBV	NLBgBV
RANK	150/643	2/643	7/643	521/643

NZWTA Wool Testing Results	Wool Actual (Kgs)	MFD	CofV	Curv
	3.9	35.3	47	16.8

Sire of Sire:
MD 1043/16 Tw

Sire:
MV 75/20 Tr

Dam of Sire:
WD 62/17 Tw 0.231

Purchaser: _____ Price: _____

Sire of Dam:
MD 2273/15

Dam:
MD 1091/18 0.221

Dam of Dam:
MD 1753/16 Tw 0.1

Lot 204

MERRYDOWNS 1963/22 TR

EBV	2386	3.8	6.65	0.21
	MW+M+W	WWTgBV	LW8gBV	NLBgBV
RANK	38/643	22/643	57/643	218/643

NZWTA Wool Testing Results	Wool Actual (Kgs)	MFD	CofV	Curv
	4	48	81.6	20.1

Sire of Sire:
RK 338/17 Tw

Sire:
RK 7/19

Dam of Sire:
RK 138/11 Tw 0.122223122

Purchaser: _____ Price: _____

Sire of Dam:
MD 954/16 Tw

Dam:
MD 1102/19 Tw 0.33

Dam of Dam:
MD 1477/15 Tw 0.122

Lot 205

MERRYDOWNS 2239/22 TW

EBV	1560	2.4	4.84	0.18
	MW+M+W	WWTgBV	LW8gBV	NLBgBV
RANK	282/643	176/643	210/643	334/643
NZWTA Wool Testing Results	Wool Actual (Kgs)	MFD	CofV	Curv
	4.1	38	59.5	20.8

Sire of Sire:

W 442/13 Tw

Sire:

MD 1149/18 Tw

Dam of Sire:

MD 1416/16 0.22222

Sire of Dam:

HE 321/17 Tw

Dam:

MD 2102/19 Tw 0.12

Dam of Dam:

MD 1182/14 Tw 0.1222

Purchaser: _____ Price: _____

Notes

A series of horizontal dotted lines for writing notes.

Notes

A series of horizontal dotted lines for writing notes.

Notes

A series of horizontal dotted lines for writing notes.

Buyers Instruction Slip (No verbal instructions will be accepted)

Name:

Phone/Fax: Cellphone:

Address:

Lots Purchased: Total No:

Account to:

Transfers:

Insure for: Months:

Signature of buyer:

In the event of the above mentioned being unwilling to make settlement on my behalf, I agree to do so personally in full within fourteen (14) days from the date of sale.

Signature:

PGG Wrightson Genetics

PGG Wrightson Genetics, making ram sales 'too easy!'

WE'RE STRAIGHT UP, SAVING YOU TIME.



scan me for
ram sales

Contact your local livestock representative.

Callum McDonald
Livestock Genetics
Representative
027 433 6443

Paul Pearce
Sheep & Beef Representative
027 478 5761

Andrew Martin
Regional Livestock Manager
027 441 6431

John McKone
Livestock Genetics Auctioneer
027 229 9375

Ben McKerchar
Sheep & Beef Representative
027 366 7766

pggwrightson.co.nz/ram-sales



fb.com/pgwgenetics
instagram.com/pgwgenetics

bidr
NZ's Virtual Saleyard

Rural insurance - your way.
call 0800 10 22 76

PGG Wrightson

BrokerWeb
RISK SERVICES
Your Insurance Partner



*Thank you for your attendance.
We wish the purchasers every success. We know the
ram/s you have purchased will shift and perform well.
All are invited for refreshments after the sale.*

Blair and Sally Robertson



Merrydowns
Romney and Southdown Stud